



Washington County

M A R Y L A N D

PURCHASING DEPARTMENT
DIVISION OF BUDGET & FINANCE

PUR-1576

ADDENDUM NO. 1
INVITATION TO BID

BLACK ROCK CLUBHOUSE ROOF REPLACEMENT

DATE: Friday, December 2, 2022

BIDS DUE: Wednesday, December 7, 2022
2:00 P.M.(EDT/EST)

To Bidders:

This Addendum is hereby made a part of the Contract Documents on which all bids will be based and is issued to correct and clarify the original documents.

Please acknowledge receipt of this Addendum at the appropriate space on the Proposal Form. This Addendum consists of three (3) pages and two (2) attachments.

NOTE: All Bidders must enter the Washington County Administration Complex through either the front door at the 100 West Washington Street entrance or through the rear entrance (w/blue canopy roof) which is handicap accessible and must use the elevator to access the Purchasing Department to submit their bid and/or to attend the Pre-Bid Conference. Alternate routes are controlled by a door access system. The general public will be subject to wand search and will be required to remove any unauthorized items from the building prior to entry. Prohibited items include but are not limited to: Weapons of any type; Firearms, ammunition and explosive devices; Cutting instruments of any type - including knives, scissors, box cutters, work tools, knitting needles, or anything with a cutting edge, etc.; Pepper spray, mace or any other chemical defense sprays; and Illegal substances.

ITEM NO. 1: Inquiry: Soffit replacement is not in the specification for the shingle roofing requirements but is in the metal roofing requirements. Is soffit replacement part of the work for the shingle roofing replacement?

Response: Yes, soffit replacement is required for both the metal and the shingle roofing option.

ITEM NO. 2: Inquiry: Will the ceiling of the left side porch require new soffit as well. (See Porch ceiling photo attached)

Response: No, we did not detail a new soffit for this area. See Attachment "A" to this addendum.

ITEM NO. 3: Inquiry: Part 3 Execution 3.3 A-#6. "In lieu of normal underlayment, provide a self-adhering polymer modified bitumen sheet". Is the entire roof deck to be covered in Ice & Water shield?

Response: Refer to the bid document, Page 26, Scope of Work/Specifications, Section 07411, Metal Roofing Panels, Item No. 2.2, Underlayment Materials. The metal roofing requires a high temperature underlayment under the entire roof as specified in above referenced section. The shingle roof system requires Ice and Water Shield along eaves, ridges, and valleys. The Ice and Water Shield shall extend up the roof 24" minimum from the warm side of the exterior walls.

ITEM NO. 4: Inquiry: Part 2 Products 2.3 Accessories F: "Gutters and Downspouts: Alcoa 6" aluminum OG gutter.032 gage with 3"x 4" .027 gage downspout" This material is different than the gutters and downspouts listed in the metal roofing section. (2.7 Accessories D). Are we to bid the gutters for shingle roofing with .032 aluminum and the gutters for the metal roofing with 24ga metallic coated steel? OR should the gutters and downspouts be the same material for both? If so which material?

Response: Each roofing system specifications have different materials for the accessories. Aluminum Gutters and Downspouts can be used on either system.

ITEM NO. 5: Inquiry: It was mentioned during the pre-bid meeting that the existing curbs are to remain and be flashed. The plans and specifications call for installation of new curbs. Are new curbs required as part of the bid?

Response: If the existing roof curbs are in satisfactory condition and will maintain a new roof warranty they may be re-used if acceptable by Washington County.

ITEM NO. 6: Inquiry: Plan Sheet A-5.1 and A 5.2 detail B Rake Detail on both sheets call for metal fascia or trim. There is no specification as to what metal is to be used in these areas, please clarify the metal to be used as rake and fascia trim.

Response: Rake and fascia trim shall be .032 Aluminum pre-finished material.

ITEM NO. 7: Inquiry: Will Englert A1500 snap lock architectural metal roofing system be

(NOTE: The wording of all "inquiries" submitted are displayed exactly as received.)

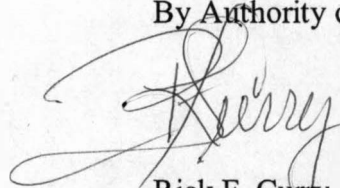
considered as an alternate. (See Attached spec sheet for the Englert A1500 Metal roofing system)

Response: Alternative Systems will be acceptable when meeting the minimum attributes of the specifications and when acceptable by Washington County. See attachment B of this addendum.

ITEM NO. 8: Inquiry: Are snow guards required for the standing seam metal roofing installation?

Response: Provide snow rails as shown on drawing A1.2, detail 6/A1.2 and on plan view with No. 4 key item.

By Authority of:

A handwritten signature in black ink, appearing to read "Rick F. Curry", is written over a faint circular stamp.

Rick F. Curry, CPPO
Director of Purchasing

(NOTE: The wording of all "inquiries" submitted are displayed exactly as received.)





SERIES 1500 PANEL SYSTEM



ARCHITECTURAL SYSTEM FOR LIGHT COMMERCIAL AND INSTITUTIONAL

1-1/2" ARCHITECTURAL SNAP-LOCK PANEL SYSTEM

The Englert Series 1500 integral snap lock panel system combines architectural versatility – with cleanly detailed, continuous seam transitions from roof to mansard, fascia, wall panel or soffit. The panel system consists of an integral narrow batten cap seam that snaps over a rigid, continuous interlocking leg, creating a rugged yet aesthetically pleasing architectural roof panel system.

SYSTEM APPLICATIONS

- Medium duty for residential, light commercial and industrial use
- 3"/12" minimum slope requirement
- "Site specific" engineering available for various panel sizes and substrates upon request

SUBSTRATES

- 26, 24, and 22 gauge steel
- .032" and .040" aluminum



1-800-ENGLERT

WWW.ENGLERTINC.COM

FINISHES

The Englert Series 1500 system is available in a wide variety of coatings and colors. See the Englert color card for our full range of standard, full strength Kynar, low-gloss/ULTRA-Cool™ colors and paint system specifications.

Englert can match the color of virtually any material – including brick, wood and fabric. Custom colors are available in quantities as low as 5,000 lbs. in both steel and aluminum.

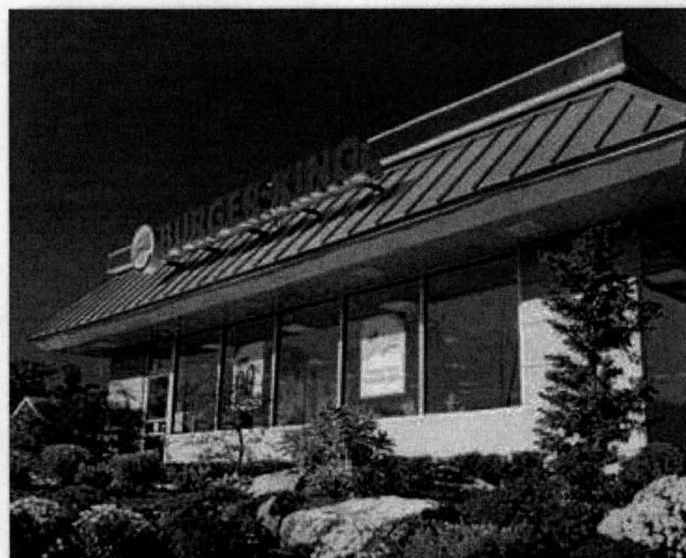
SYSTEM WARRANTIES

- Galvalume Plus® – 25 year steel warranty on acrylic coated Galvalume®
- Perma-color 3500 – 35 year steel or aluminum warranty on ULTRA-Cool™/low-gloss Kynar 500® coatings
- Perma-Metallic 2000 – 20 year steel or aluminum warranty on Kynar 500® coating
- 5, 10, 15 and 20 year weathertightness warranties are available

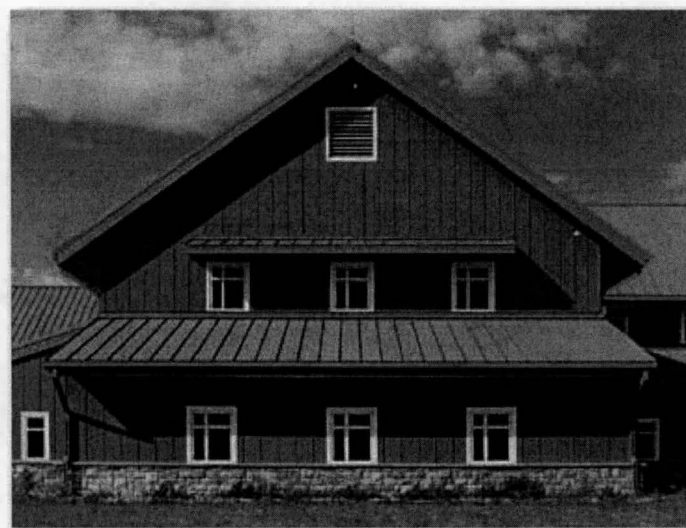
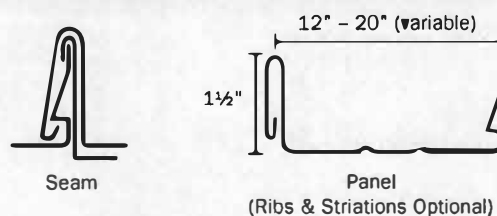
RATINGS AND CERTIFICATIONS

- UL-90 rated over 1/2" plywood at 15.25" wide with clips at 36" o.c. (24 ga. steel)
- ASTM E-1646 water penetration tested
- ASTM E-1680 air infiltration tested
- ASTM E-84 Class A fire rating on coating and substrate (24 ga. steel)
- Florida Building Code product approval listed
- Metro-Dade County certified

Distributed by:



Series 1500 1-1/2" Integral Snap-Lock



Kynar 500® is a registered trademark of Atochem, N.A.
Galvalume® and Galvalume Plus® are registered trademarks of BIEC International, Inc.
ULTRA-Cool™ is a trademark of BASF.

Copyright ©2011 Englert Inc. All rights reserved.

90111E