

H INTERIOR ELEVATION H  
1/4" = 1'-0"

PROFESSIONAL CERTIFICATION:  
I CERTIFY THAT THESE  
DOCUMENTS WERE PREPARED  
BY OR APPROVED BY ME AND  
THAT I AM A DULY LICENSED  
ARCHITECT UNDER THE LAWS  
OF THE STATE OF MARYLAND.  
LICENSE NO. 8490  
EXPIRATION DATE: 3/4/2021



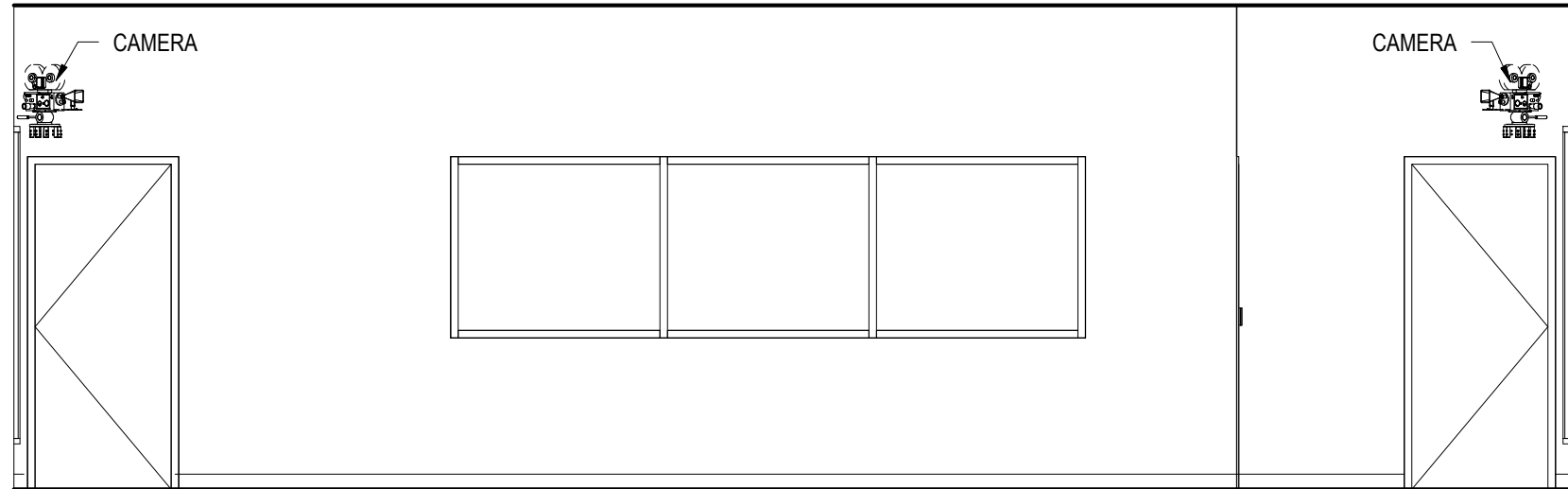
ALL REPORTS, PLANS, SPECIFICATIONS AND COMPUTER FILES RELATING TO THIS PROJECT ARE THE PROPERTY OF CRABTREE, ROHRBAUGH & ASSOCIATES. CRABTREE ROHRBAUGH & ASSOCIATES RETAINS ALL COMMON LAW, STATUTE AND OTHER RESERVED RIGHTS INCLUDING THE COPYRIGHT THEREIN. REPRODUCTION OF THE MATERIAL HEREIN OR SUBSTANTIAL USE WITHOUT WRITTEN PERMISSION OF CRABTREE, ROHRBAUGH & ASSOCIATES VIOLATES THE COPYRIGHT LAWS OF THE UNITED STATES AND WILL BE SUBJECT TO LEGAL PROSECUTION.  
© CRABTREE, ROHRBAUGH & ASSOCIATES, INC. 2019

## REVISIONS

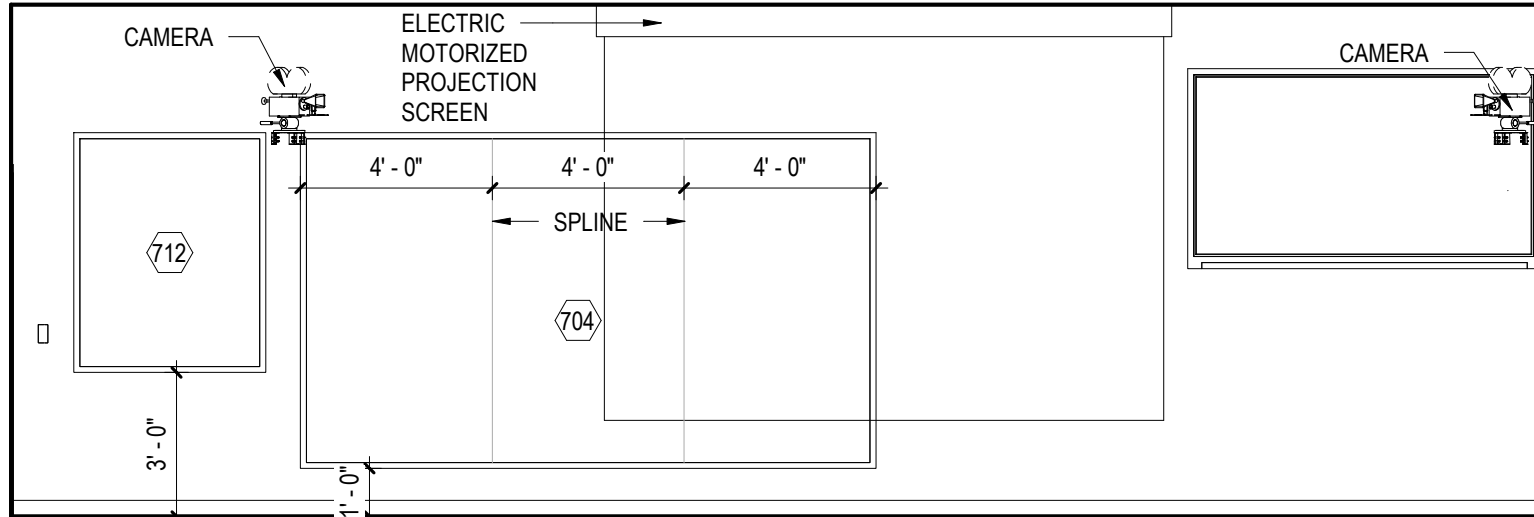
NO.	MM-DD-YR	NAME	DESCRIPTION OF CHANGES
4	10/12/2020		ADDENDUM #4

1 B106 & B109 SMALL CLASSROOMS  
1/4" = 1'-0"

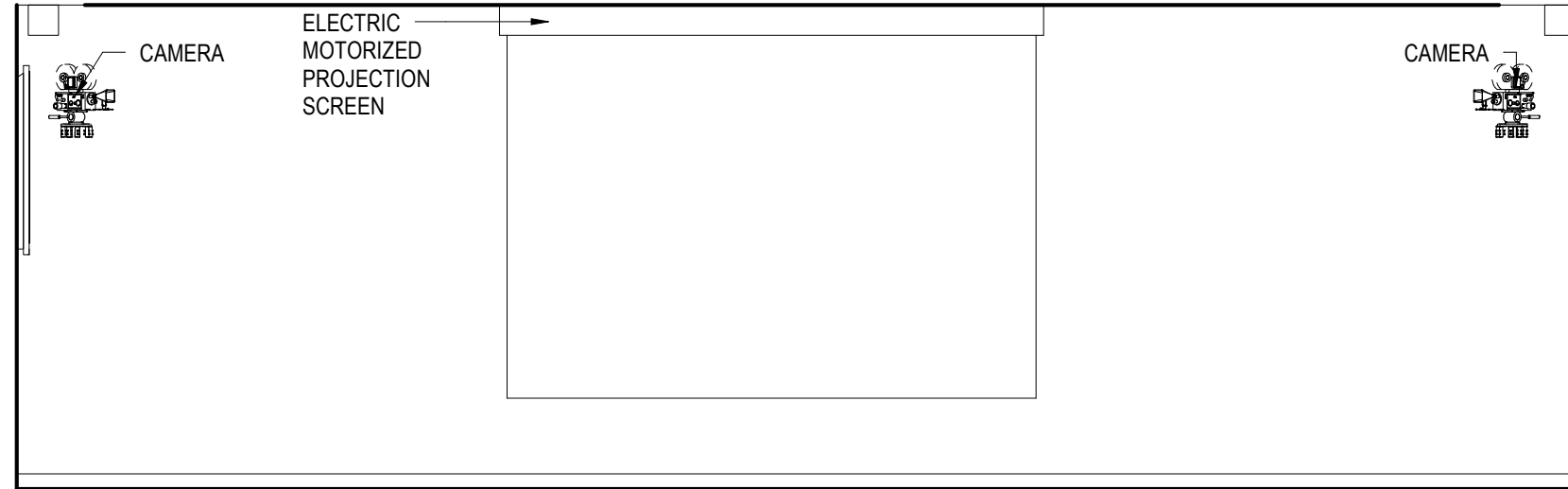
\* LAYOUT SHALL BE APPLIED TO THE FOLLOWING ROOMS: B106, B109, B118 AND B119



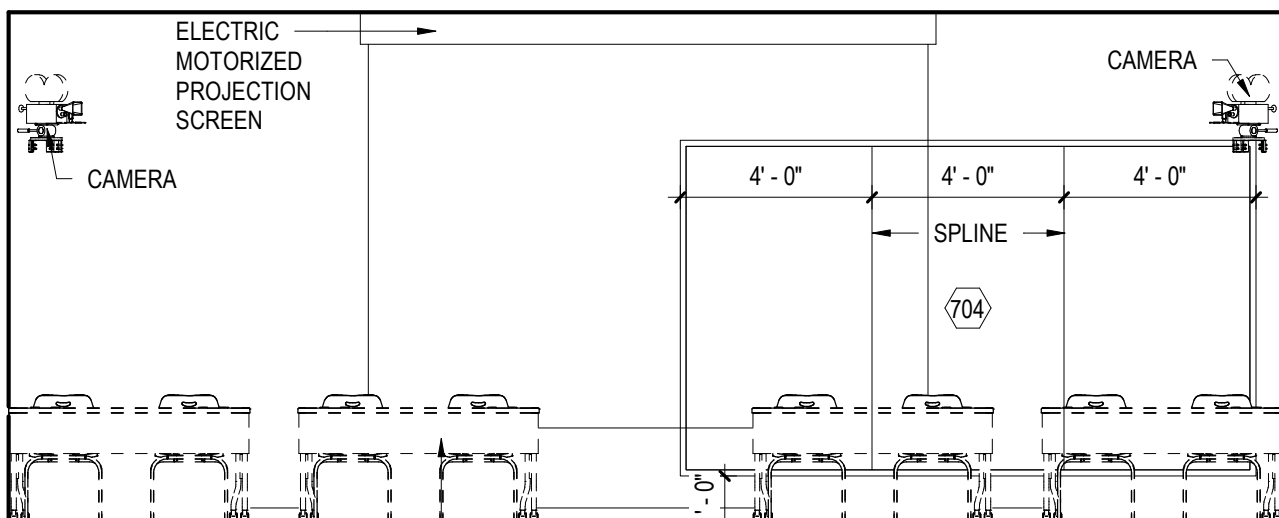
A INTERIOR ELEVATION A  
1/4" = 1'-0"



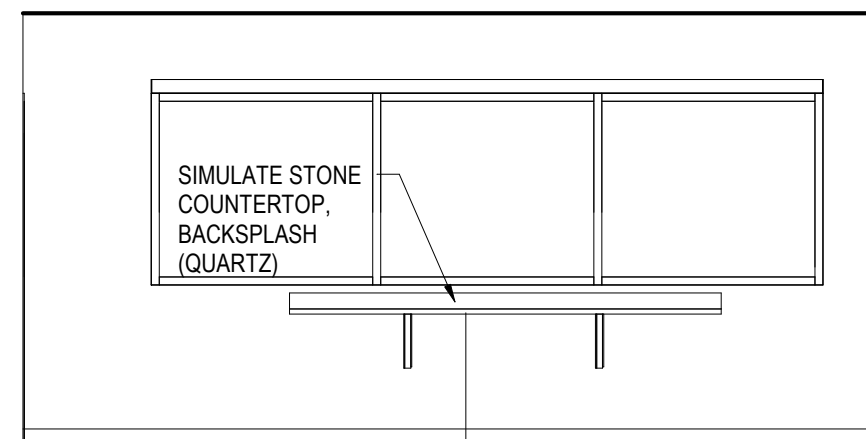
B INTERIOR ELEVATION B  
1/4" = 1'-0"



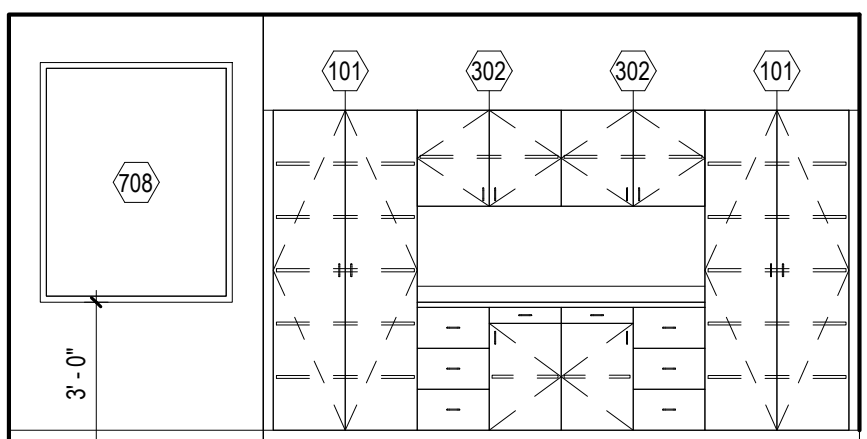
C INTERIOR ELEVATION C  
1/4" = 1'-0"



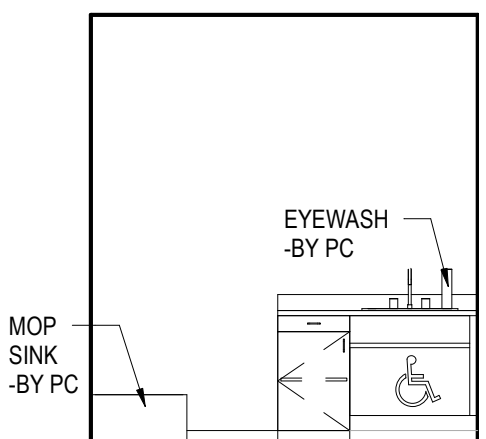
D INTERIOR ELEVATION D  
1/4" = 1'-0"



E INTERIOR ELEVATION E  
1/4" = 1'-0"



F INTERIOR ELEVATION F  
1/4" = 1'-0"



G INTERIOR ELEVATION G  
1/4" = 1'-0"

### GENERAL NOTE IN REFERENCE TO I4.1

1. COORDINATE WITH AUDIO/ VIDEO (TA SERIES) CONSTRUCTION DOCUMENTS FOR ALL MOUNTING HEIGHTS, EQUIPMENT SIZES AND APPROVED LOCATIONS.

### MOUNTING HEIGHT SCHEDULE

MARKER BOARD	3'-0" AFF TO BOTTOM EDGE
TACK BOARD	3'-0" AFF TO BOTTOM EDGE
BASE CABINETS	3'-0" AFF TO TOP OF CABINET
WALL CABINETS	7'-0" AFF TO TOP OF CABINET
PROJECTION SCREEN	MOUNTED DIRECTLY BELOW CEILING
SHORT THROW-WALL MTD	CENTERED ON MARKER BOARD
LCD TV-WALL MTD	VERIFY MOUNTING HEIGHT W/ OWNER
CAMERA	VERIFY MOUNTING HEIGHT W/ OWNER

### GENERAL NOTES TO APPLY TO ALL I4 DRAWINGS

1. MOUNTING HEIGHT SCHEDULE IS APPLICABLE TO MOST ROOMS. IN INSTANCE WHERE NOTE/DETAILS ON DRAWINGS DO NOT COINCIDE WITH THE SCHEDULE. THE DRAWINGS TAKE PRECEDENCE.
2. ALL BASE CABINETS SHALL RECEIVE A CONTINUOUS 1-1/4" THICK LAMINATE COUNTERTOP WITH A 4"H BACKSPLASH UNLESS NOTED OTHERWISE. THE DEPTH OF THE COUNTERTOP SHALL EXTEND 3/4" PAST THE DEPTH OF THE BASE CABINET.
3. COUNTERTOPS THAT RETURN INTO A WALL(S) SHALL RECEIVE BACKSPLASH THAT WRAPS CORNER ALONG WALL(S).
4. PROVIDE CHAMFERED EDGE CORNER FOR ALL COUNTERTOPS ADJACENT TO ALL TALL STORAGE UNITS.
5. WHERE COLUMNS, WINDOWS OR OTHER BUILDING COMPONENTS CONFLICT WITH CASEWORK DIMENSIONAL REQUIREMENTS. FIELD VERIFY DIMENSIONS AND PROVIDE CUSTOM UNIT TO ALLOW PROPER FITTING.
6. ALL EXPOSED ENDS OF CASEWORK SHALL RECEIVE FINISHED END PANELS.
7. LAMINATE COLOR FOR INTERIOR OF OPEN CABINETS SHALL MATCH EXTERIOR LAMINATE COLOR.
8. STAINLESS STEEL SINKS, FAUCETS, AND BUBBLERS SHALL BE PROVIDED AND INSTALLED BY PLUMBING CONTRACTOR.
9. ALL VISUAL DISPLAY AREAS (MARKER BOARDS AND/OR TACK BOARDS) 10'-0"W OR LONGER SHALL RECEIVE 2"H MAP RAIL THAT SPANS FROM VERTICAL EDGE TO VERTICAL EDGE.
10. PROVIDE WOOD BLOCKING IN METAL STUD WALLS, PER MANUFACTURER'S RECOMMENDATIONS, TO RECEIVE THE TELEVISION WALL BRACKET.
11. IN ROOMS RECEIVING RESILIENT BASE, ADHERE TO ALL WALLS, BASE CABINET TOE KICKS, AND EXPOSED END PANELS. REFER TO SPECIFICATIONS FOR LOCATION OF 4" AND 6" BASE.
12. SEE REFLECTED CEILING PLANS FOR LOCATION OF WINDOW TREATMENTS.
13. TELEPHONE UNITS AND SYSTEMS ARE NOT IN CONTRACT.
14. COORDINATE ALL LARGE SCALE PLANS WITH MECHANICAL, ELECTRICAL AND PLUMBING DRAWINGS.
15. NIC = NOT IN CONTRACT
16. WHEN DESCRIPTION AND MODEL NUMBER IN CASEWORK AND EQUIPMENT SCHEDULE CONFLICT, THE DESCRIPTION TAKES PRECEDENCE.
17. OPP = OPPOSITE HAND.
18. ALL COUNTERTOPS SHALL BE PLASTIC LAMINATE, U.N.O.

### I4.1 - GENERAL CASEWORK AND EQUIPMENT SCHEDULE

NO	DESCRIPTION	MANUFACTURER	MODEL	DIMENSIONS
101	2-DOOR TALL STORAGE	CASE SYSTEMS	T0100	36"W x 24"D x 84"H
201	ADA VANITY SINK BASE CABINET	CASE SYSTEMS	D1000M	30"W x 24"D x 34"H
206	1-DOOR/1-DRAWER BASE CABINET - LEFT HINGED	CASE SYSTEMS	B3110	18"W x 24"D x 34"H
207	1-DOOR/1-DRAWER BASE CABINET - LEFT HINGED	CASE SYSTEMS	B3110	18"W x 24"D x 36"H
208	1-DOOR/1-DRAWER BASE CABINET - RIGHT HINGED	CASE SYSTEMS	B3120	18"W x 24"D x 36"H
214	3-EQUAL DRAWER BASE CABINET	CASE SYSTEMS	B4030	18"W x 24"D x 36"H
302	2-DOOR WALL CABINET	CASE SYSTEMS	W0100	36"W x 14"D x 24"H
701	MARKERBOARD	SEE SPECIFICATIONS	SEE SPECIFICATIONS	16'-0"W x 5'-0"H
704	MARKERBOARD	SEE SPECIFICATIONS	SEE SPECIFICATIONS	12'-0"W x 7'-0"H
708	MARKERBOARD	SEE SPECIFICATIONS	SEE SPECIFICATIONS	4'-0"W x 5'-0"H
712	TACK BOARD	SEE SPECIFICATIONS	SEE SPECIFICATIONS	4'-0"W x 5'-0"H
800	SINK MOUNTED EYE WASH STATION	SEE SPECIFICATIONS	SEE SPECIFICATIONS	SEE MANUFACTURER



LARGE SCALE LAYOUTS  
SMALL CLASSROOMS

PLOT SCALE:  
1/4" = 1'-0"

FILENAME:

DATE:  
DECEMBER 18, 2019

PROJECT  
3089

I4.1

CRABTREE ROHRBAUGH & ASSOCIATES - ARCHITECTS  
401 EAST WINDING HILL ROAD, MECHANICSBURG PA 17055 717-458-0272 www.cra-architects.com  
BALTIMORE, MARYLAND CHARLOTTESVILLE, VIRGINIA WHITE SULPHUR SPRINGS, WEST VIRGINIA

PROPOSED NEW  
WASHINGTON COUNTY PUBLIC SAFETY TRAINING CENTER  
WASHINGTON COUNTY PROJECT NO. 28-266



PROFESSIONAL CERTIFICATION:  
I CERTIFY THAT THESE  
DOCUMENTS WERE PREPARED  
BY OR APPROVED BY ME AND  
THAT I AM A DULY LICENSED  
ARCHITECT UNDER THE LAWS  
OF THE STATE OF MARYLAND.  
LICENSE NO. 8490  
EXPIRATION DATE: 3/4/2021



ALL REPORTS, PLANS, SPECIFICATIONS AND COMPUTER FILES RELATING TO THIS PROJECT ARE THE PROPERTY OF CRABTREE, ROHRBAUGH & ASSOCIATES. CRABTREE ROHRBAUGH & ASSOCIATES RETAINS ALL COMMON LAW, STATUTE AND OTHER RESERVED RIGHTS INCLUDING THE COPYRIGHT THEREIN. REPRODUCTION OF THE MATERIAL HEREIN OR SUBSTANTIAL USE WITHOUT WRITTEN PERMISSION OF CRABTREE, ROHRBAUGH & ASSOCIATES VIOLATES THE COPYRIGHT LAWS OF THE UNITED STATES AND WILL BE SUBJECT TO LEGAL PROSECUTION.  
© CRABTREE, ROHRBAUGH & ASSOCIATES, INC. 2019

## REVISIONS

MM-DD-YR	NAME	DESCRIPTION OF CHANGES

# CRABTREE ROHRBAUGH & ASSOCIATES - ARCHITECTS

401 EAST WINDING HILL ROAD, MECHANICSBURG PA 17055 717-458-0272 www.cra-architects.com  
BALTIMORE, MARYLAND CHARLOTTESVILLE, VIRGINIA WHITE SULPHUR SPRINGS, WEST VIRGINIA

PROPOSED NEW  
WASHINGTON COUNTY PUBLIC SAFETY TRAINING CENTER  
WASHINGTON COUNTY PROJECT NO. 28-266



LARGE SCALE LAYOUTS  
SMALL CLASSROOM

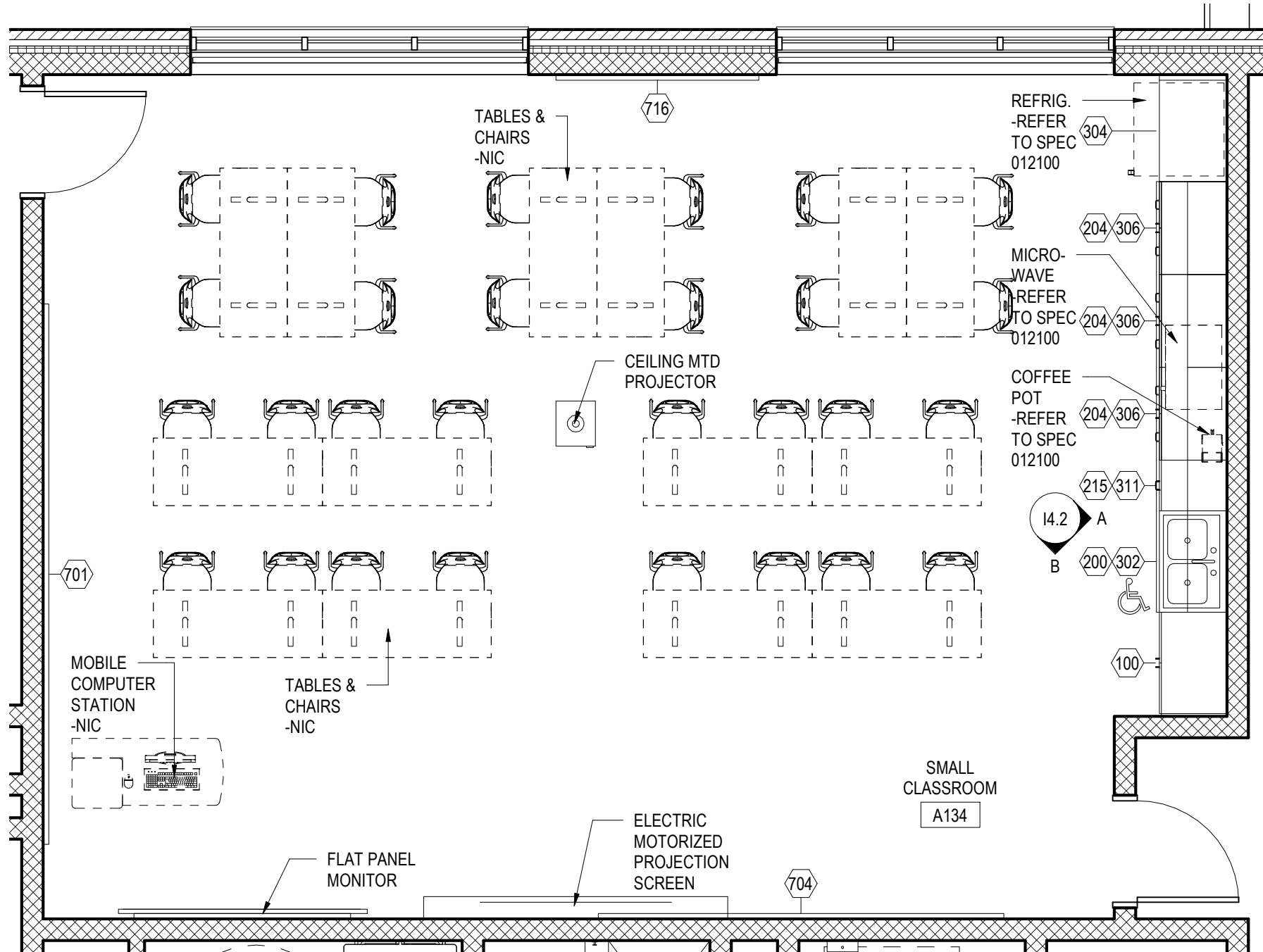
PLOT SCALE:  
1/4" = 1'-0"

FILENAME:

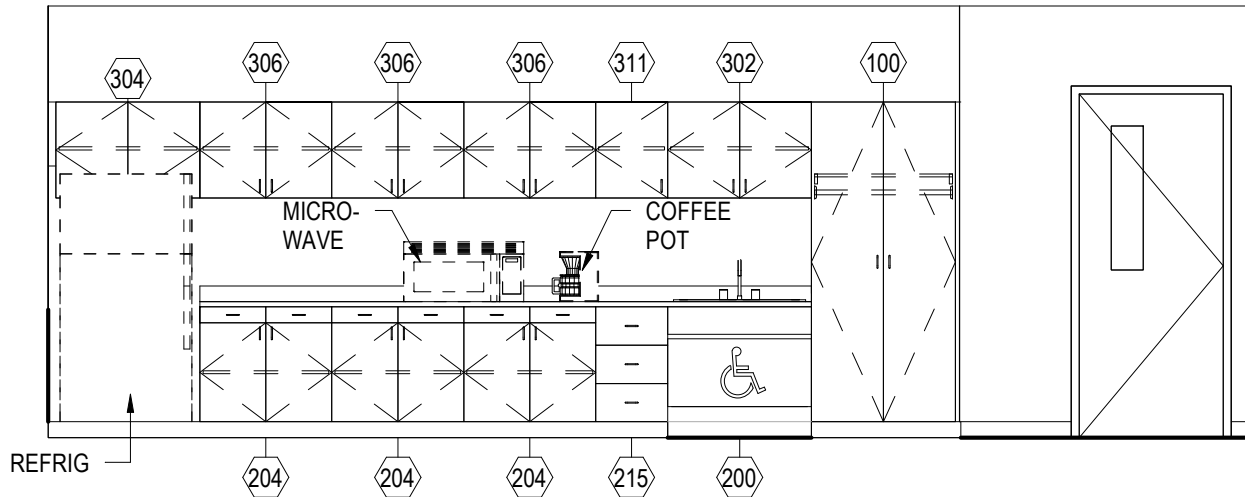
DATE:  
DECEMBER 18, 2019

PROJECT  
3089

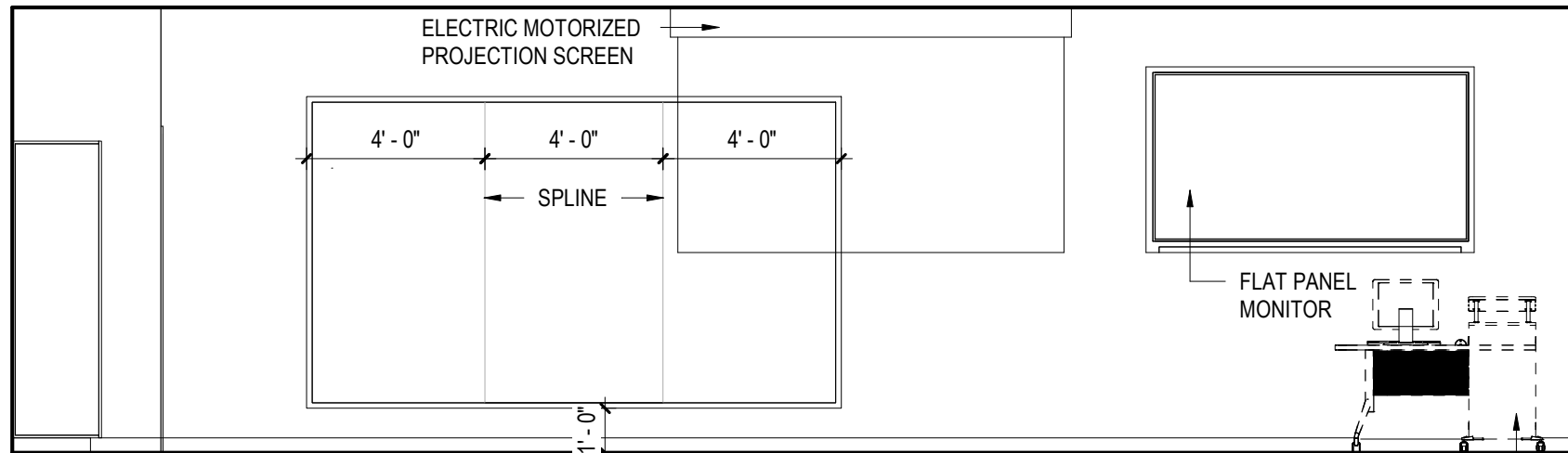
14.2



1 A134 SMALL CLASSROOM  
1/4" = 1'-0"



A INTERIOR ELEVATION A  
1/4" = 1'-0"



B INTERIOR ELEVATION B  
1/4" = 1'-0"

### GENERAL NOTE IN REFERENCE TO I4.2

1. COORDINATE WITH AUDIO/ VIDEO (TA SERIES) CONSTRUCTION DOCUMENTS FOR ALL MOUNTING HEIGHTS, EQUIPMENT SIZES AND APPROVED LOCATIONS.

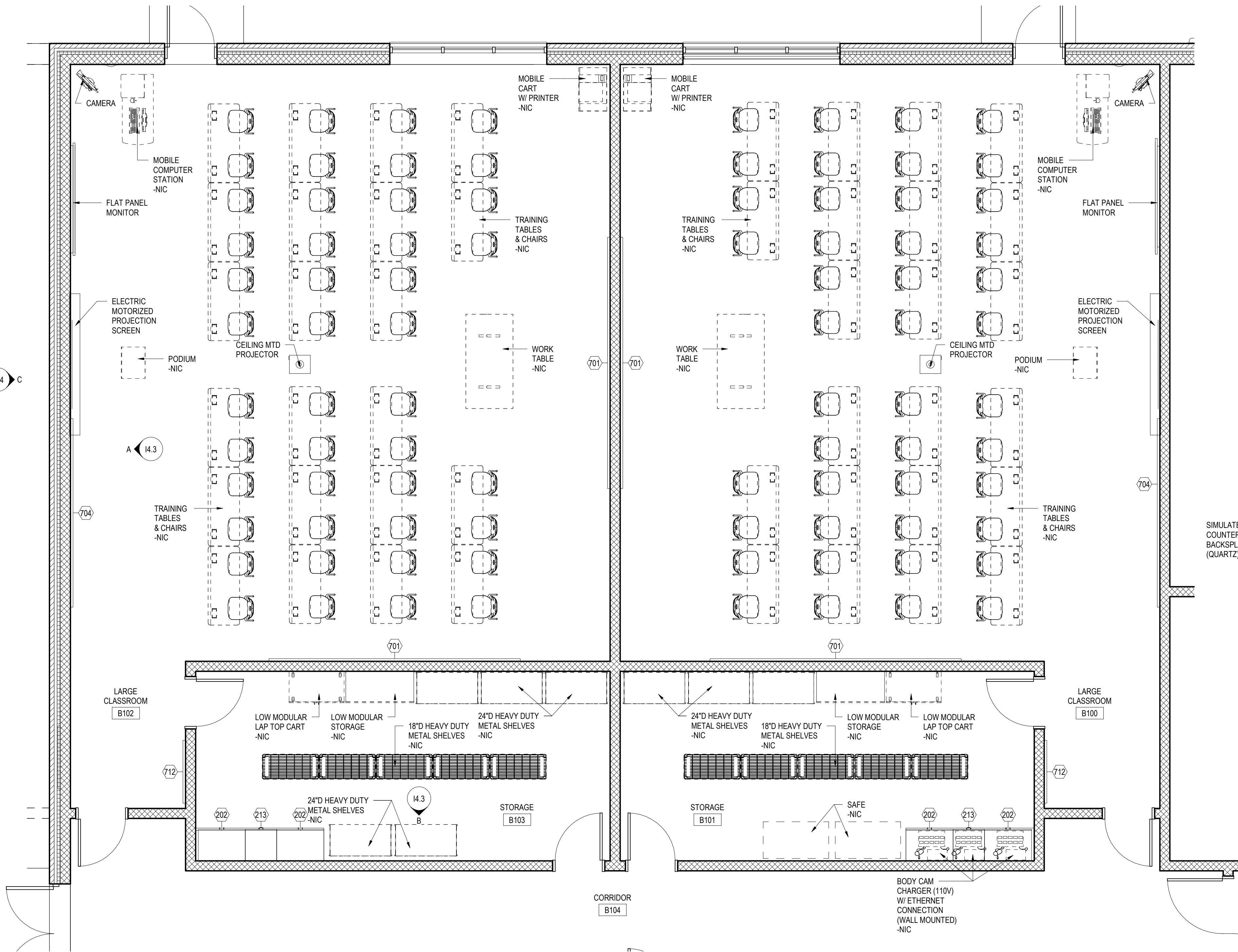
### MOUNTING HEIGHT SCHEDULE

MARKER BOARD	3'-0" AFF TO BOTTOM EDGE
TACK BOARD	3'-0" AFF TO BOTTOM EDGE
BASE CABINETS	3'-0" AFF TO TOP OF CABINET
WALL CABINETS	7'-0" AFF TO TOP OF CABINET
PROJECTION SCREEN	MOUNTED DIRECTLY BELOW CEILING
SHORT THROW-WALL MTD	CENTERED ON MARKER BOARD
LCD TV-WALL MTD	VERIFY MOUNTING HEIGHT W/ OWNER
CAMERA	VERIFY MOUNTING HEIGHT W/ OWNER

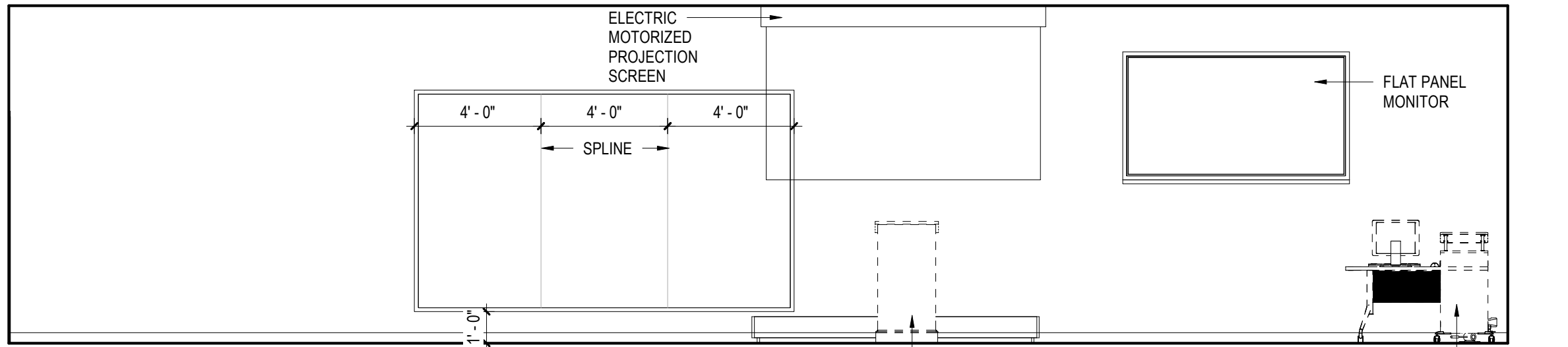
### I4.2 - GENERAL CASEWORK AND EQUIPMENT SCHEDULE

NO	DESCRIPTION	MANUFACTURER	MODEL	DIMENSIONS
100	2-DOOR TALL WARDROBE	CASE SYSTEMS	T2300	36"W x 24"D x 84"H
200	ADA VANITY SINK BASE CABINET	CASE SYSTEMS	D1000	36"W x 24"D x 34"H
204	2-DOOR/2-DRAWER BASE CABINET	CASE SYSTEMS	B3100	33"W x 24"D x 34"H
215	3-EQUAL DRAWER BASE CABINET	CASE SYSTEMS	B4030	18"W x 24"D x 34"H
302	2-DOOR WALL CABINET	CASE SYSTEMS	W0100	36"W x 14"D x 24"H
304	2-DOOR WALL CABINET	CASE SYSTEMS	W0100	36"W x 24"D x 16"H
306	2-DOOR WALL CABINET	CASE SYSTEMS	W0100	33"W x 14"D x 24"H
311	1-DOOR WALL CABINET - LEFT HINGED	CASE SYSTEMS	W0110	18"W x 14"D x 24"H
701	MARKERBOARD	SEE SPECIFICATIONS	SEE SPECIFICATIONS	16'-0"W x 5'-0"H
716	TACK BOARD	SEE SPECIFICATIONS	SEE SPECIFICATIONS	6'-0"W x 5'-0"H

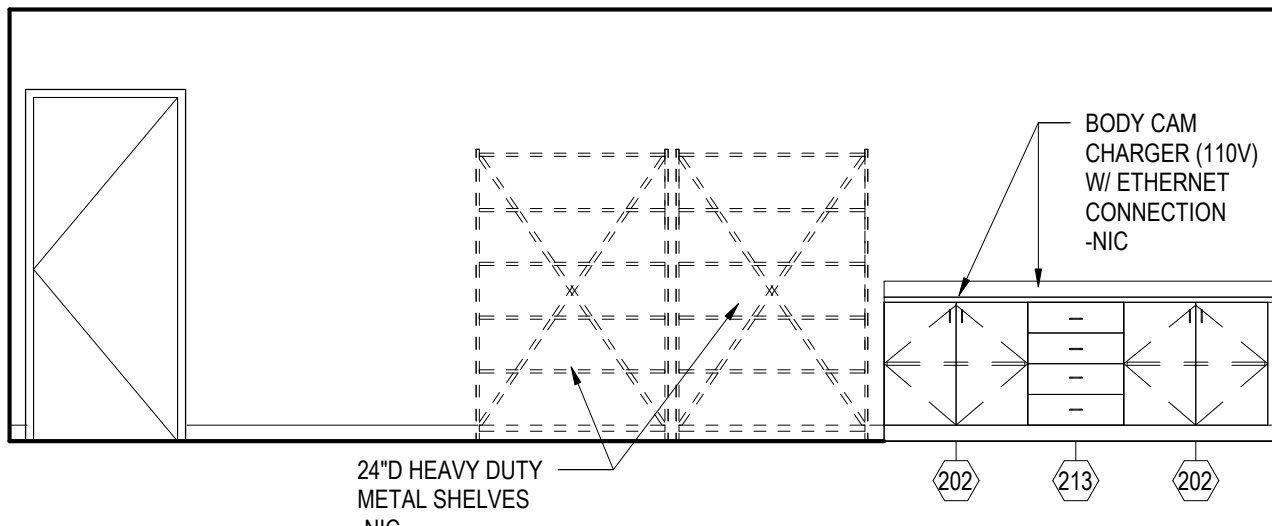




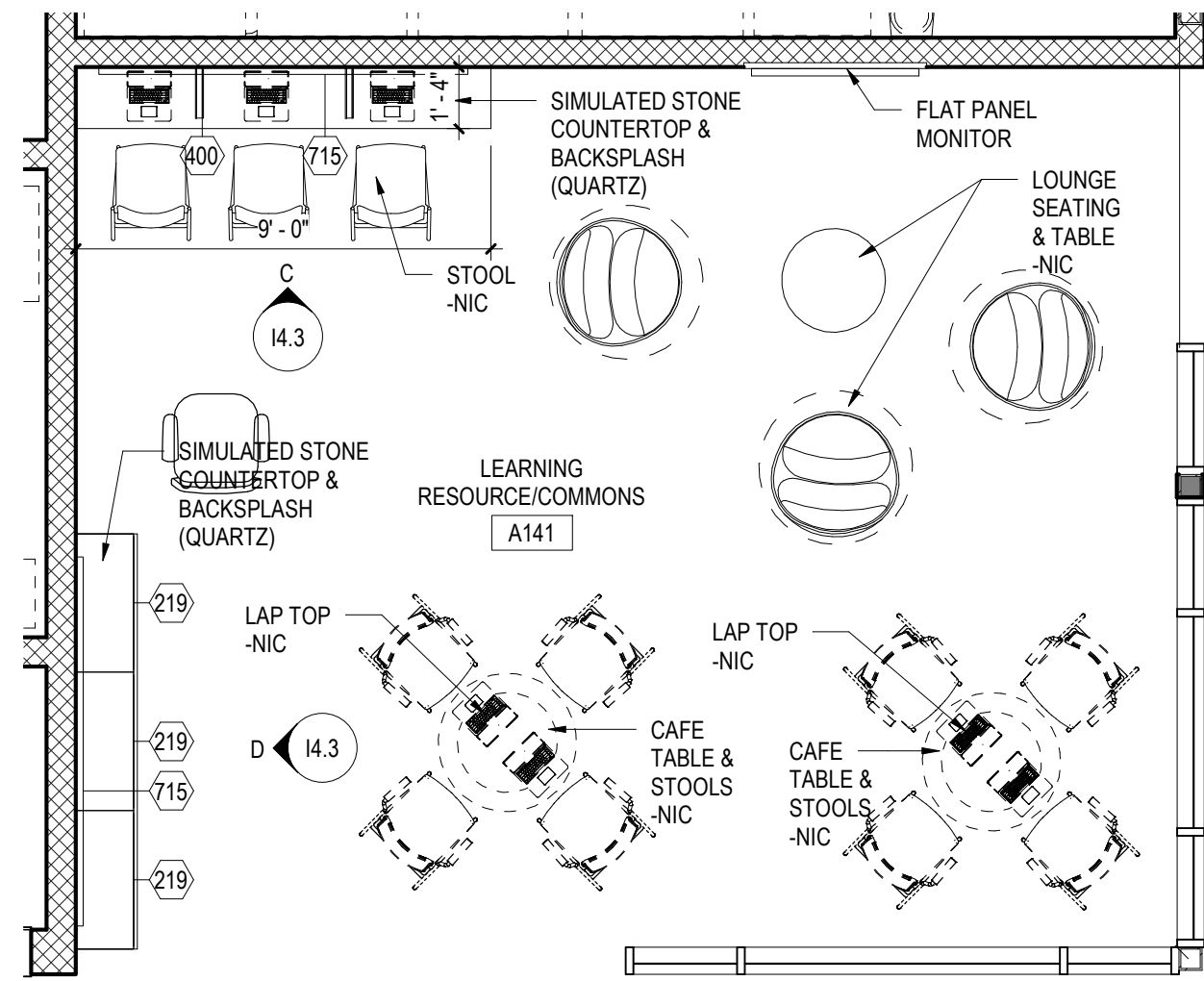
1  
14.3  
B100 & B102 LARGE CLASSROOM  
1/4" = 1'-0"



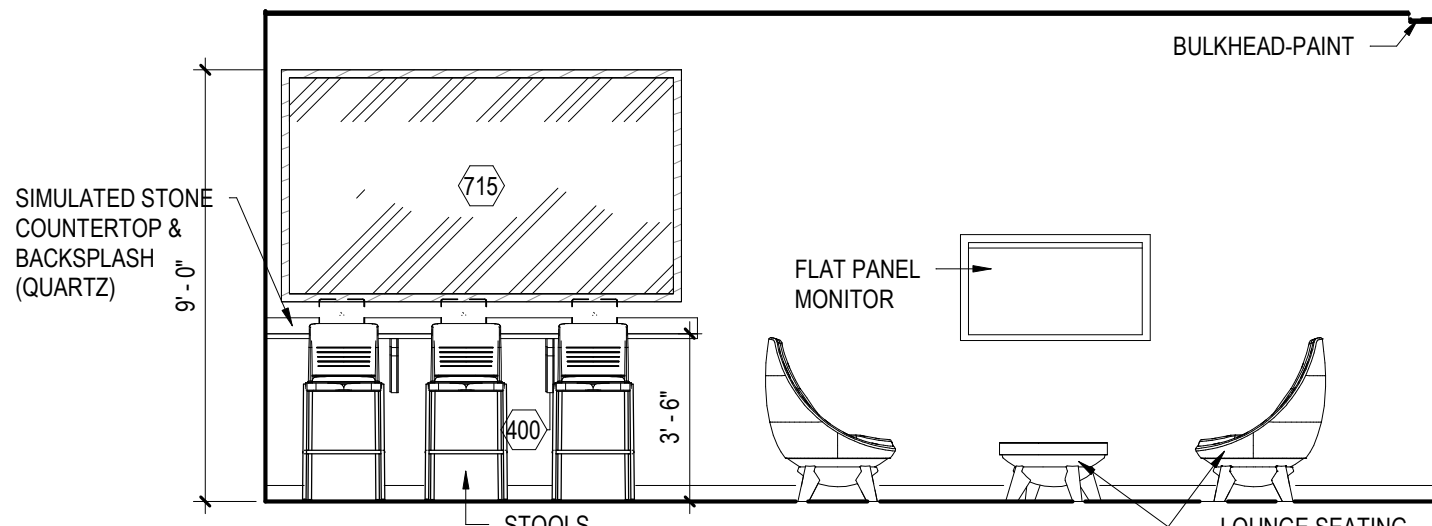
A  
14.3  
INTERIOR ELEVATION A  
1/4" = 1'-0"



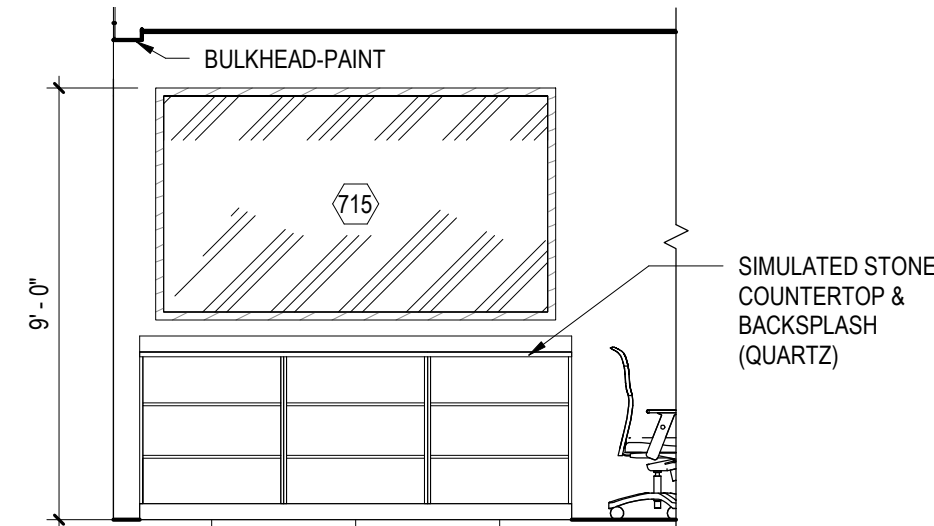
B  
14.3  
INTERIOR ELEVATION B  
1/4" = 1'-0"



2  
14.3  
A114 LEARNING RESOURCE/ COMMUNITY  
1/4" = 1'-0"



C  
14.3  
INTERIOR ELEVATION C  
1/4" = 1'-0"



D  
14.3  
INTERIOR ELEVATION D  
1/4" = 1'-0"

GENERAL NOTE IN REFERENCE TO 14.3

1. COORDINATE WITH AUDIO/ VIDEO (TA SERIES) CONSTRUCTION DOCUMENTS FOR ALL MOUNTING HEIGHTS, EQUIPMENT SIZES AND APPROVED LOCATIONS.

MOUNTING HEIGHT SCHEDULE

MARKER BOARD	3'-0" AFF TO BOTTOM EDGE
TACK BOARD	3'-0" AFF TO BOTTOM EDGE
BASE CABINETS	3'-0" AFF TO TOP OF CABINET
WALL CABINETS	7'-0" AFF TO TOP OF CABINET
PROJECTION SCREEN	MOUNTED DIRECTLY BELOW CEILING
SHORT THROW-WALL MTD	CENTERED ON MARKER BOARD
LCD TV-WALL MTD	VERIFY MOUNTING HEIGHT W/ OWNER
CAMERA	VERIFY MOUNTING HEIGHT W/ OWNER

14.3 - GENERAL CASEWORK AND EQUIPMENT SCHEDULE

NO	DESCRIPTION	MANUFACTURER	MODEL	DIMENSIONS
219	OPEN SHELVING	CASE SYSTEMS	B0000	36"W x 16"D x 42"H
400	BUILT-IN SIMULATED STONE (QUARTZ) COUTERTOP & WORK SURFACE TO INCLUDE PEDESTAL SUPPORT BRACKETS AS REQUIRED BY MANUFACTURER'S RECOMMENDATIONS. PROVIDE (5) 2" GROMMETS.	CASE SYSTEMS	X0650	SEE DRAWINGS x42"H
202	2-DOOR BASE CABINET	CASE SYSTEMS	B0100	36"W x 24"D x 36"H
213	4-EQUAL DRAWER BASE CABINET	CASE SYSTEMS	B4040	24"W x 24"D x 36"H
701	MARKERBOARD	SEE SPECIFICATIONS	SEE SPECIFICATIONS	16'-0"W x 5'-0"H
704	MARKERBOARD	SEE SPECIFICATIONS	SEE SPECIFICATIONS	12'-0"W x 7'-0"H
712	TACK BOARD	SEE SPECIFICATIONS	SEE SPECIFICATIONS	4'-0"W x 5'-0"H
715	MAPLE WOOD FRAME TACK BOARD W/XOREL FABRIC	SEE SPECIFICATIONS	SEE SPECIFICATIONS	8'-0"W x 4'-6"H

PROFESSIONAL CERTIFICATION:  
I CERTIFY THAT THESE  
DOCUMENTS WERE PREPARED  
BY OR APPROVED BY ME AND  
THAT I AM A DULY LICENSED  
ARCHITECT UNDER THE LAWS  
OF THE STATE OF MARYLAND.  
LICENSE NO. 8490  
EXPIRATION DATE: 3/4/2021



ALL REPORTS, PLANS, SPECIFICATIONS AND COMPUTER FILES RELATING TO THIS PROJECT ARE THE PROPERTY OF CRABTREE, ROHRBAUGH & ASSOCIATES. CRABTREE ROHRBAUGH & ASSOCIATES RETAINS ALL COMMON LAW, STATUTE AND OTHER RESERVED RIGHTS INCLUDING THE COPYRIGHT THEREIN. REPRODUCTION OF THE MATERIAL HEREIN OR SUBSTANTIAL USE WITHOUT WRITTEN PERMISSION OF CRABTREE, ROHRBAUGH & ASSOCIATES VIOLATES THE COPYRIGHT LAWS OF THE UNITED STATES AND WILL BE SUBJECT TO LEGAL PROSECUTION. © CRABTREE, ROHRBAUGH & ASSOCIATES, INC. 2019

REVISIONS

MM-DD-YY	NAME	DESCRIPTION OF CHANGES

**CRABTREE ROHRBAUGH & ASSOCIATES - ARCHITECTS**  
401 EAST WINDING HILL ROAD, MECHANICSBURG PA 17055 717-458-0272 www.cra-architects.com  
BALTIMORE, MARYLAND CHARLOTTESVILLE, VIRGINIA WHITE SULPHUR SPRINGS, WEST VIRGINIA

PROPOSED NEW

**WASHINGTON COUNTY PUBLIC SAFETY TRAINING CENTER**  
WASHINGTON COUNTY PROJECT NO. 28-266



LARGE SCALE LAYOUT LARGE CLASSROOMS & COLLABORATIVE LEARNING

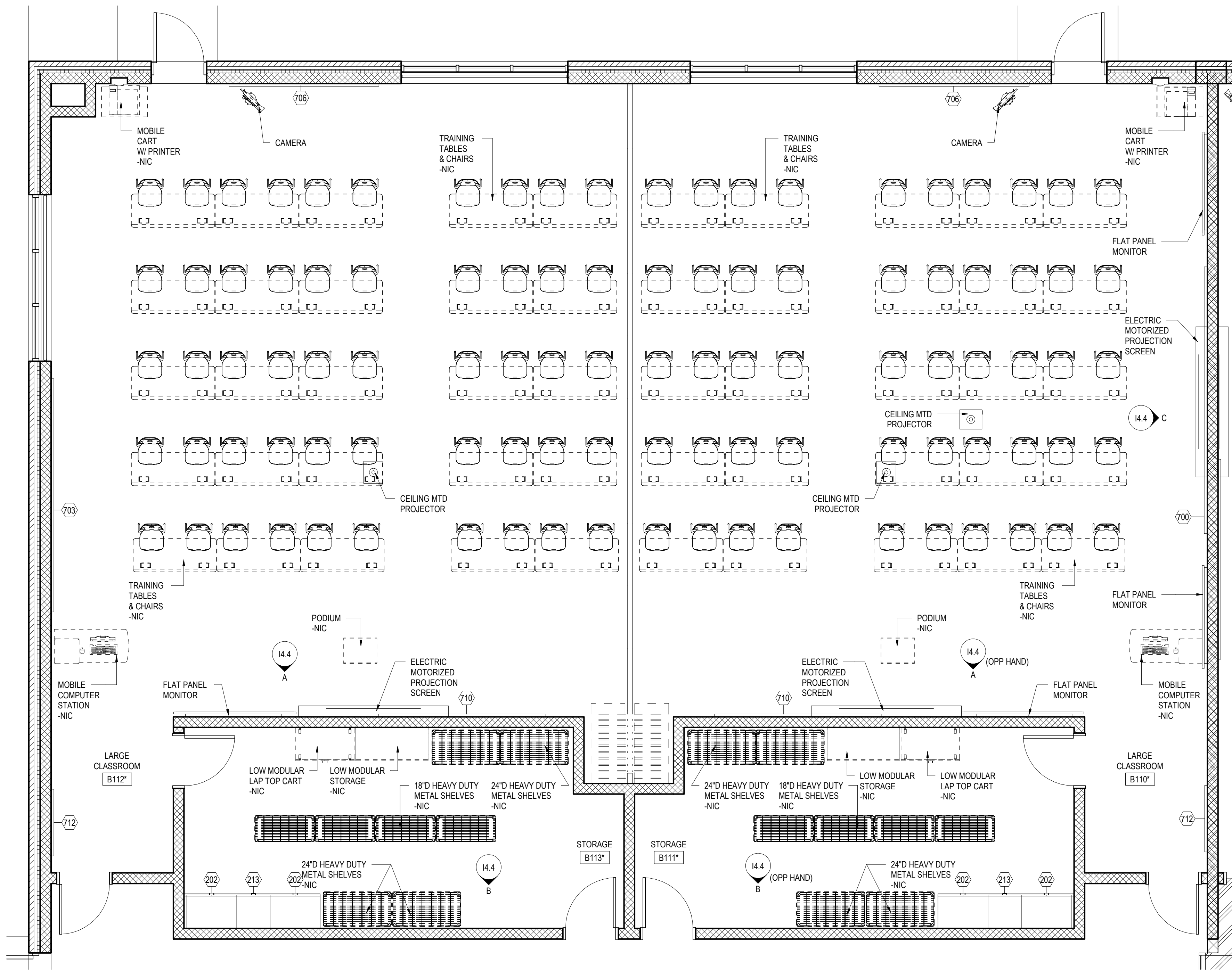
PLOT SCALE:  
1/4" = 1'-0"

DATE:  
DECEMBER 18, 2019

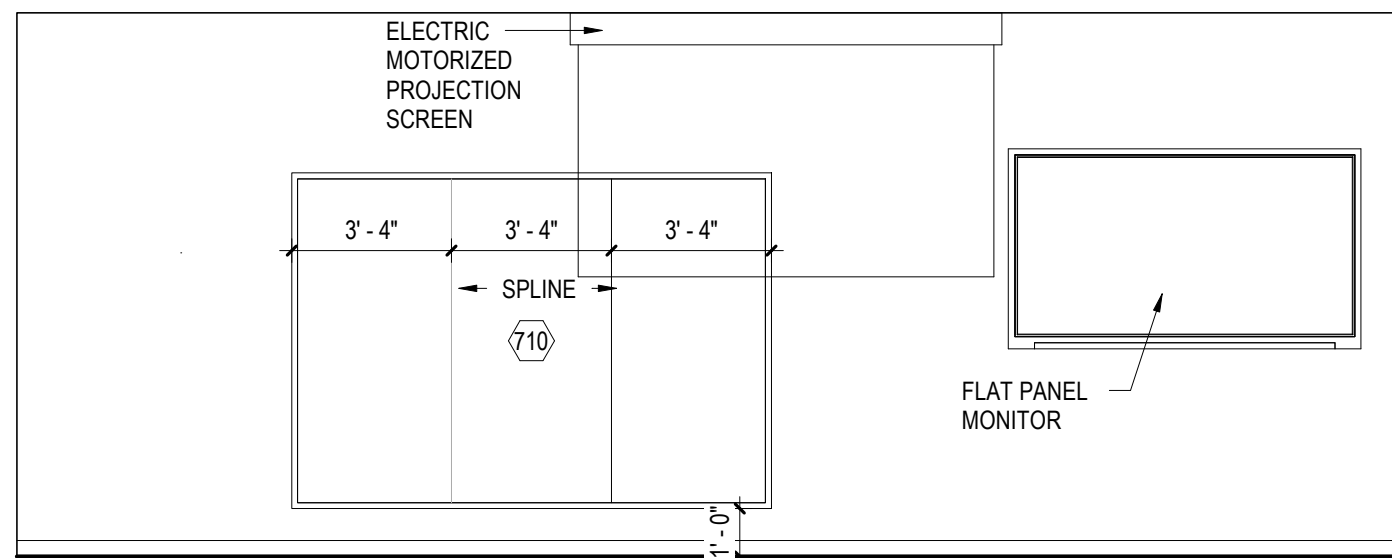
**PROJECT**  
3089

**14.3**

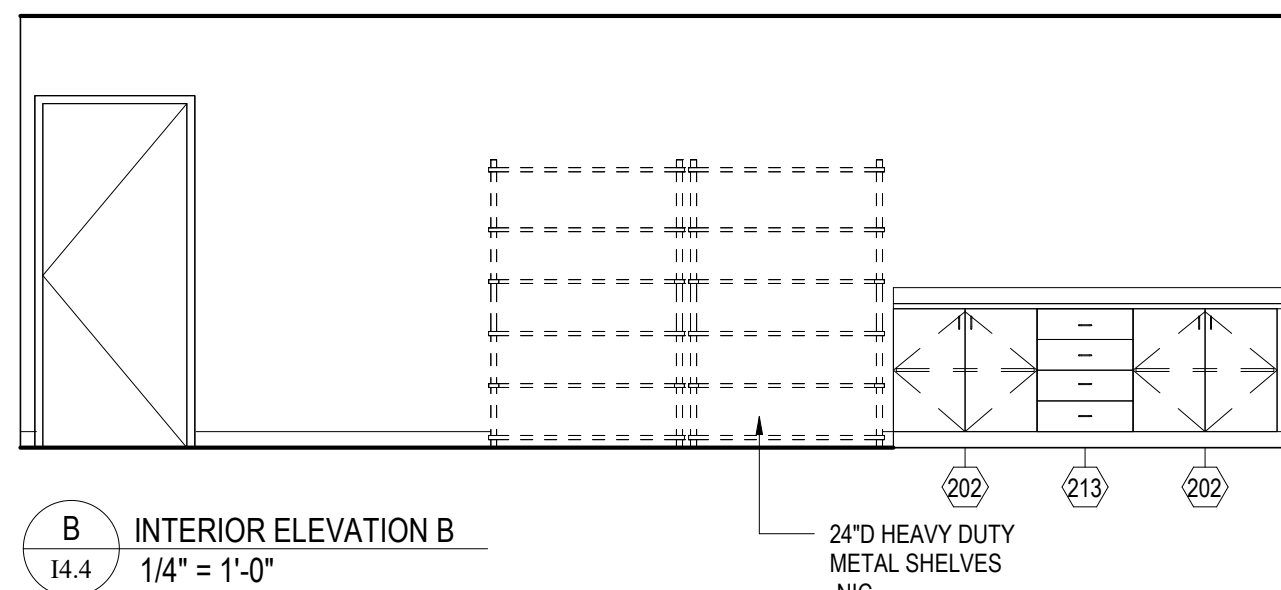




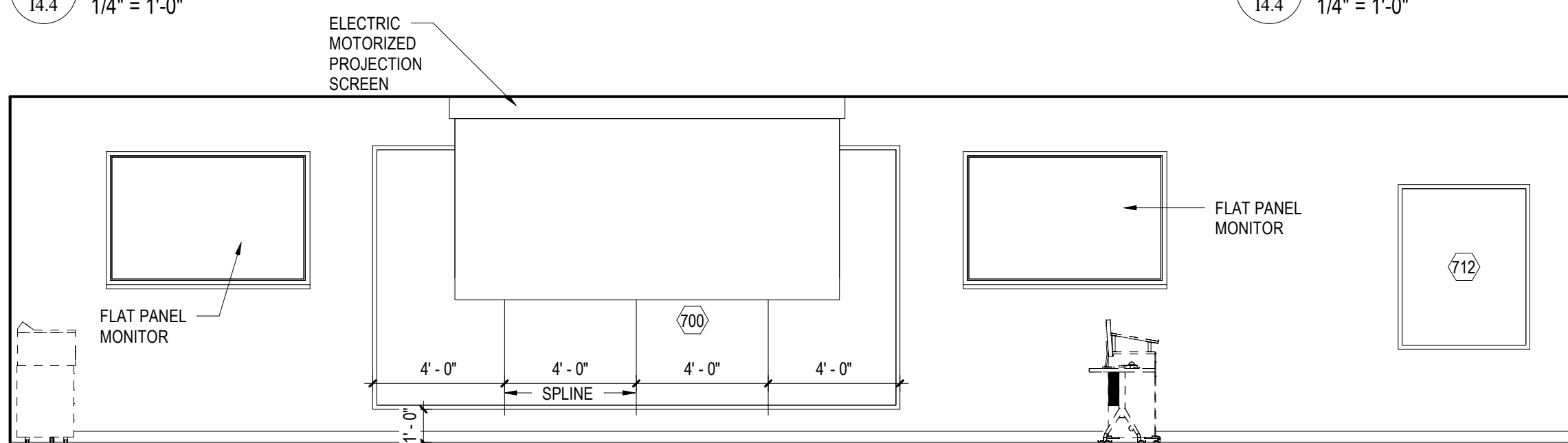
1  
14.4  
LARGE CLASSROOM- ALTERNATE  
1/4" = 1'-0"



A  
14.4  
INTERIOR ELEVATION A  
1/4" = 1'-0"



B  
14.4  
INTERIOR ELEVATION B  
1/4" = 1'-0"



C  
14.4  
INTERIOR ELEVATION C  
1/4" = 1'-0"

GENERAL NOTE IN REFERENCE TO 14.4	
1. COORDINATE WITH AUDIO/ VIDEO (TA SERIES) CONSTRUCTION DOCUMENTS FOR ALL MOUNTING HEIGHTS, EQUIPMENT SIZES AND APPROVED LOCATIONS.	
MOUNTING HEIGHT SCHEDULE	
MARKER BOARD	3'-0" AFF TO BOTTOM EDGE
TACK BOARD	3'-0" AFF TO BOTTOM EDGE
BASE CABINETS	3'-0" AFF TO TOP OF CABINET
WALL CABINETS	7'-0" AFF TO TOP OF CABINET
PROJECTION SCREEN	MOUNTED DIRECTLY BELOW CEILING
SHORT THROW-WALL MTD	CENTERED ON MARKER BOARD
LCD TV-WALL MTD	VERIFY MOUNTING HEIGHT W/ OWNER
CAMERA	VERIFY MOUNTING HEIGHT W/ OWNER

14.4 - GENERAL CASEWORK AND EQUIPMENT SCHEDULE				
NO	DESCRIPTION	MANUFACTURER	MODEL	DIMENSIONS
202	2-DOOR BASE CABINET	CASE SYSTEMS	B0100	36"W x 24"D x 36"H
213	4-EQUAL DRAWER BASE CABINET	CASE SYSTEMS	B4040	24"W x 24"D x 36"H
702	MARKERBOARD	SEE SPECIFICATIONS	SEE SPECIFICATIONS	16'-0"W x 4'-0"H
703	MARKERBOARD	SEE SPECIFICATIONS	SEE SPECIFICATIONS	14'-0"W x 5'-0"H
705	MARKERBOARD	SEE SPECIFICATIONS	SEE SPECIFICATIONS	12'-0"W x 5'-0"H
706	MARKERBOARD	SEE SPECIFICATIONS	SEE SPECIFICATIONS	9'-0"W x 5'-0"H
710	MARKERBOARD	SEE SPECIFICATIONS	SEE SPECIFICATIONS	10'-0"W x 7'-0"H
713	TACK BOARD	SEE SPECIFICATIONS	SEE SPECIFICATIONS	4'-0"W x 4'-0"H

PROFESSIONAL CERTIFICATION:  
I CERTIFY THAT THESE  
DOCUMENTS WERE PREPARED  
BY OR APPROVED BY ME AND  
THAT I AM A DULY LICENSED  
ARCHITECT UNDER THE LAWS  
OF THE STATE OF MARYLAND.  
LICENSE NO. 8490  
EXPIRATION DATE: 3/4/2021



ALL REPORTS, PLANS, SPECIFICATIONS AND COMPUTER FILES RELATING TO THIS PROJECT ARE THE PROPERTY OF CRABTREE, ROHRBAUGH & ASSOCIATES. CRABTREE ROHRBAUGH & ASSOCIATES RETAINS ALL COMMON LAW, STATUTE AND OTHER RESERVED RIGHTS INCLUDING THE COPYRIGHT THEREIN. REPRODUCTION OF THE MATERIAL HEREIN OR SUBSTANTIAL USE WITHOUT WRITTEN PERMISSION OF CRABTREE, ROHRBAUGH & ASSOCIATES VIOLATES THE COPYRIGHT LAWS OF THE UNITED STATES AND WILL BE SUBJECT TO LEGAL PROSECUTION. © CRABTREE, ROHRBAUGH & ASSOCIATES, INC. 2019

## REVISIONS

MM-DD-YY	NAME	DESCRIPTION OF CHANGES

**CRABTREE ROHRBAUGH & ASSOCIATES - ARCHITECTS**  
401 EAST WINDING HILL ROAD, MECHANICSBURG PA 17055 717-458-0272 www.cra-architects.com  
BALTIMORE, MARYLAND CHARLOTTESVILLE, VIRGINIA WHITE SULPHUR SPRINGS, WEST VIRGINIA

PROPOSED NEW  
WASHINGTON COUNTY PUBLIC SAFETY TRAINING CENTER  
WASHINGTON COUNTY PROJECT NO. 28-266

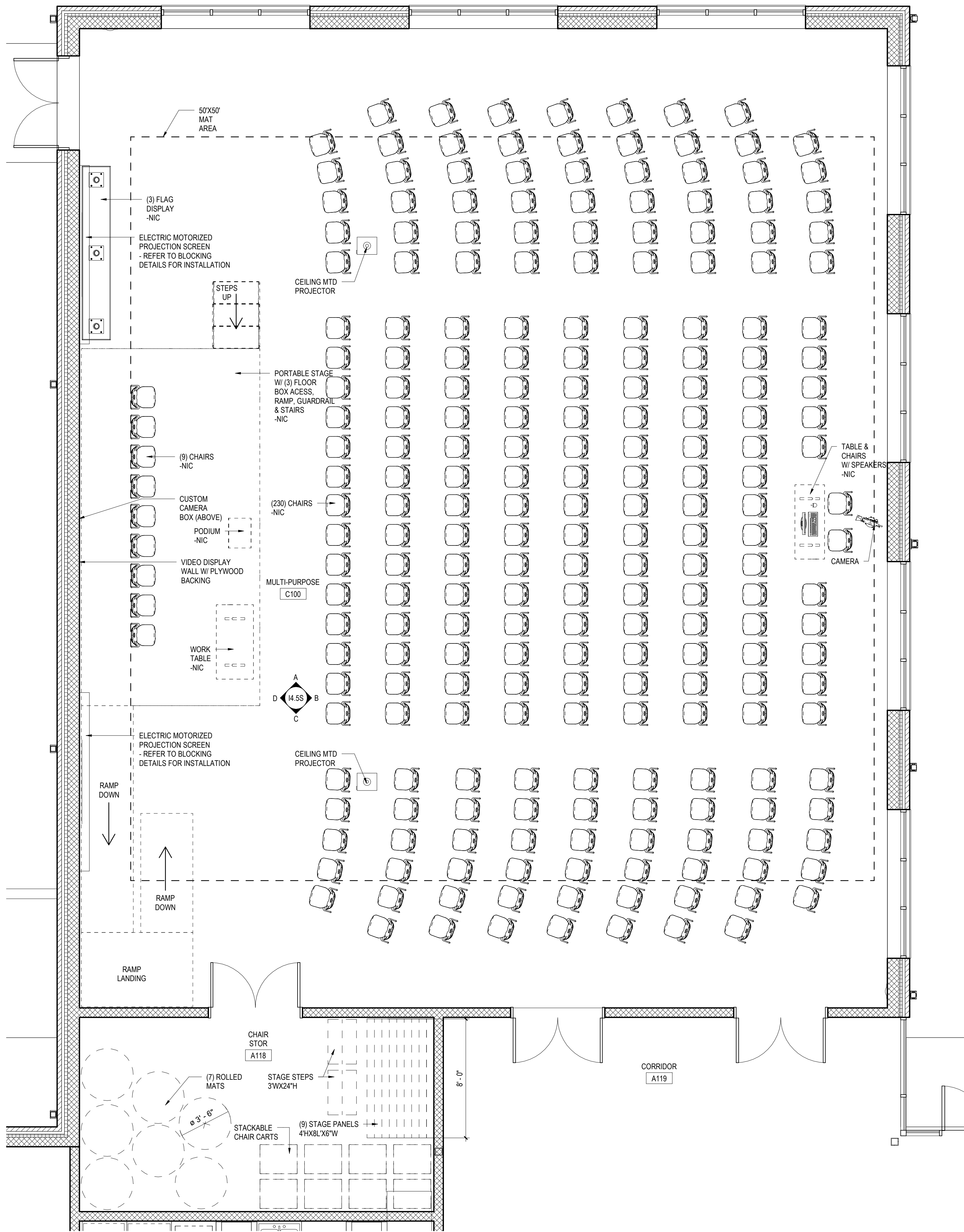


LARGE SCALE LAYOUTS  
CLASSROOMS- ALTERNATE  
PLOT SCALE:  
1/4" = 1'-0"  
FILENAME:  
DATE:  
DECEMBER 18, 2019

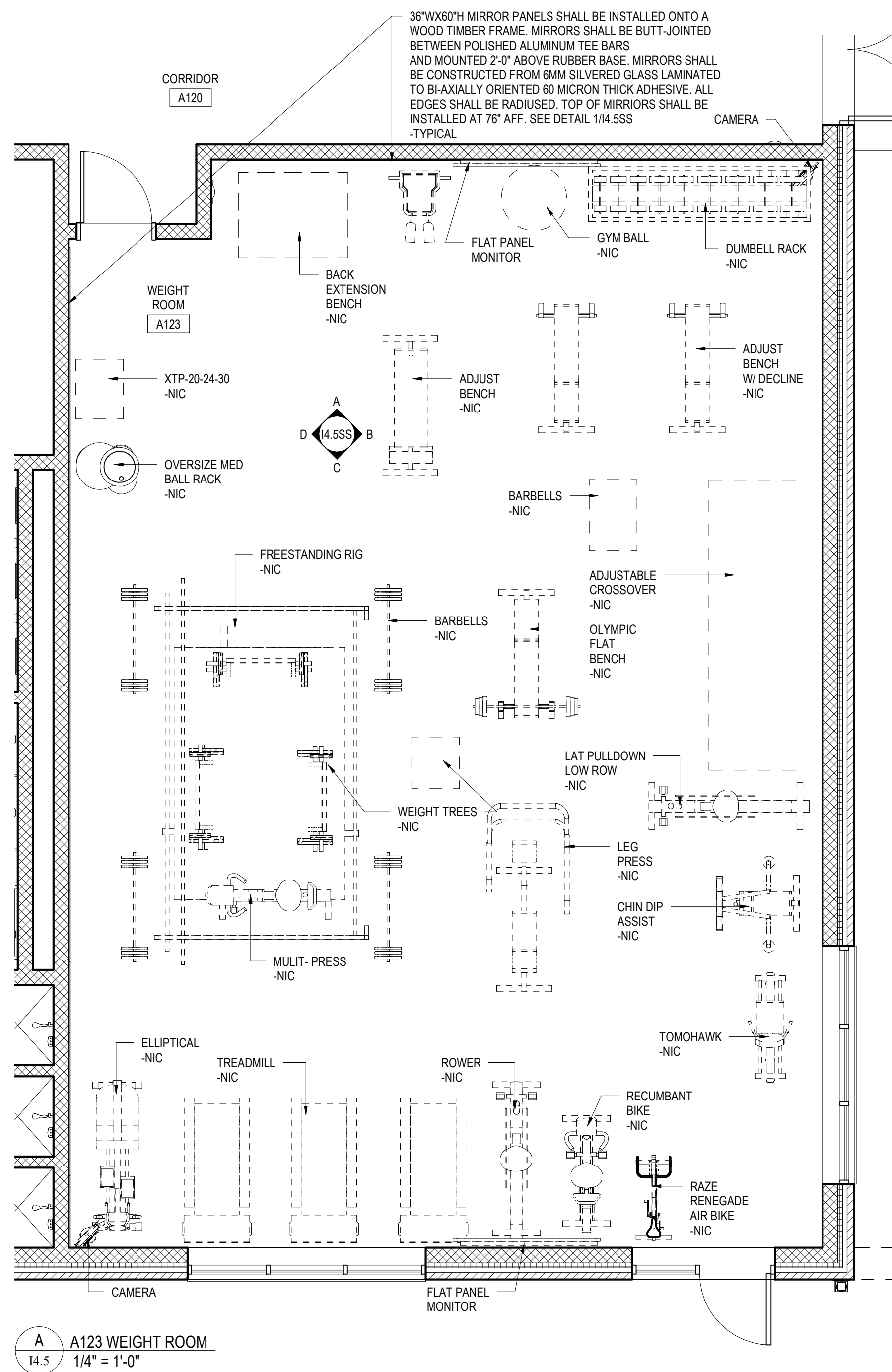
PROJECT  
3089

14.4





1  
14.5 C100 MULTI-PURPOSE ROOM  
1/4" = 1'-0"



A  
14.5 A123 WEIGHT ROOM  
1/4" = 1'-0"

GENERAL NOTE IN REFERENCE TO I4.5  
1. COORDINATE WITH AUDIO/ VIDEO (TA SERIES) CONSTRUCTION DOCUMENTS FOR ALL MOUNTING HEIGHTS, EQUIPMENT SIZES AND APPROVED LOCATIONS.

MOUNTING HEIGHT SCHEDULE	
MARKER BOARD	3'-0" AFF TO BOTTOM EDGE
TACK BOARD	3'-0" AFF TO BOTTOM EDGE
BASE CABINETS	3'-0" AFF TO TOP OF CABINET
WALL CABINETS	7'-0" AFF TO TOP OF CABINET
PROJECTION SCREEN	MOUNTED DIRECTLY BELOW CEILING
SHORT THROW-WALL MTD	CENTERED ON MARKER BOARD
LCD TV-WALL MTD	VERIFY MOUNTING HEIGHT W/ OWNER
CAMERA	VERIFY MOUNTING HEIGHT W/ OWNER

PROFESSIONAL CERTIFICATION:  
I CERTIFY THAT THESE  
DOCUMENTS WERE PREPARED  
BY OR APPROVED BY ME AND  
THAT I AM A DULY LICENSED  
ARCHITECT UNDER THE LAWS  
OF THE STATE OF MARYLAND.  
LICENSE NO. 8490  
EXPIRATION DATE: 3/4/2021



ALL REPORTS, PLANS, SPECIFICATIONS AND COMPUTER FILES RELATING TO THIS PROJECT ARE THE PROPERTY OF CRABTREE, ROHRBAUGH & ASSOCIATES. CRABTREE ROHRBAUGH & ASSOCIATES RETAINS ALL COMMON LAW, STATUTE AND OTHER RESERVED RIGHTS INCLUDING THE COPYRIGHT THEREIN. REPRODUCTION OF THE MATERIAL HEREIN OR SUBSTANTIAL USE WITHOUT WRITTEN PERMISSION OF CRABTREE, ROHRBAUGH & ASSOCIATES VIOLATES THE COPYRIGHT LAWS OF THE UNITED STATES AND WILL BE SUBJECT TO LEGAL PROSECUTION.  
© CRABTREE, ROHRBAUGH & ASSOCIATES, INC. 2019

## REVISIONS

MM-DD-YY	NAME	DESCRIPTION OF CHANGES

**CRABTREE ROHRBAUGH & ASSOCIATES - ARCHITECTS**  
401 EAST WINDING HILL ROAD, MECHANICSBURG PA 17055 717-458-0272 [www.cra-architects.com](http://www.cra-architects.com)  
BALTIMORE, MARYLAND CHARLOTTESVILLE, VIRGINIA WHITE SULPHUR SPRINGS, WEST VIRGINIA



LARGE SCALE LAYOUTS  
MULTI PURPOSE ROOM  
PLOT SCALE:  
1/4" = 1'-0"  
FILENAME:  
DATE:  
DECEMBER 18, 2019

PROPOSED NEW  
**WASHINGTON COUNTY PUBLIC SAFETY TRAINING CENTER**  
WASHINGTON COUNTY PROJECT NO. 28-266

PROJECT  
3089

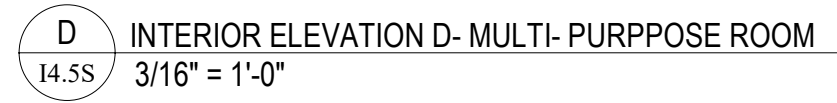
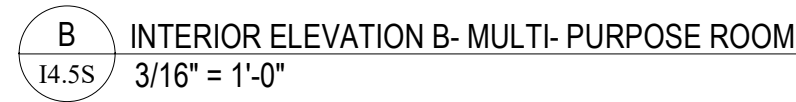
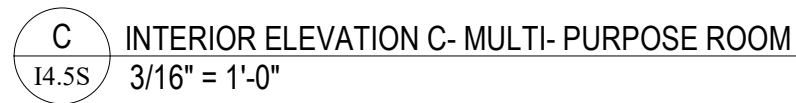
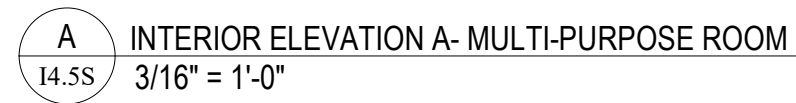
I4.5



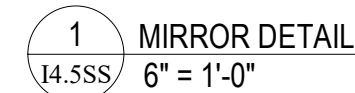
[illegible]

WASHINGTON COUNTY PUBLIC SAFETY TRAINING CENTER  
WASHINGTON COUNTY PROJECT NO. 28-266

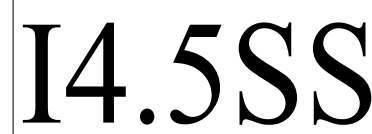
# I4.5S



DATE: DECEMBER 18, 2019

[illegible]

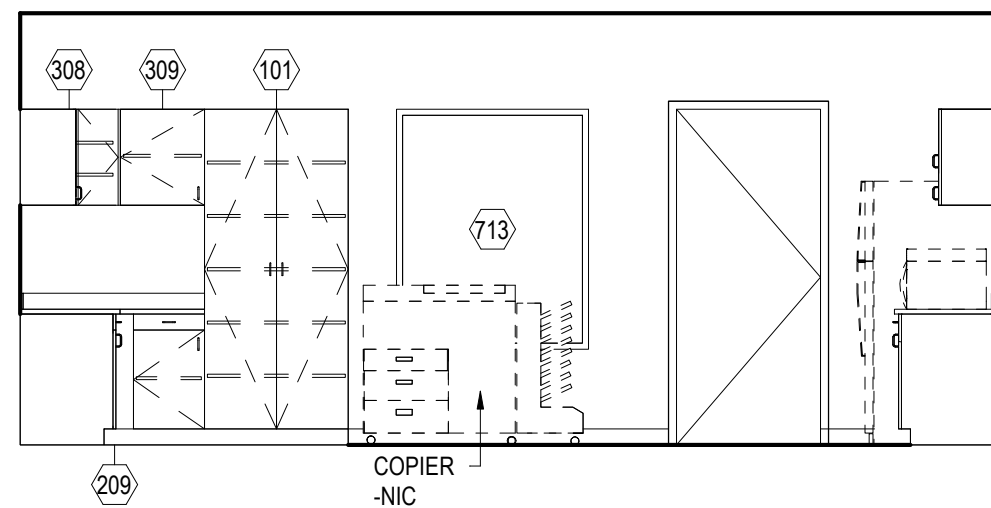
WASHINGTON COUNTY PROJECT NO. 28-266



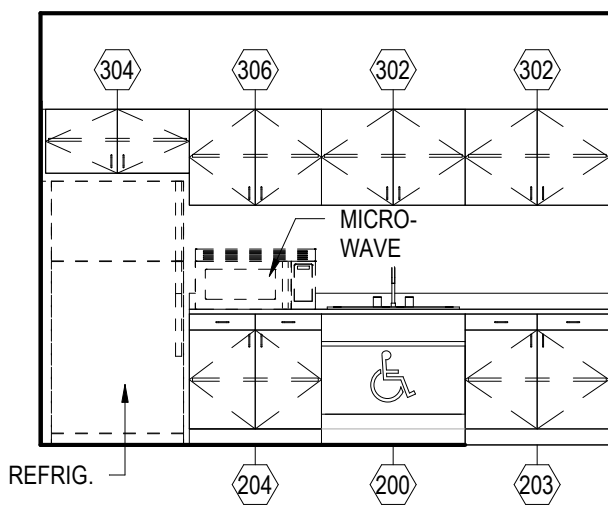




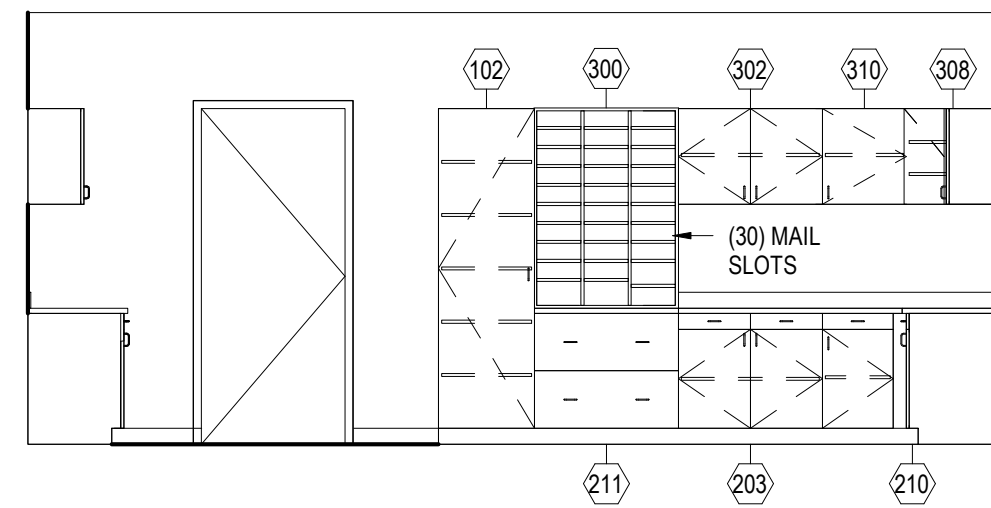
1 ADMINISTRATION  
14.6 1/4" = 1'-0"



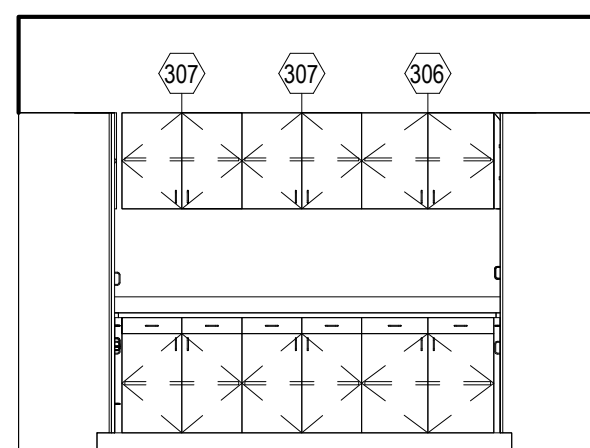
A INTERIOR ELEVATION A  
14.6 1/4" = 1'-0"



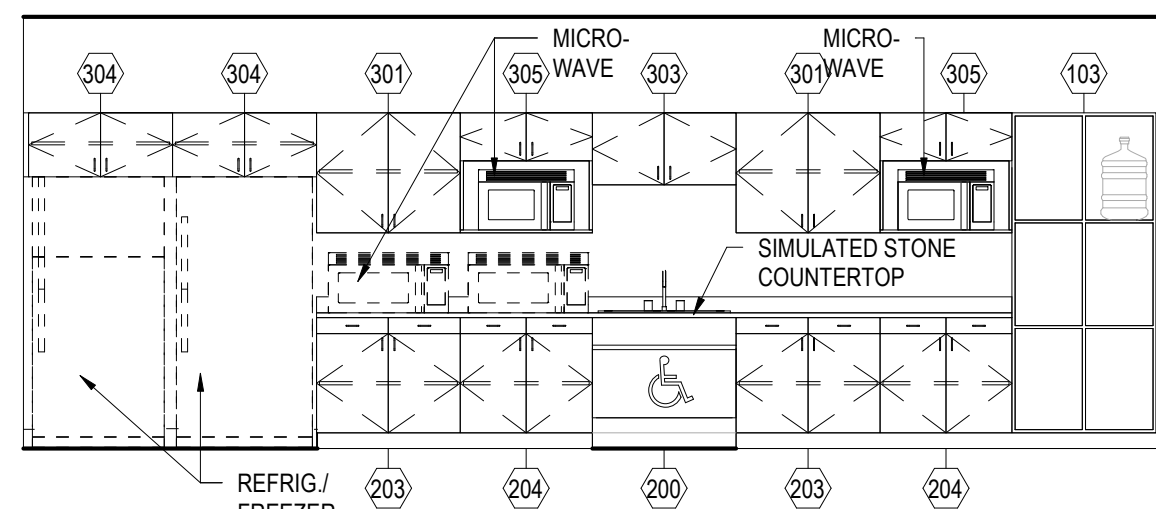
B INTERIOR ELEVATION B  
14.6 1/4" = 1'-0"



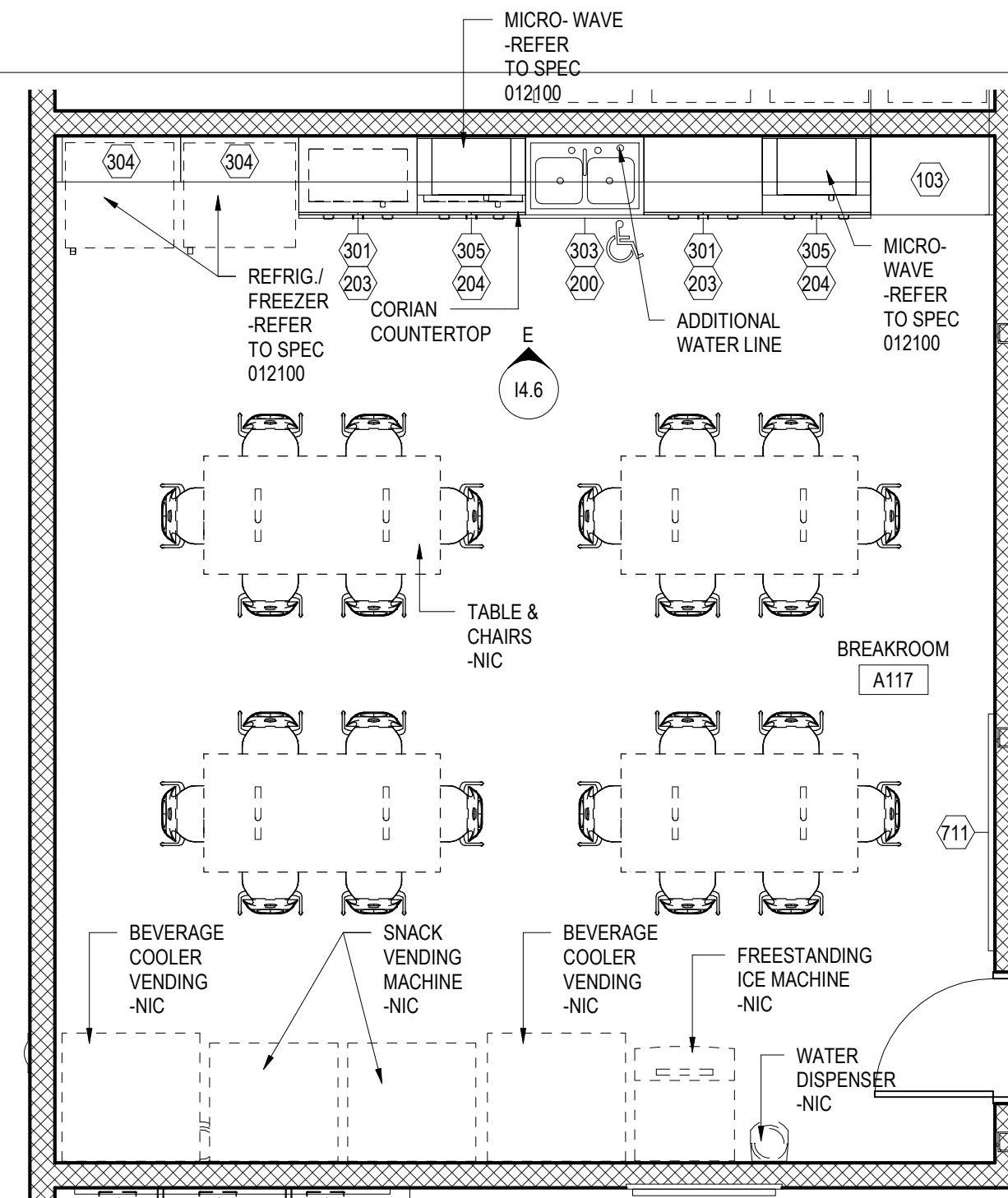
C INTERIOR ELEVATION C  
14.6 1/4" = 1'-0"



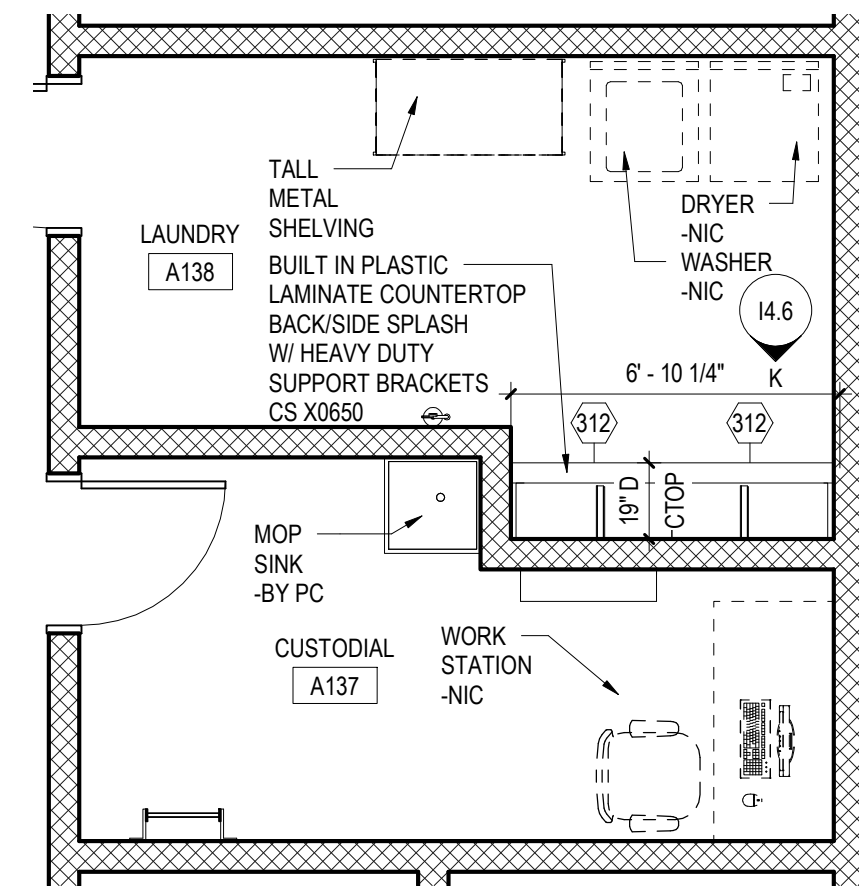
D INTERIOR ELEVATION D  
14.6 1/4" = 1'-0"



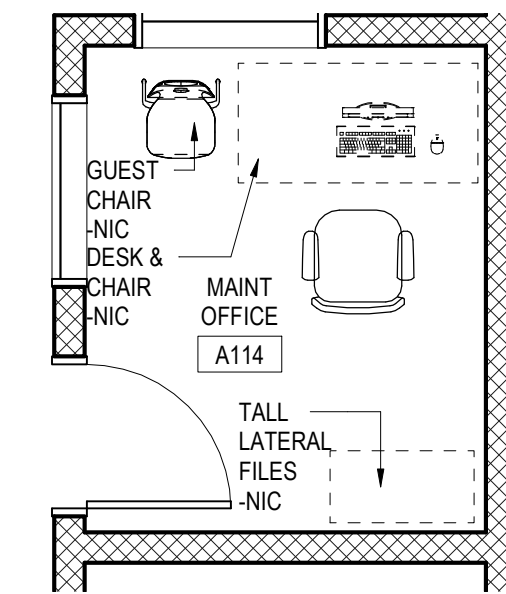
E INTERIOR ELEVATION E  
14.6 1/4" = 1'-0"



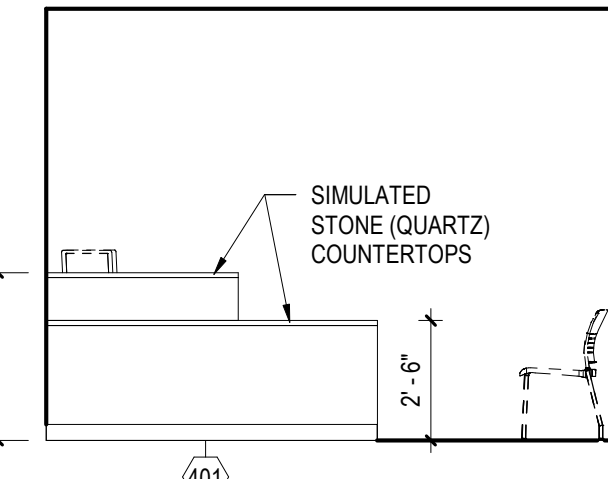
2 A117 KITCHEN  
14.6 1/4" = 1'-0"



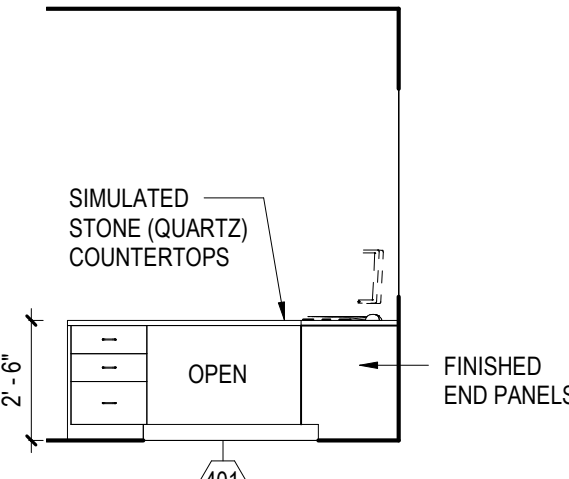
4 A137 CUSTODIAL & A138 LAUNDRY ROOM  
14.6 1/4" = 1'-0"



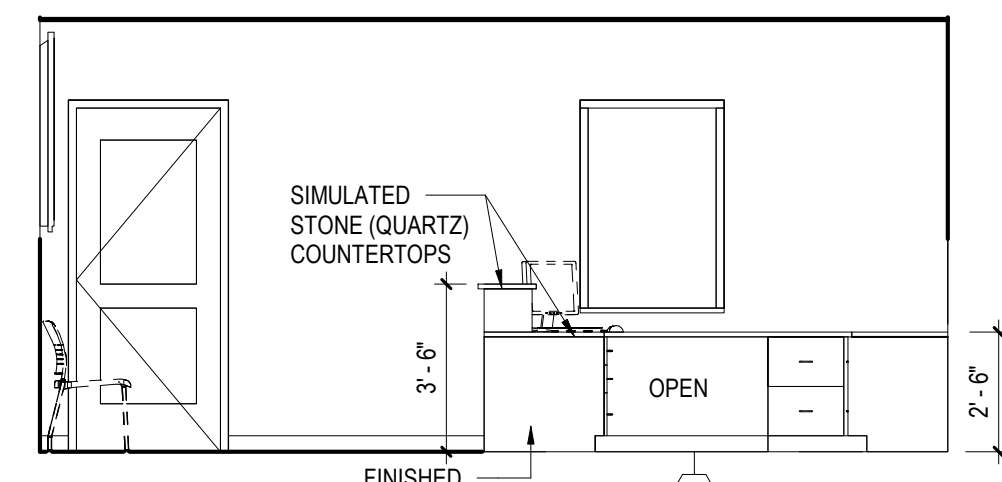
3 A114 MAINTENANCE OFFICE  
14.6 1/4" = 1'-0"



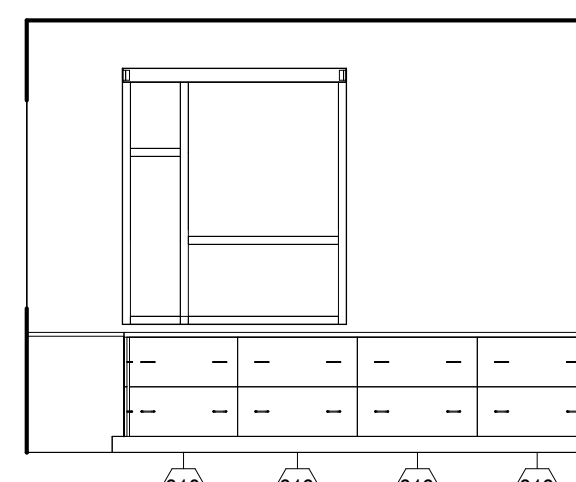
F INTERIOR ELEVATION F  
14.6 1/4" = 1'-0"



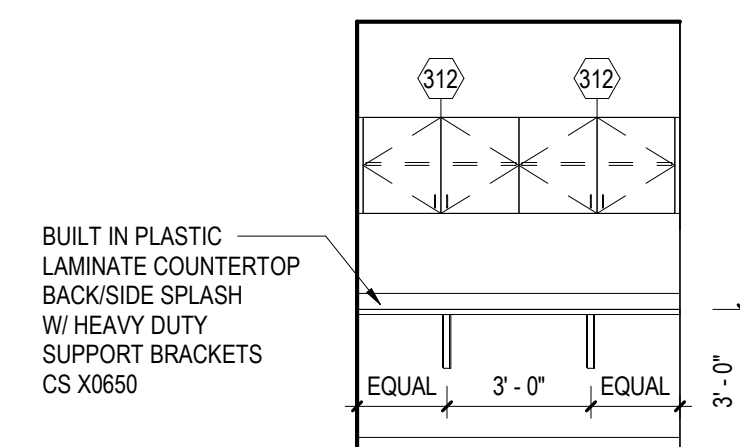
G INTERIOR ELEVATION G  
14.6 1/4" = 1'-0"



H INTERIOR ELEVATION H  
14.6 1/4" = 1'-0"



J INTERIOR ELEVATION J  
14.6 1/4" = 1'-0"



K INTERIOR ELEVATION K  
14.6 1/4" = 1'-0"

#### 14.6 - GENERAL CASEWORK AND EQUIPMENT SCHEDULE

NO	DESCRIPTION	MANUFACTURER	MODEL	DIMENSIONS
401	BUILT-IN SIMULATED STONE (QUARTZ) TRANSACTION LEDGE & WORK SURFACE TO INCLUDE (1) BOX/BOX/FILE, (1) FILE/FILE AND KEYBOARD TRAY. PROVIDE (5) 2" GROMMETS.	CASE SYSTEMS	B4500, B4540	SEE DRAWINGS x30"H/42"H
101	2-DOOR TALL STORAGE	CASE SYSTEMS	T0100	36"W x 24"D x 84"H
102	1-DOOR TALL STORAGE - LEFT HINGED	CASE SYSTEMS	T0110	24"W x 24"D x 84"H
103	OPEN TALL STORAGE UNIT W/VERT. DIV. AND (2) ADJUSTABLE SHELVES	CASE SYSTEMS	T1000M	36"W x 24"D x 84"H
200	ADA VANITY SINK BASE CABINET	CASE SYSTEMS	D1000	36"W x 24"D x 34"H
203	2-DOOR/2-DRAWER BASE CABINE	CASE SYSTEMS	B3100	36"W x 24"D x 34"H
204	2-DOOR/2-DRAWER BASE CABINET	CASE SYSTEMS	B3100	33"W x 24"D x 34"H
205	2-DOOR/2-DRAWER BASE CABINE	CASE SYSTEMS	B3100	30"W x 24"D x 34"H
209	1-DOOR/1-DRAWER BLIND BASE CABINET - RIGHT SIDE EXPOSED	CASE SYSTEMS	B3210	45"W x 24"D x 34"H
210	1-DOOR/1-DRAWER BLIND BASE CABINET - LEFT SIDE EXPOSED	CASE SYSTEMS	B3220	45"W x 24"D x 34"H
211	2-DRAWER LATERAL FILE CABINET	CASE SYSTEMS	B7500	36"W x 24"D x 34"H
212	2-DRAWER LATERAL FILE CABINET	CASE SYSTEMS	B7500	30"W x 24"D x 30"H
218	2-DRAWER LATERAL FILE CABINET	CASE SYSTEMS	B7500	27"W x 24"D x 30"H
300	MAILBOX UNIT W/ 30 MAIL SLOTS AND LABELS	CASE SYSTEMS	W2700M	48"W x 14"D x 54"H
301	2-DOOR WALL CABINET	CASE SYSTEMS	W0100	36"W x 14"D x 30"H
302	2-DOOR WALL CABINET	CASE SYSTEMS	W0100	36"W x 14"D x 24"H
303	2-DOOR WALL CABINET	CASE SYSTEMS	W0100	36"W x 14"D x 18"H
304	2-DOOR WALL CABINET	CASE SYSTEMS	W0100	36"W x 24"D x 16"H
305	MICROWAVE CABINET (SEE ELEVATION)	CASE SYSTEMS	B4040M	33"W x 14"D x 30"H
306	2-DOOR WALL CABINET	CASE SYSTEMS	W0100	33"W x 14"D x 24"H
307	2-DOOR WALL CABINET	CASE SYSTEMS	W0100	30"W x 14"D x 24"H
308	1-DOOR CORNER WALL CABINET - LEFT HINGED	CASE SYSTEMS	W1210	24"W x 24"D x 24"H
309	1-DOOR WALL CABINET - LEFT HINGED	CASE SYSTEMS	W0110	21"W x 14"D x 24"H
310	1-DOOR WALL CABINET - RIGHT HINGED	CASE SYSTEMS	W0120	21"W x 14"D x 24"H
312	2-DOOR WALL CABINET	CASE SYSTEMS	W0100	39"W x 14"D x 24"H
707	MARKERBOARD	SEE SPECIFICATIONS	SEE SPECIFICATIONS	8'-0"W x 4'-0"H
709	MARKERBOARD	SEE SPECIFICATIONS	SEE SPECIFICATIONS	4'-0"W x 4'-0"H
711	TACK BOARD	SEE SPECIFICATIONS	SEE SPECIFICATIONS	6'-0"W x 4'-0"H
713	TACK BOARD	SEE SPECIFICATIONS	SEE SPECIFICATIONS	4'-0"W x 4'-0"H
714	TACK BOARD W/MAPLE FRAME	SEE SPECIFICATIONS	SEE SPECIFICATIONS	6'-0"W x 4'-0"H

#### GENERAL NOTE IN REFERENCE TO 14.6

1. ALL CASEWORK IN ADMINISTRATION AREA SHALL RECEIVE LOCKS.

#### MOUNTING HEIGHT SCHEDULE

MARKER BOARD	3'-0" AFF TO BOTTOM EDGE
TACK BOARD	3'-0" AFF TO BOTTOM EDGE
BASE CABINETS	3'-0" AFF TO TOP OF CABINET
WALL CABINETS	7'-0" AFF TO TOP OF CABINET
PROJECTION SCREEN	MOUNTED DIRECTLY BELOW CEILING
SHORT THROW-WALL MTD	CENTERED ON MARKER BOARD
LCD TV-WALL MTD	VERIFY MOUNTING HEIGHT W/ OWNER
CAMERA	VERIFY MOUNTING HEIGHT W/ OWNER

PROFESSIONAL CERTIFICATION:  
I CERTIFY THAT THESE  
DOCUMENTS WERE PREPARED  
BY OR APPROVED BY ME AND  
THAT I AM A DULY LICENSED  
ARCHITECT UNDER THE LAWS  
OF THE STATE OF MARYLAND.  
LICENSE NO. 8490  
EXPIRATION DATE: 3/4/2021



ALL REPORTS, PLANS, SPECIFICATIONS AND COMPUTER FILES RELATING TO THIS PROJECT ARE THE PROPERTY OF CRABTREE, ROHRBAUGH & ASSOCIATES. CRABTREE ROHRBAUGH & ASSOCIATES RETAINS ALL COMMON LAW, STATUTE AND OTHER RESERVED RIGHTS INCLUDING THE COPYRIGHT THEREIN. REPRODUCTION OF THE MATERIAL HEREIN OR SUBSTANTIAL USE WITHOUT WRITTEN PERMISSION OF CRABTREE, ROHRBAUGH & ASSOCIATES VIOLATES THE COPYRIGHT LAWS OF THE UNITED STATES AND WILL BE SUBJECT TO LEGAL PROSECUTION.  
© CRABTREE, ROHRBAUGH & ASSOCIATES, INC. 2019

#### REVISIONS

MM-DD-YY	NAME	DESCRIPTION OF CHANGES

CRABTREE ROHRBAUGH & ASSOCIATES - ARCHITECTS

401 EAST WINDING HILL ROAD, MECHANICSBURG PA 17055 717-458-0272

BALTIMORE, MARYLAND CHARLOTTESVILLE, VIRGINIA WHITE SULPHUR SPRINGS, WEST VIRGINIA

PROPOSED NEW

WASHINGTON COUNTY PUBLIC SAFETY TRAINING CENTER

WASHINGTON COUNTY PROJECT NO. 28-266



LARGE SCALE LAYOUTS  
ADMINISTRATION

PLOT SCALE:  
1/4" = 1'-0"

FILENAME:

DATE:  
DECEMBER 18, 2019

PROJECT  
3089

14.6



= FIELD A: SHEET VINYL CHARCOAL

= FIELD A: PORCELAIN TILE

= ACCENT A: SHEET VINYL BLUE

= ACCENT C: PORCELAIN TILE BLACK

= FIELD B: SHEET VINYL LT GRAY

= ENTRANCE MAT NAVY

= ACCENT B: SHEET VINYL BLACK

TRANSITION SCHEDULE AS INDICATED ON I7 DRAWINGS

CPT TO CONC	JOHNSONITE NO. CTA-XX-P
CPT TO CT/PT	JOHNSONITE NO. CTA-XX-M/ CTA-XX-A
CPT TO SV	JOHNSONITE NO. CTA-XX-H
SV TO CONC	JOHNSONITE NO. SSR-XX-B
SV TO RES	JOHNSONITE NO. SSR-XX-B
SV TO ARF	JOHNSONITE NO. CTA-XX-Y
PT TO CONC	MARBLE
PT TO SV	JOHNSONITE NO. CTA-XX-Z
PT TO RES	MARBLE

SEE SPECIFICATIONS FOR ADDITIONAL INFORMATION.

GENERAL NOTE IN REFERENCE TO ALL I7 DRAWINGS

1. DRAWING IS FOR FLOOR PATTERN USE ONLY. REFER TO ARCHITECTURAL/ INTERIOR DRAWINGS AND SPECIFICATIONS FOR ALL OTHER FINISHES, DIMENSIONS, DETAILS, ETC.

2. INSTALL EXPANSION JOINT STRIPS DIRECTLY ABOVE SUBSTRATE EXPANSION JOINTS AND ACCORDING TO NTMA'S WRITTEN RECOMMENDATIONS.

PROFESSIONAL CERTIFICATION:  
I CERTIFY THAT THESE DOCUMENTS WERE PREPARED BY OR APPROVED BY ME AND THAT I AM A DULY LICENSED ARCHITECT UNDER THE LAWS OF THE STATE OF MARYLAND.  
LICENSE NO. 8490  
EXPIRATION DATE: 3/4/2021



ALL REPORTS, PLANS, SPECIFICATIONS AND COMPUTER FILES RELATING TO THIS PROJECT ARE THE PROPERTY OF CRABTREE, ROHRBAUGH & ASSOCIATES. CRABTREE ROHRBAUGH & ASSOCIATES RETAINS ALL COMMON LAW, STATUTE AND OTHER RESERVED RIGHTS INCLUDING THE COPYRIGHT THEREIN. REPRODUCTION OF THE MATERIAL HEREIN OR SUBSTANTIAL USE WITHOUT WRITTEN PERMISSION OF CRABTREE, ROHRBAUGH & ASSOCIATES VIOLATES THE COPYRIGHT LAWS OF THE UNITED STATES AND WILL BE SUBJECT TO LEGAL PROSECUTION.  
© CRABTREE, ROHRBAUGH & ASSOCIATES, INC. 2019

REVISIONS

MM-DD-YR	NAME	DESCRIPTION OF CHANGES

**CRABTREE ROHRBAUGH & ASSOCIATES - ARCHITECTS**  
401 EAST WINDING HILL ROAD, MECHANICSBURG PA 17055 717-458-0272 [www.cra-architects.com](http://www.cra-architects.com)  
BALTIMORE, MARYLAND CHARLOTTESVILLE, VIRGINIA WHITE SULPHUR SPRINGS, WEST VIRGINIA

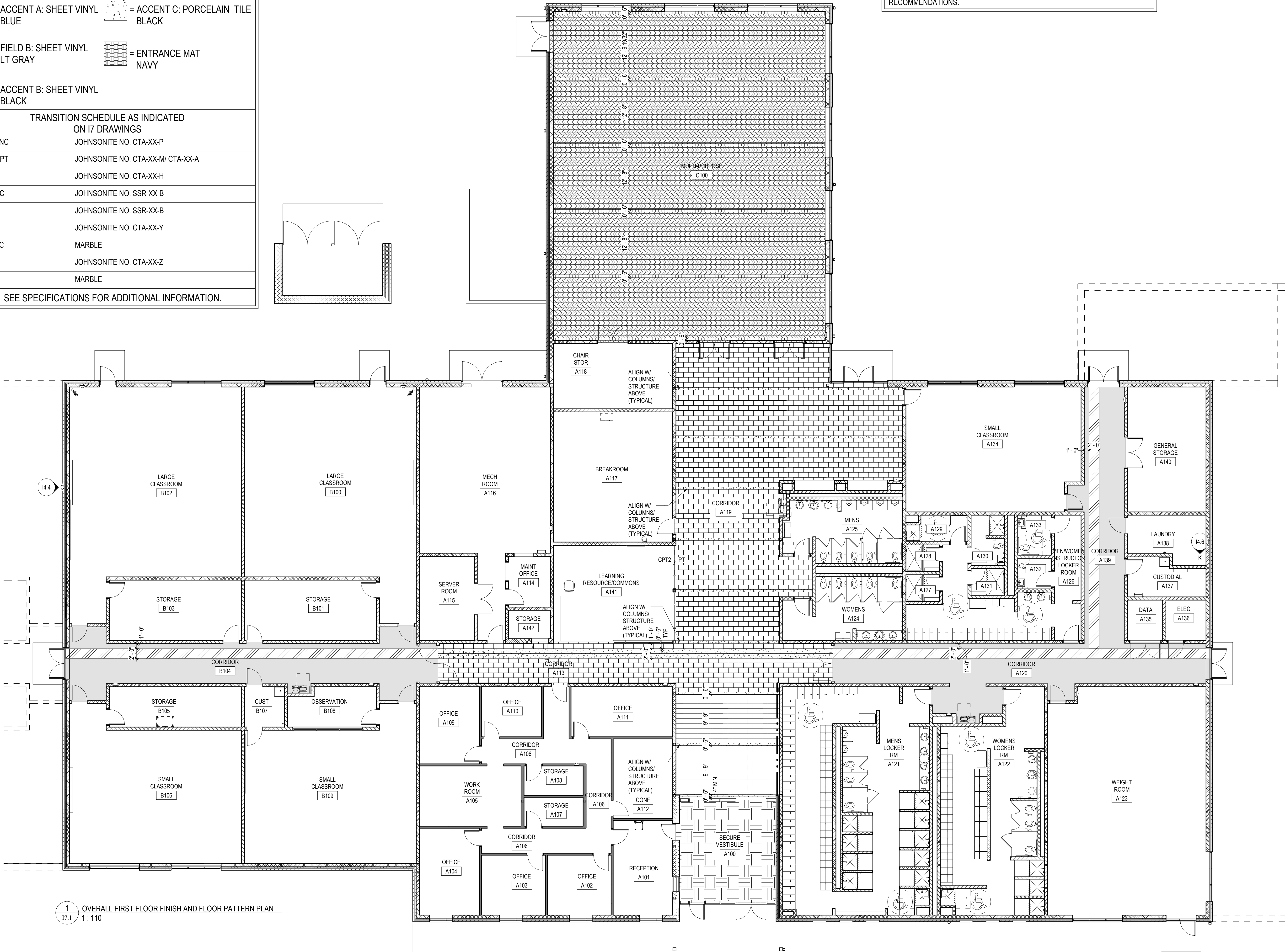
PROPOSED NEW  
**WASHINGTON COUNTY PUBLIC SAFETY TRAINING CENTER**  
WASHINGTON COUNTY PROJECT NO. 28-266



FIRST FLOOR - FLOOR PATTERN PLAN  
PLOT SCALE: 1" = 110'  
FILENAME:  
DATE: DECEMBER 18, 2019

PROJECT 3089

I7.1



1 OVERALL FIRST FLOOR FINISH AND FLOOR PATTERN PLAN  
I7.1 1: 110



[illegible]

WASHINGTON COUNTY PUBLIC SAFETY TRAINING CENTER  
WASHINGTON COUNTY PROJECT NO. 28-266

I7.2

1 OVERALL FIRST FLOOR FINISH PLAN  
2 1 : 110

FIRST FLOOR- FINISH PLAN

PLOT SCALE:

FILENAME:

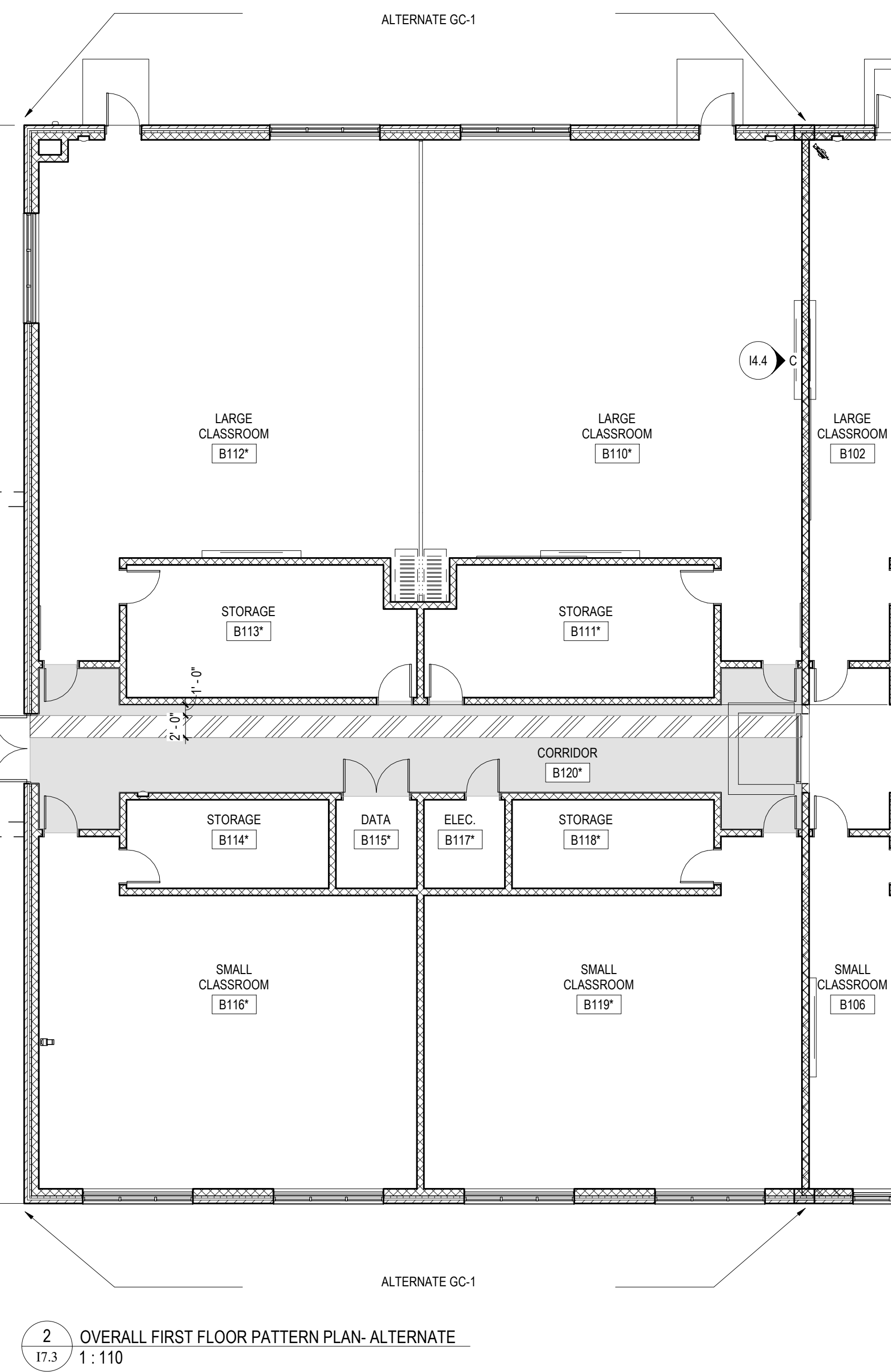
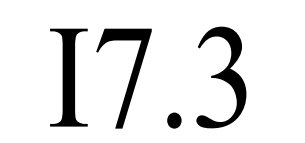
DATE: DEC 1997

DECEMBER 18, 2019



[illegible]

WASHINGTON COUNTY PUBLIC SAFETY TRAINING CENTER  
WASHINGTON COUNTY PROJECT NO. 28-266



1. REFER TO DRAWING I7.1 AND I7.2 FOR FLOOR PATTERN AND FINISH LEGENDS.