

TOGETHER WE RISE

Respond. Recover. Rebuild.
Washington County, MD

Business Town Hall on Outdoor Recreation Activities



Welcome and Introductions

- State and Local Elected Officials
- Various County and City Staff
- Local Health Experts
- Members of COVID-19 Business Response Team:
 - Maryland Department of Commerce Western Maryland Rep – **Andrew Sargent**
 - Washington County, Director of Department of Business Development – **Susan Small**
 - City of Hagerstown, Dir. of Community and Economic Development – **Jill Thompson**
 - President of the Washington County Chamber of Commerce – **Paul Frey**
 - President of the Convention and Visitors Bureau – **Dan Spedden**
 - Executive Director of the Greater Hagerstown Committee – **Jim Kercheval**
 - Chief Executive Officer of Goodwill Industries – **Dave Shuster**

Today's Panelists:

- **Moderator:** Paul Frey, President Washington Co. Chamber of Commerce
- **Special Guest:** Dr. Diana Gaviria, Deputy Health Officer of Washington Co.

Housekeeping and Instructions:

- **Please mute your phone/tablet/computer**
- The presentation is being recorded so that we can share the webinar with those who could not attend.
- The purpose of this webinar is to provide you with up-to-date information, as well as starting guidance and resources to help you reopen in a safe manner.
- There will also be time to answer questions

Housekeeping and Instructions:

- **All Questions will be taken via the chat feature anytime during the webinar. Questions will be answered in the order submitted until our time has ended.**
- **The slide deck and webinar recording will be made available via www.washcorises.net within 24 hours.**
- **This is a public webinar, so please note the press may be joining the call.**

Housekeeping and Instructions:

- While the information provided in the presentation is intended to be accurate, it should not be considered legal advice.
- Businesses should review all state and local policies and guidelines or contact their own legal and professional teams before making business decisions.
- Washington County Government and its affiliates and/or partner organizations cannot be held responsible for any errors or omissions.

Rebuilding Our Economy While While Protecting Public Health...

- Continue Social Distancing and Safe Practices
- Monitor Key Health Statistics
- Prepare Our Businesses to Reopen and Operate Safely
- Provide Businesses Resources and Financial Support
- **Build Confidence** in Consumers, Business Owners, and Employees to Come Back



**We Must All
Take Ownership
and Do Our Part**

Executive Order 20-05-27-01

Outdoor Recreation. The following establishments in the State of Maryland may open to the general public:

- Golf courses and driving ranges
- Outdoor archery and shooting ranges
- Marinas and watercraft rental businesses
- Campgrounds
- Horse boarding and riding facilities
- Drive-in movie theaters
- Outdoor swimming pools
- Outdoor day camps
- Tour boats.

Executive Order 20-05-27-01

- **STAGE ONE** – This Executive Order completed the opening of establishments in “Stage One” of the Governor’s Roadmap To Recovery Plan
 - This order is subject to the discretion of local jurisdiction - They could be more restrictive, but could not be less restrictive and skip to Stage 2
 - **Washington County allowed reopening to the fullest extent allowed under the Executive Order**
- **STAGE TWO** - Governor Hogan noted that health officials will continue to watch the data closely, and if these encouraging trends continue, the state will then be in a position to move into Stage Two of the recovery, which would mean lifting the order on non-essential businesses.

General Best Practices

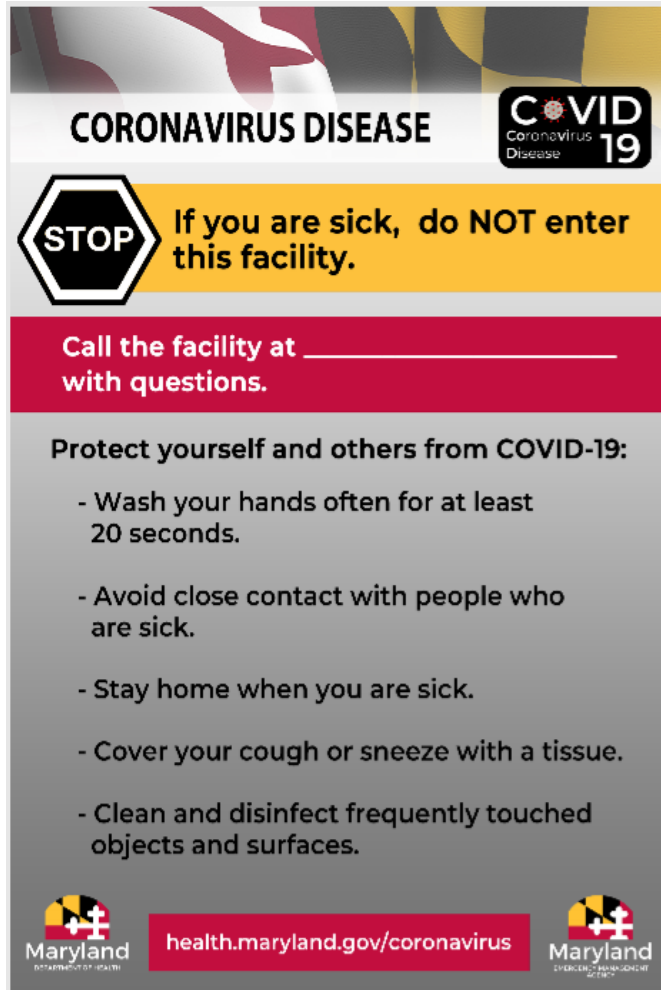
- Prepare your reopening and operating plan according to CDC guidance and OSHA guidance
- Prepare your physical facility for social distancing
- Communicate your COVID-19 policies clearly to everyone, including signage for staff and visitors
- Arrange visitor and employee spacing and traffic to maintain 6-foot separation wherever possible and prevent crowding
- Screen employees for COVID-19 symptoms at start of work
- Be aware of employees with higher risk for severe disease and consider moving them to areas of lower risk
- Clean and disinfect the facility according to CDC guidance
- Ensure that sick leave policies are flexible and consistent with State and Federal law.

Worker Screening

Questions to ask returning workers:

- Have you had ANY of the following symptoms of COVID-19 infection in the last 14 days:
 - Fever or chills; Cough, shortness of breath, or difficulty breathing; Fatigue, muscle or body aches, headache, sore throat, congestion or runny nose, nausea or vomiting, or diarrhea; New loss of taste or smell
 - Is there anyone in your immediate household with COVID-19 infection or have you had close contact (less than 6 feet for at least 15 minutes) with anyone with COVID-19 infection in the past seven (7) days, without the use of personal protective equipment?
 - Have you had a positive test for COVID-19 infection within the past ten (10) days? [If yes, this requires more explanation]
- **Temperature checks are not required, but could be helpful**

Signage



- ❖ Available for download at <https://coronavirus.maryland.gov/pages/business-resources>
- ❖ Also available at www.WashCoRises.net
- ❖ Messages to include:
 - Capacity and/or social distancing requirements
 - Do not enter if ill
 - Facial coverings requirements
 - Hand hygiene, cough hygiene messages

Golf

GOLFING. Golfing may resume following appropriate CDC guidelines including:

- All league, clinic, camps and organized activities will remain suspended
- Congregation areas, such as pro shops, clubhouses, locker rooms, halfway houses, beverage carts remain closed.
- Practice facilities may be open but with social distancing protocols in place.
- Approved pairings may ride in properly sanitized golf carts.
- Groups of four are permitted either walking or single riders in a properly sanitized golf cart (two riders if they are from the same family).
- Frequent cleaning of facilities and carts per CDC Guidelines
- [Guidance and best practices for Golfing](#)

Recreational Boating/Marinas

RECREATIONAL BOATING. Recreational boating may resume following appropriate CDC guidelines including:

- No more than 10 people can be on a boat at one time, including captain and crew.
- Vessel and boat races are authorized so long as no more than 10 people are in a gathering at one time.
- Marinas can reopen to boaters, but must adhere to [best management practices from the Departments of Commerce and Health](#).
- Pump-out stations and boats may resume operations, but must adhere to [best management practices from the Departments of Commerce and Health](#).
- State boat ramps will be open and operational; all ramps must ensure social distancing guidelines.
- All normal boating rules and regulations are in effect and must be followed.

Youth Sports

YOUTH SPORTS. Outdoor youth sports may resume following appropriate CDC guidelines including:

- Limited, low-contact outdoor practices focused on individual skill building versus competition.
- Limited group sizes under 10 people.
- Limited touching of shared equipment and gear.
- The ability to engage in physical distancing while not actively engaged in play.
- [Guidance and best practices for youth sports](#)

Youth Day Camps

YOUTH DAY CAMPS. Outdoor activities at youth day camps may resume under the following guidance:

- Capacity limitation of no more than 10 individuals in a group.
- Daily COVID symptom checks for youth camp staff and campers.
- No out-of-state or overnight campers will be permitted.
- Physical distancing and masks will be required for all staff and campers.
- [Department of Health directives regarding youth camp programs.](#)
[Guidance and best practices for youth day camps.](#)

Outdoor Pools

OUTDOOR POOLS. All outdoor pools may reopen with strict safety guidelines including:

- 25% capacity restrictions.
- Strict physical distancing and sanitization measures.
- Patrons will be required to sign-in and sign-out.
- All pools will be required to post signage warning anyone who is sick not to enter.
- [Department of Health directives regarding swimming pools.](#)
- [Guidance and best practices for outdoor pools.](#)

Camping

CAMPING. Camping may open following appropriate CDC guidelines including:

- Guidance on social distancing must be followed.
- No parties or reservations for more than 10 people will be granted for any one site.

Other Outdoor Activities

HUNTING/TRAPPING/FISHING/HORSEBACK RIDING/OFF ROAD VEHICLES/DRIVE-IN THEATERS - All of these activities may open following appropriate CDC guidelines including:

- Guidance on social distancing must be followed
- No groups more than 10 people in any one party (This includes organized rides)
- All normal state rules and regulations are in effect and must be followed

Q & A

- Please use Chat Function to ask questions or leave feedback
- We will answer as many questions as we can in the time allotted
- We will do our best to prepare FAQ documents on our website for any unanswered questions

www.WashCoRises.net – Your One-Stop-Shop For Reopening Information and Resources

- Preparedness List for reopening
- COVID –19 Business Toolkit
- COVID – 19 Business Resources
- Safety Best Practices by Industry



Now Open – RISE UP Washington County Business Stabilization Grant

- *Up to \$10,000 for Washington Co. businesses with 50 or less employees and under \$5M sales*
- *\$8.9M to be awarded on a first-come, first-served basis*
- *Fill out simple application by June 15th at www.washcorises.net*

Other Resources

❖ Maryland Back to Business:

- <https://open.maryland.gov/backtobusiness/>
- Guidance documents for businesses

❖ MDH COVID-19:

- <https://coronavirus.maryland.gov/>
- COVID-19 stats, FAQs, Resources



Other Resources

❖ Administration's COVID-19 Response:

- <https://governor.maryland.gov/coronavirus/>
- Executive Orders, interpretive guidance, press releases

❖ Governor's May 27th Announcement:

- <https://governor.maryland.gov/2020/05/27/governor-hogan-announces-resumption-of-outdoor-dining-additional-activities-to-complete-stage-one-of-recovery/>
- Executive Orders
- Guidance and Best Practices for Outdoor Restaurants



Thank You!

**TOGETHER
WE RISE**

Respond. Recover. Rebuild.
Washington County, MD

Together We Rise is a Collaboration Between:



Visit www.washcorises.net for more resources.