

RESOLUTION NO. RS-2016-18

**A RESOLUTION TO ADOPT A REVISED COMPREHENSIVE PLAN MAP FOR THE
TOWN GROWTH AREAS OF WASHINGTON COUNTY, MARYLAND
(CP-13-001)**

Recitals

Md. Code, Land Use Article, Section 3-202, provides that the Planning Commission shall make and approve a plan which the Planning Commission shall recommend to the local legislative body, the Board of County Commissioners (the *Board*), for adoption.

The Planning Commission proposed a plan and recommended its adoption to the Board, whereupon the Board adopted the plan on August 27, 2002.

Pursuant to the plan's recommendations concerning the Town Growth Areas (the *TGAs*) of the County, the Planning Commission has recommended a comprehensive rezoning of the *TGAs*, including text amendments to the Zoning Ordinance for Washington County, Maryland; amendments to the Zoning Map for Washington County, Maryland; and adjustments to the Town Growth Areas as shown on the plan's Land Use Map.

The Planning Commission received numerous requests from property owners and citizens for changes to the boundaries of the Town Growth Areas, as well as comments on the proposed map and text amendments. The Planning Commission gave due consideration to all of the testimony received during the public hearings and made numerous changes to its initial proposals. Thereafter, on May 5, 2014, the Planning Commission recommended to the Board the adoption of the boundary adjustments and the map and text amendments. The Planning Commission certified to the Board, pursuant to Md. Code, Land Use

Article, Section 3-202, the approved and recommended Comprehensive Plan map for the TGAs.

The Board after providing the required public notice, conducted a public hearing on May 24, 2016, concerning text amendments to the Zoning Ordinance and map amendments to the Zoning Map. The Board, after providing the required public notice, also conducted a public hearing on October 11, 2016, concerning amendments to the Comprehensive Plan map for the TGAs.

The Board considered all of the recommendations of the Planning Commission and the Planning staff, those public comments received as part of the public meetings/hearings of the Planning Commission and the Board, and also reviewed written correspondence that was submitted concerning the Plan by adjoining planning jurisdictions, municipalities, affected State and local agencies, and interested persons. The Board conducted this review process in sessions open to the public.

The Board finds that this Comprehensive Plan map is made in accordance with the Md. Code, Land Use Article with the general purpose of guiding and accomplishing the coordinated and harmonious development of Washington County, and which will, in accommodating present and future needs, promote the health, safety, morals, order, convenience, prosperity, and general welfare of the County and its citizens.

THEREFORE, IT IS RESOLVED AND ENACTED, THAT the Town Growth Area portions of the Comprehensive Plan's Land Use map is hereby amended and replaced with the boundaries and land use classifications as set forth on the Comprehensive Plan Land Use maps for Boonsboro, Clear Spring, Hancock, and Smithsburg, attached hereto.

Adopted this 11th day of October, 2016.


Effective the 11th day of October, 2016.

ATTEST:

BOARD OF COUNTY
COMMISSIONERS OF WASHINGTON
COUNTY, MARYLAND




Vicki C. Lumm, Clerk

BY: 

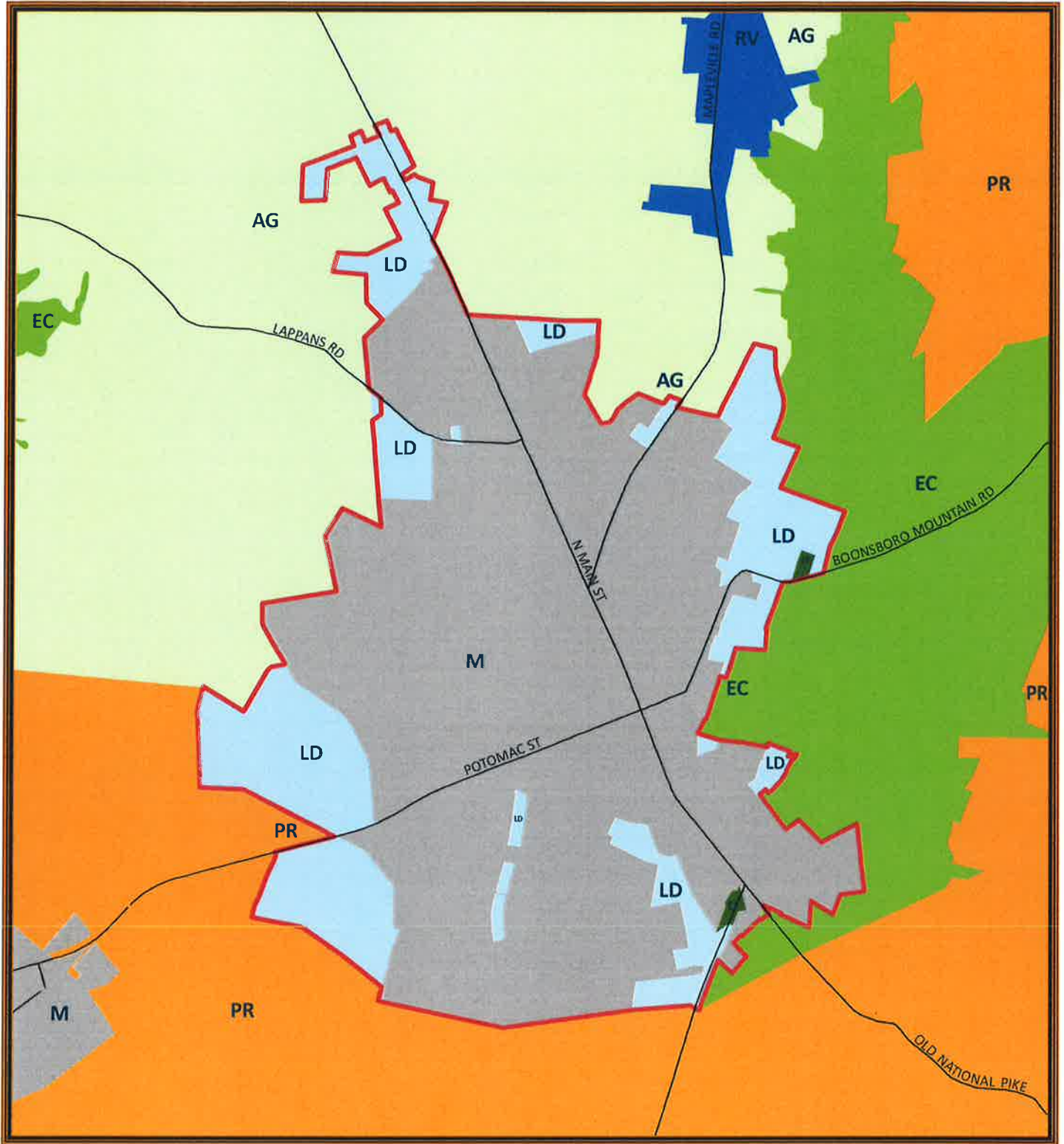
Terry L. Baker, President

Approved as to form and
legal sufficiency:



Kirk C. Downey
Deputy County Attorney

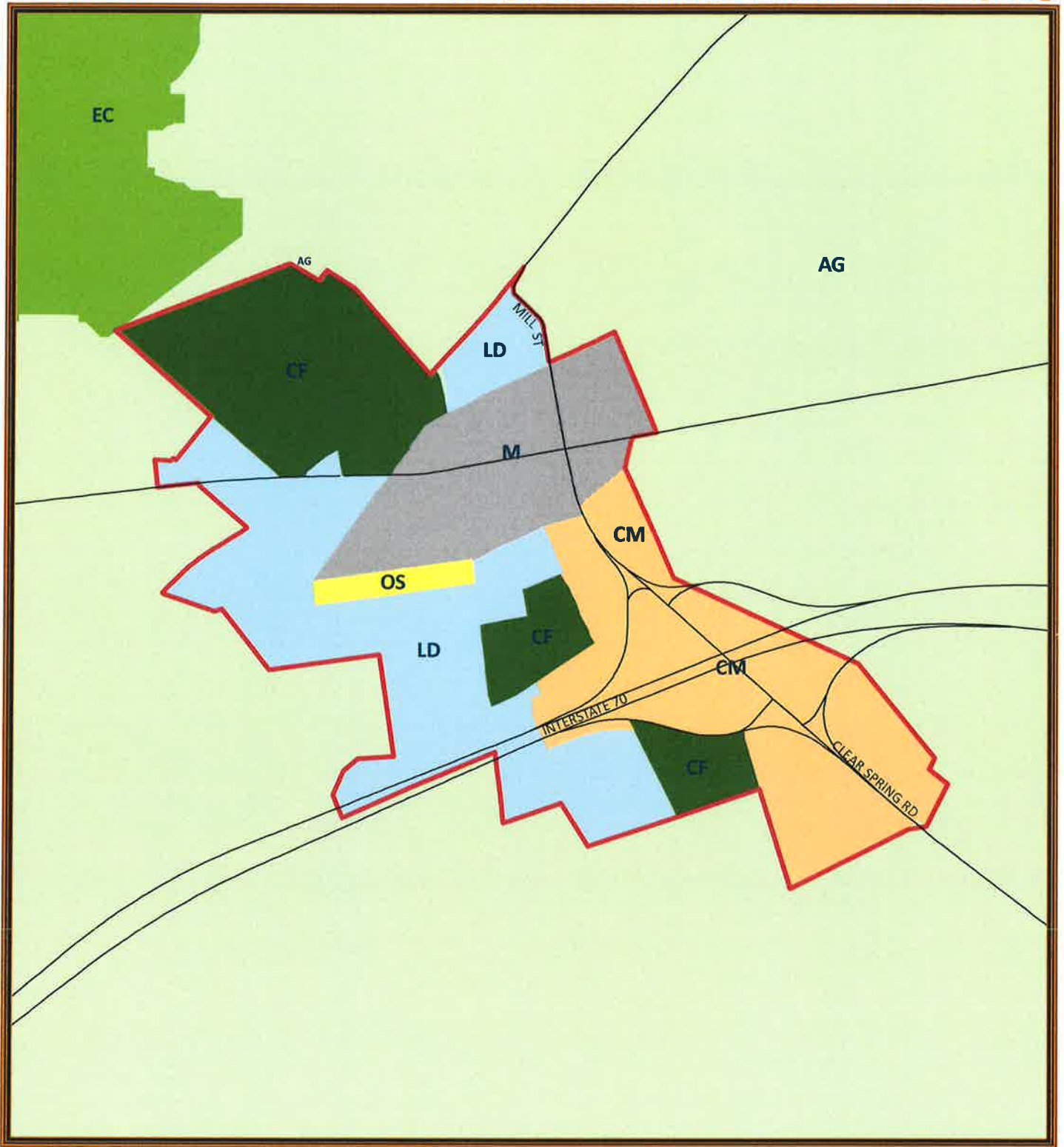
After Recording Return To:
Office of the County Attorney
100 W. Washington St., Rm. 202
Hagerstown, MD 21740



Legend

- Roads
- Proposed Growth Area Boundary
- Low Density Residential
- Community Facilities
- Municipalities
- Rural Village
- Preservation
- Environmental Conservation
- Agriculture

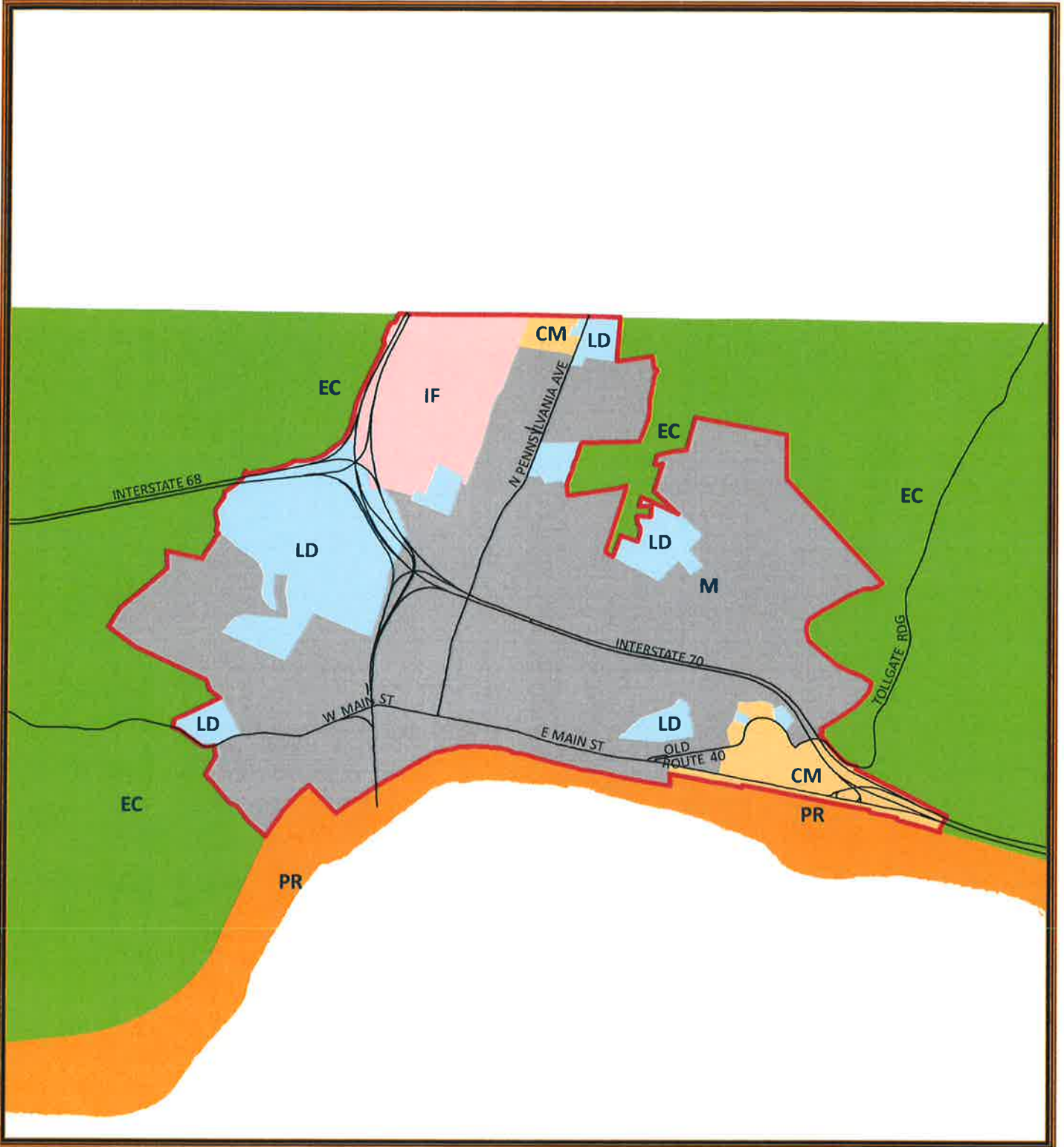




Legend

- Roads
- Commercial
- Community Facilities
- Municipalities
- Agriculture
- Proposed Growth Area Boundary
- Low Density Residential
- Urban Open Space
- Environmental Conservation

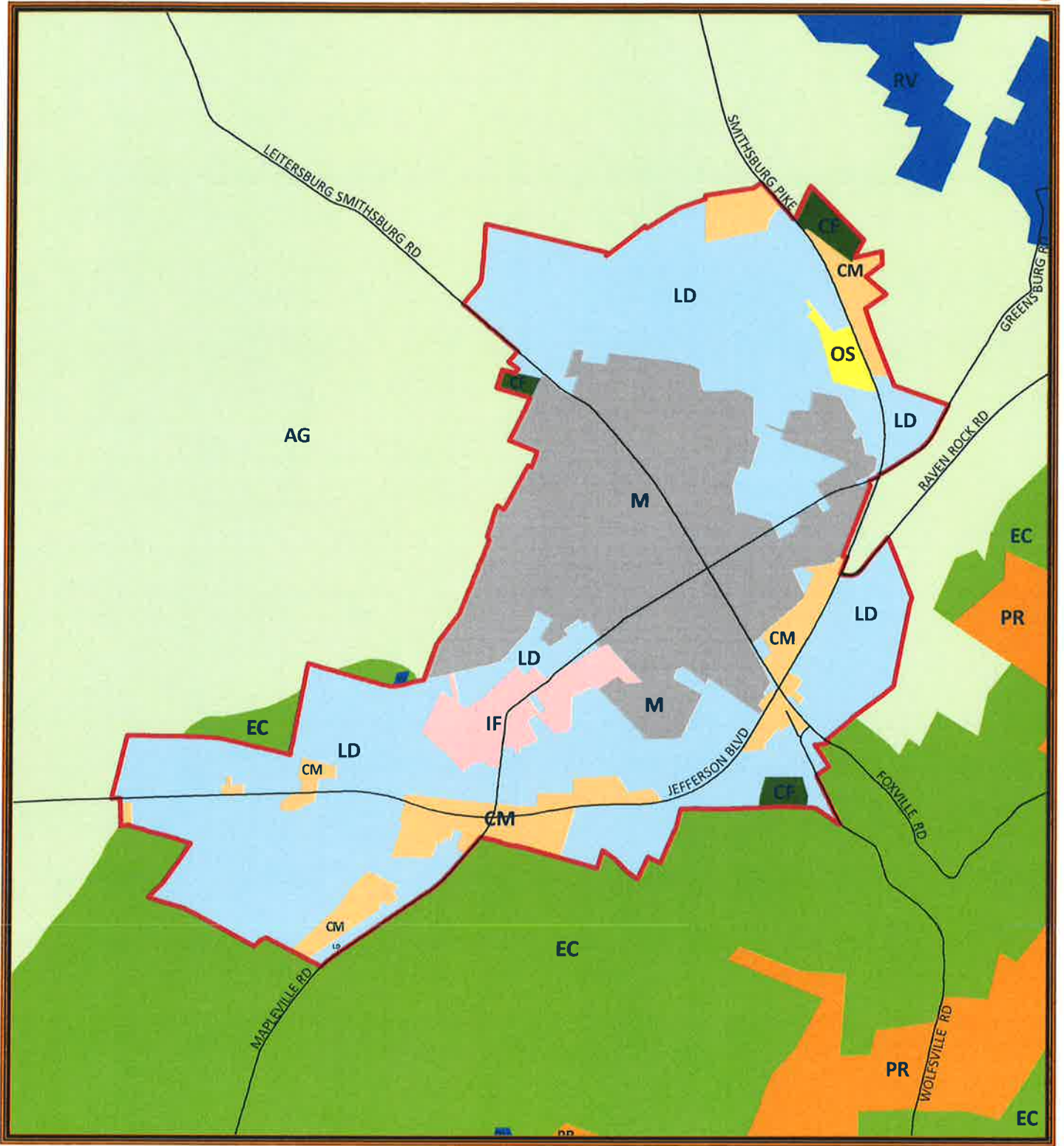




Legend

- Roads
- Proposed Growth Area Boundary
- Industrial / Flex
- Commercial
- Low Density Residential
- Municipalities
- Preservation
- Environmental Conservation





Legend

-  Roads
-  Proposed Growth Area Boundary
-  Industrial / Flex
-  Commercial
-  Low Density Residential
-  Community Facilities
-  Urban Open Space
-  Municipalities
-  Preservation
-  Rural Village
-  Environmental Conservation
-  Agriculture

