



PURCHASING DEPARTMENT  
DIVISION OF BUDGET & FINANCE

PUR-1732  
ADDENDUM NO. 3  
INVITATION TO BID

GRINDER PUMPS

DATE: Friday, March 21, 2025

BIDS DUE: Wednesday, April 2, 2025  
2:00 P.M.(EDT/EST)

To Bidders:

This Addendum is hereby made a part of the Contract Documents on which all bids will be based and is issued to correct and clarify the original documents.

Please acknowledge receipt of this Addendum at the appropriate space on the Proposal Form. This Addendum consists of one (1) page.

**NOTE:** All Bidders must enter the Washington County Administration Complex through either the front door at the 100 West Washington Street entrance or through the rear entrance (w/blue canopy roof) which is handicap accessible and must use the elevator to access the Purchasing Department to submit their bid and/or to attend the Pre-Bid Conference. Alternate routes are controlled by a door access system. The general public will be subject to wand search and will be required to remove any unauthorized items from the building prior to entry. Prohibited items include but are not limited to: Weapons of any type; Firearms, ammunition, and explosive devices; Cutting instruments of any type - including knives, scissors, box cutters, work tools, knitting needles, or anything with a cutting edge, etc.; Pepper spray, mace, or any other chemical defense sprays; and Illegal substances.

**ITEM NO. 1:** Inquiry: Attached is our request for substitution for Bid No. PUR-1732 and cut sheets for the substitutions.

Response: The Franklin Electrics IGP-M Series Grinder Pumps are not considered an "Or Equal" to the Liberty pumps as specified and are not approved by the County as a substitution.

By Authority of:

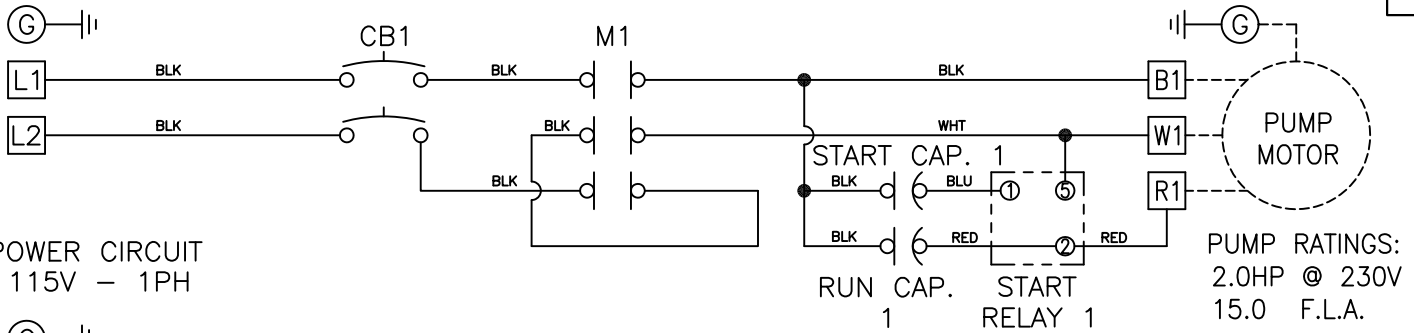
Brandi J. Kentner, CPPO  
Director of Purchasing

*(NOTE: The wording of all "Inquiries" submitted are displayed exactly as received.)*

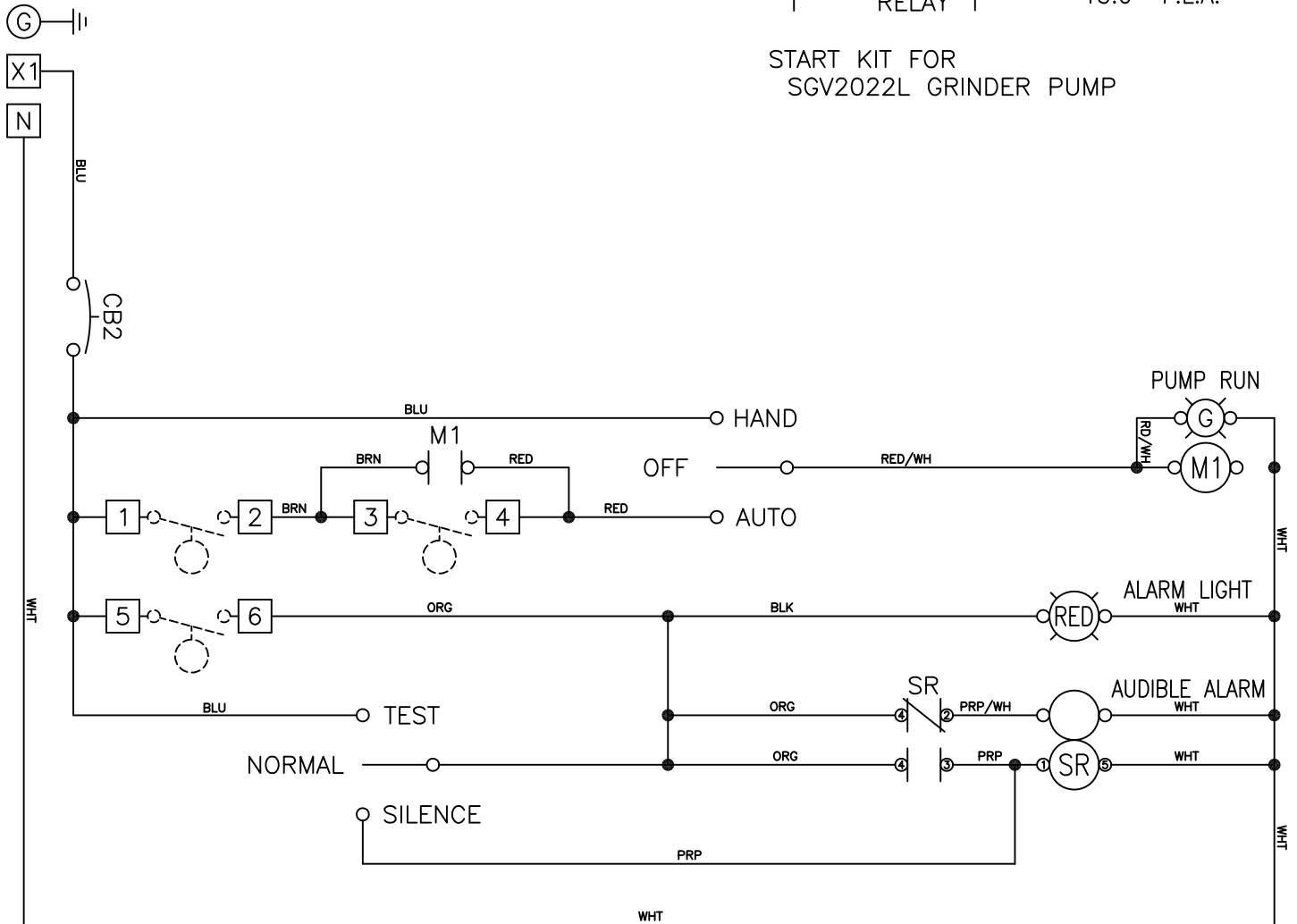
100 West Washington Street, Suite 3200 | Hagerstown, MD 21740-4748 | P: 240.313.2330 | F: 240.313.2331 | Hearing Impaired: 7-1-1

WWW.WASHCO-MD.NET

POWER CIRCUIT  
230V - 1PH



POWER CIRCUIT  
115V - 1PH



NOTES: FLOAT SWITCH TO BE RATED 2 AMP AT 120V MINIMUM.  
MAIN PANEL DISCONNECT MUST BE PROVIDED BY INSTALLER.  
DASHED LINES INDICATE ITEMS NOT CONTAINED IN THE PANEL.  
REQUIRED TORQUE FOR TERMINAL BLOCK SCREWS IS 16 in-lbs.  
FIELD WIRING MUST BE A MINIMUM OF 60°C COPPER WIRE.



CHANGES	TOLERANCES	DRAWN BY	DATE
F	DECIMALS	C. BARRICK	10/7/2013
E	.XXX = ±.005	MATERIAL SPECIFICATION:  AS NOTED	
D	.XX = ±.010		
C	FRACTIONAL		
B	X/X = ±.1/64		
A	ANGLES		
	X° = ±1/2°		

SCHEMATIC, ELECTRICAL

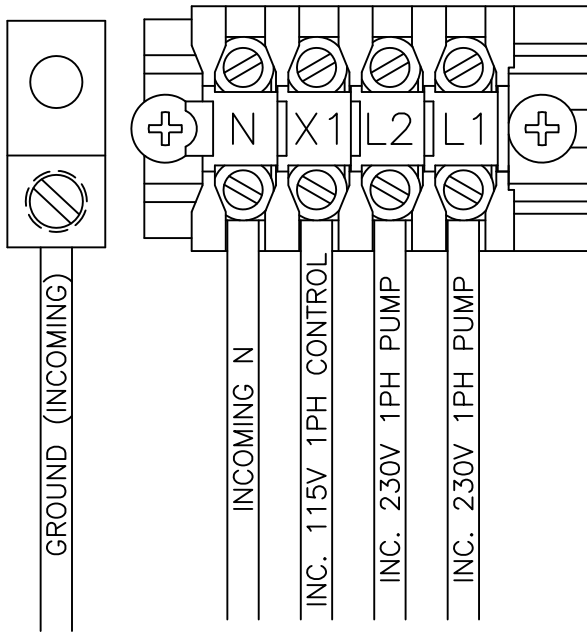
SCALE: PART NO.

FULL

50A700

MODEL NO.

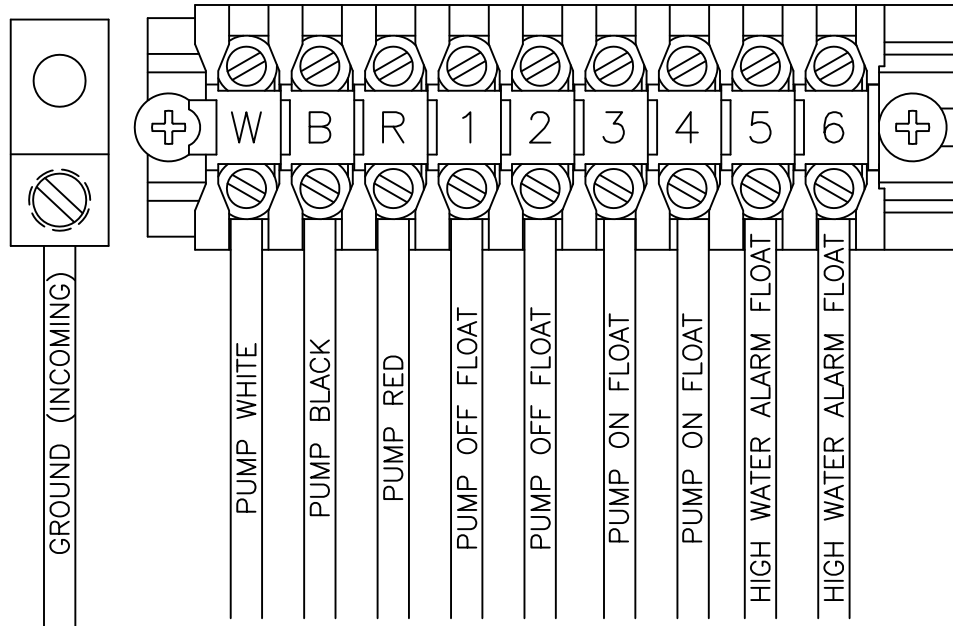
C20-SGV2022L



## INCOMING POWER CONNECTION

## PUMP & FLOAT CONNECTIONS

TIGHTENING TORQUE FOR TERMINAL BLOCK IS 16 in-lbs.



CHANGES		TOLERANCES	DRAWN BY	DATE	POWER CONNECTION DIAGRAM SIMPLEX(230V)	
F		DECIMALS .XXX = ±.005 .XX = ±.010  FRACTIONAL X/X = ±.1/64  ANGLES X° = ±1/2°	C. BARRICK	10/7/2013	SCALE: PART NO.  FULL 50A700	
E			MATERIAL SPECIFICATION:  AS NOTED			
D						
C						
B						
A						

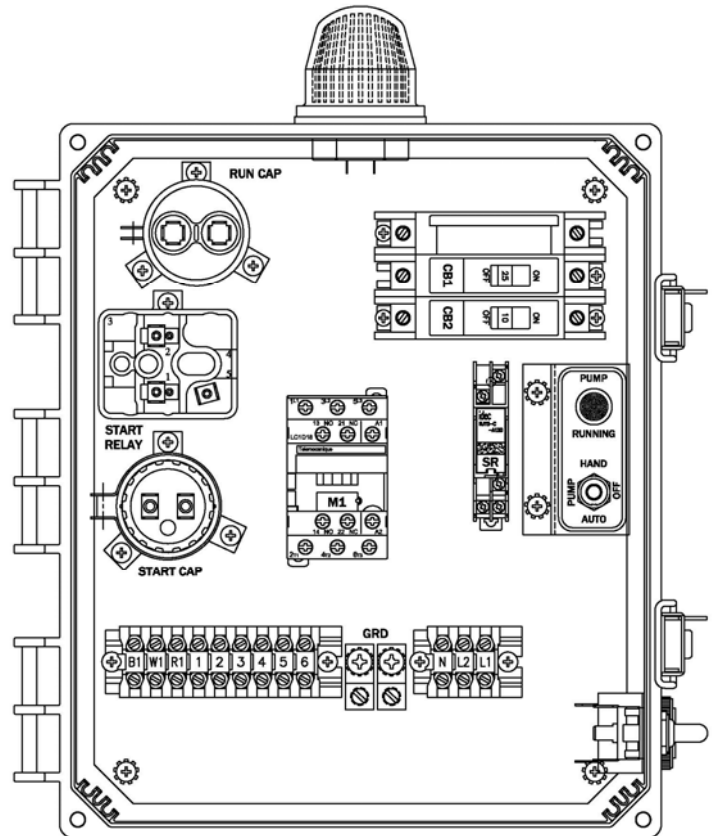


## CONTROL PANEL

### **“50A700” Simplex Grinder Pump Control Panel**

#### **Features & Benefits**

- Circuit Breaker for Pump Circuit
- Definite Purpose Motor Contactor
- Easy to Access Terminal Block
- Single & Three Phase Available
- Start Component Included on Single Phase (Start & Run Capacitor, Start Relay)\*
- Externally Mounted Test/Normal/Silence Switch w/UV Resistant Sealing Boot
- Externally Mounted Audible Alarm
- Pump Hand-Off-Auto Switch
- Pump Running Light
- Large External Alarm Light
- Control & Alarm Circuit Breaker
- Ground Lugs
- Color Coded Internal Wiring
- Rugged Weather Resistant Hinged Poly Enclosure w/Sst Latches
- Built and Labeled to UL 508A Standard w/Nema 4x Rating
- Provided with Wiring Schematic and Detailed Connection Diagram for Installer
- Mounting Feet for Enclosure



(Standard 50A700 Shown)

#### **Available Options(\*)**

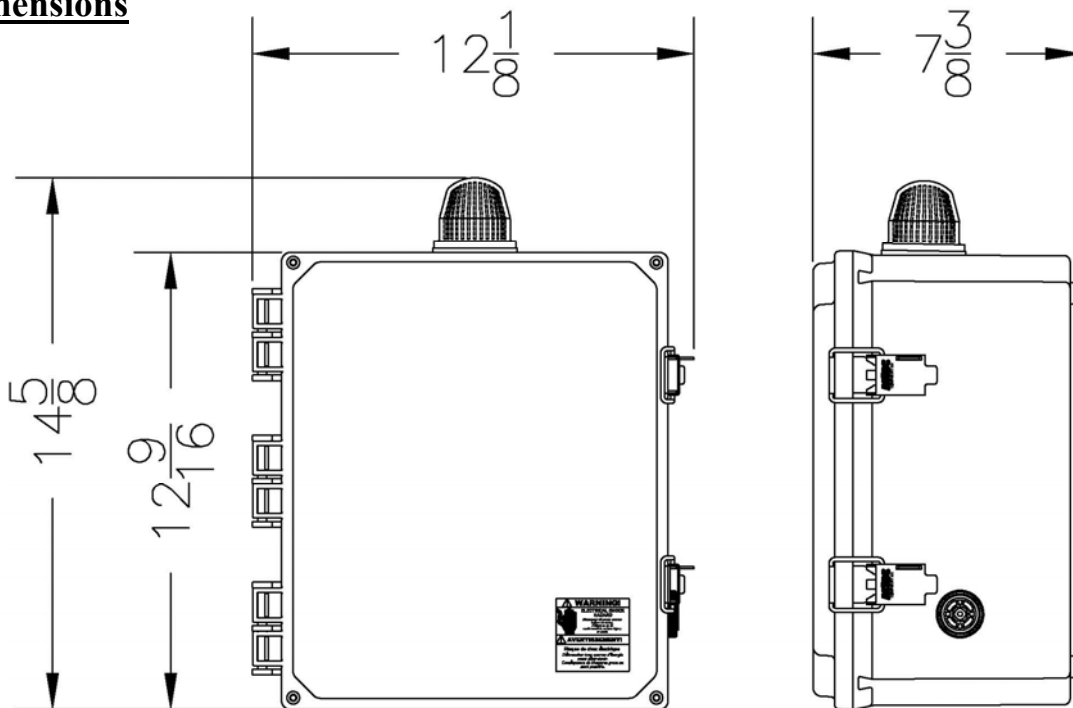
- Fiberglass Enclosure
- Seal Leak Detection Circuitry
- Heat Sensor Connections
- IEC Motor Contactor with Overload
- Flasher
- Dead Front Inner Door
- Auxiliary Alarm Contacts
- Elapsed Timer Meters or Cycle Counters
- Mercury or Mechanical Float Switches for the Pumps and High Water Alarm Circuits



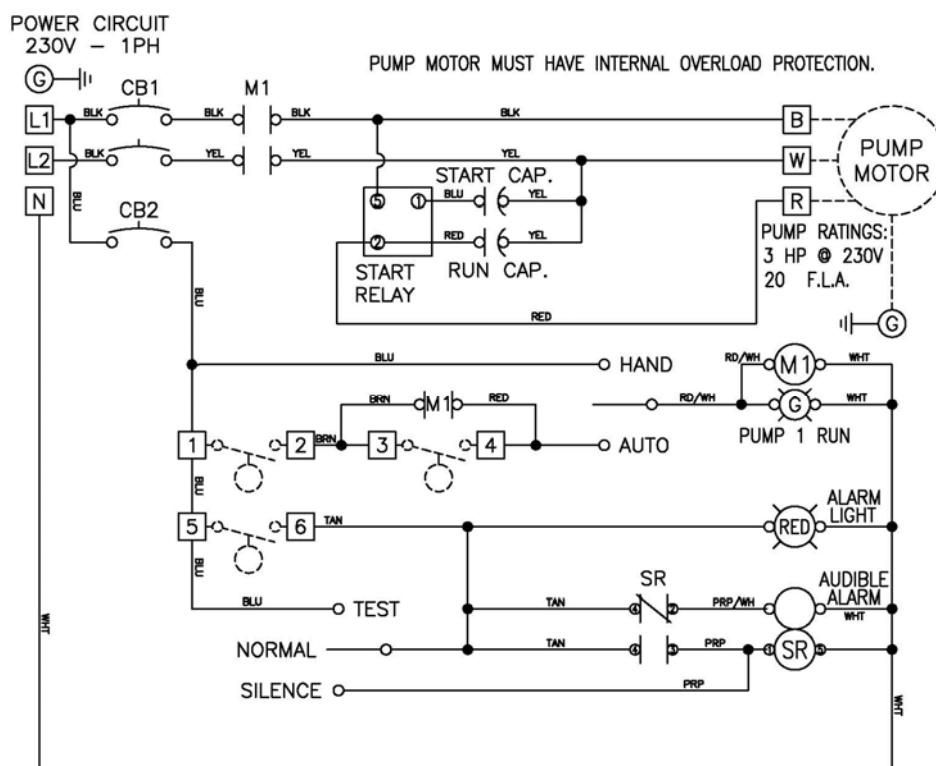
\*Note: Consult the factory for other available options. Also, some options may require an increase in the enclosure size. On single phase units the pump model, cord configuration, and the start kit information are required

## “50A700” Simplex Grinder Pump Control Panel

### Panel Dimensions



### Panel Schematic



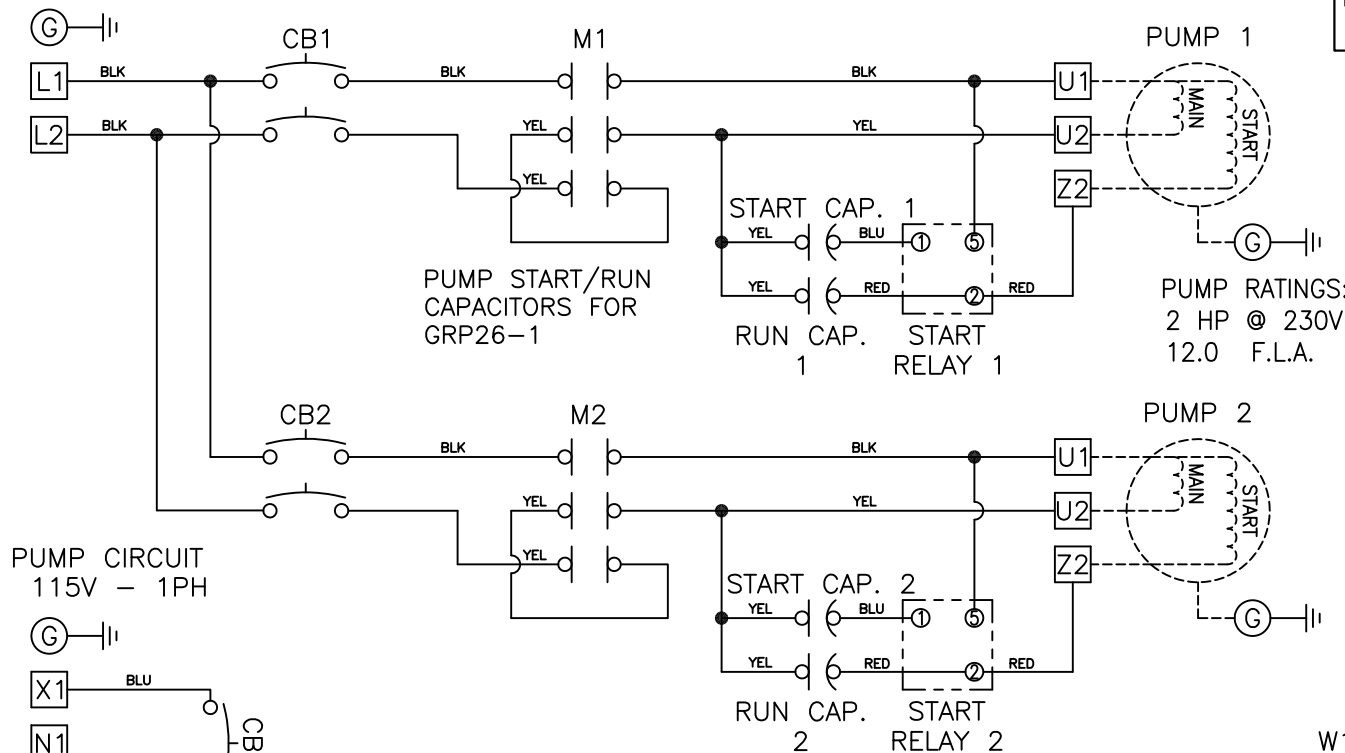
PUMP MOTORS MUST HAVE INTERNAL OVERLOAD PROTECTION.

MODEL NO.

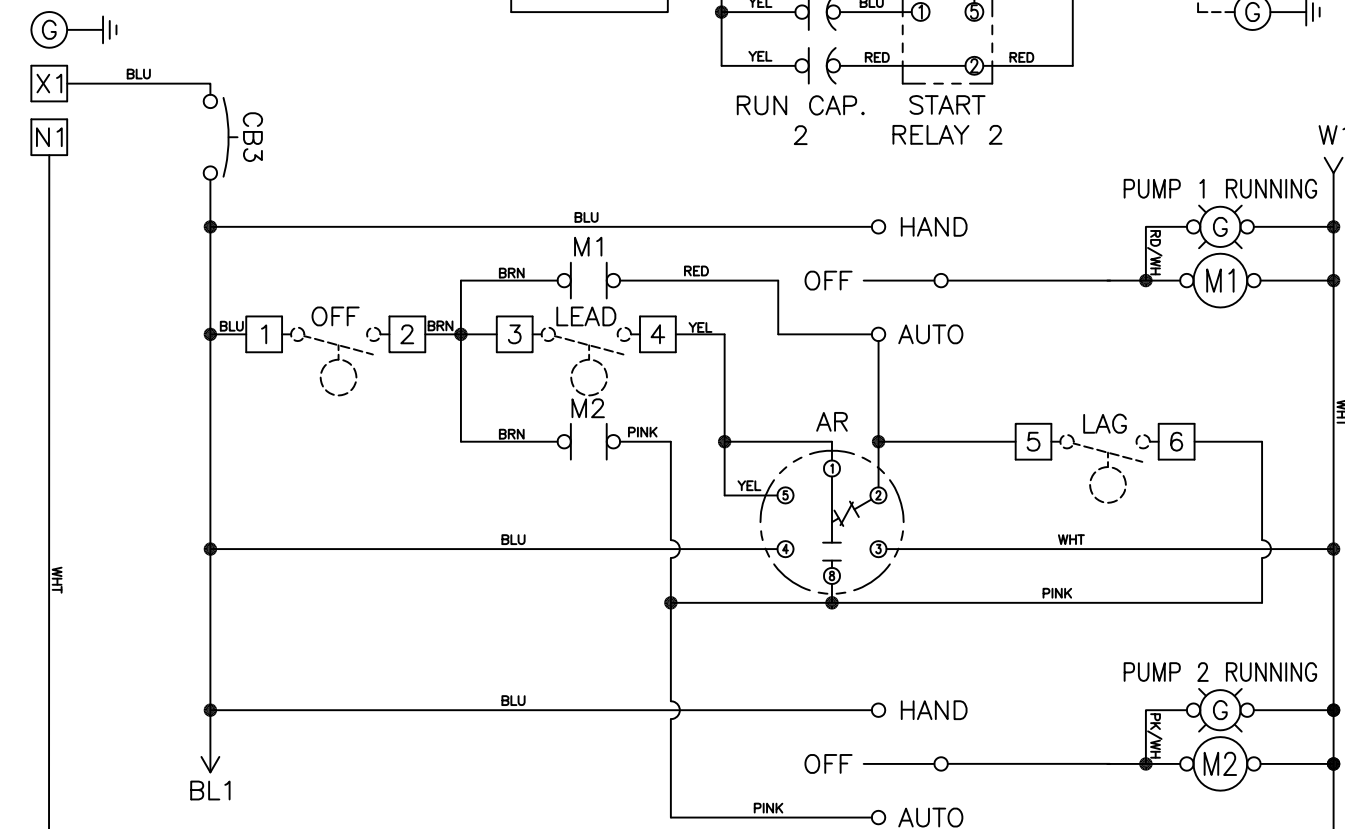
C20-GRP261

PAGE  
1

PUMP CIRCUIT  
230V - 1PH



PUMP CIRCUIT  
115V - 1PH



NOTE: FLOAT SWITCH TO BE RATED 2 AMP AT 120V MINIMUM. MAIN PANEL DISCONNECT MUST BE PROVIDED BY INSTALLER. DASHED LINES INDICATE ITEMS NOT CONTAIN IN THE PANEL. FIELD WIRING MUST BE A MINIMUM OF 60°C COPPER WIRE. REQUIRED TORQUE FOR TERMINAL BLOCK SCREWS IS 16 in-lbs. TO PRESERVE ENVIRONMENTAL RATING OF PANEL, USE FITTINGS AND HUBS WITH SAME ENVIRONMENTAL RATING AS ENCLOSURE.

!!IMPORTANT! - THIS PANEL CONTAINS CAPACITORS BE SURE TO DISCHARGE CAPACITORS, BEFORE SERVICING. FAILURE TO DO SO MAY RESULT IN DEATH OR SERIOUS INJURY.



CHANGES	TOLERANCES
F	DECIMALS
E	.XXX = ±.005
D	.XX = ±.010
C	FRACTIONAL
B	x/x = ±.1/64
A	ANGLES
	x° = ±1/2°

CHANGES	TOLERANCES
F	DECIMALS
E	.XXX = ±.005
D	.XX = ±.010
C	FRACTIONAL
B	x/x = ±.1/64
A	ANGLES
	x° = ±1/2°

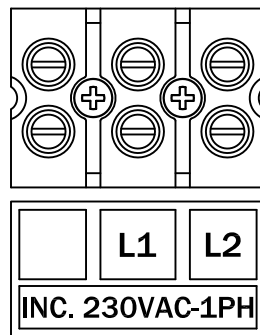
DRAWN BY	DATE
C. BARRICK	6/21/2019
MATERIAL SPECIFICATION:	
AS NOTED	

SCHEMATIC, ELECTRICAL

SCALE: PART NO.

FULL

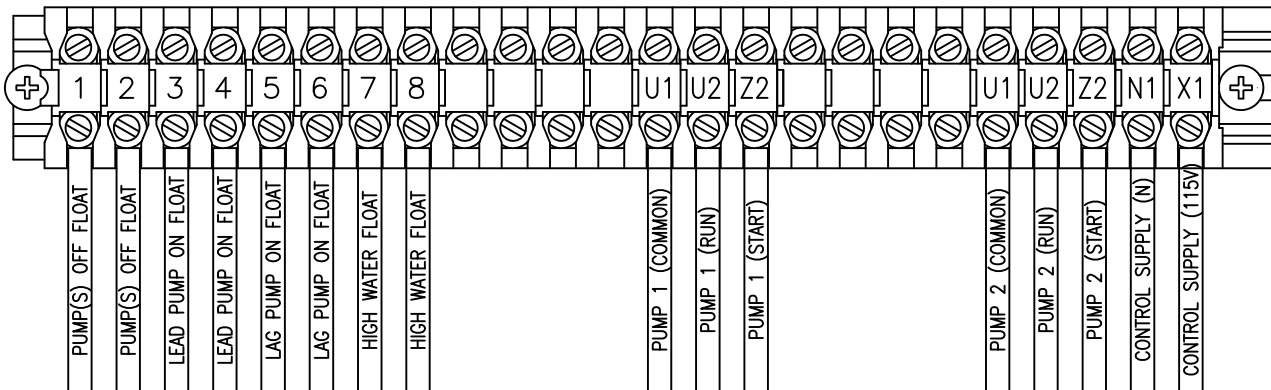
50A750



INCOMING POWER  
TIGHTENING TORQUE FOR TERMINAL  
BLOCK IS 16 in-lbs.

## PUMP & CONTROL CONNECTIONS

TIGHTENING TORQUE FOR TERMINAL BLOCK IS 16 in-lbs.



CHANGES		TOLERANCES	DRAWN BY	DATE	SCHEMATIC, ELECTRICAL	
F		DECIMALS .XXX = $\pm .005$	C. BARRICK	6/21/2019		
E		.XX = $\pm .010$	MATERIAL SPECIFICATION:  AS NOTED		SCALE: PART NO. FULL 50A750	
D		FRACTIONAL				
C		X/X = $\pm .1/64$				
B		ANGLES				
A		X' = $\pm 1/2'$				

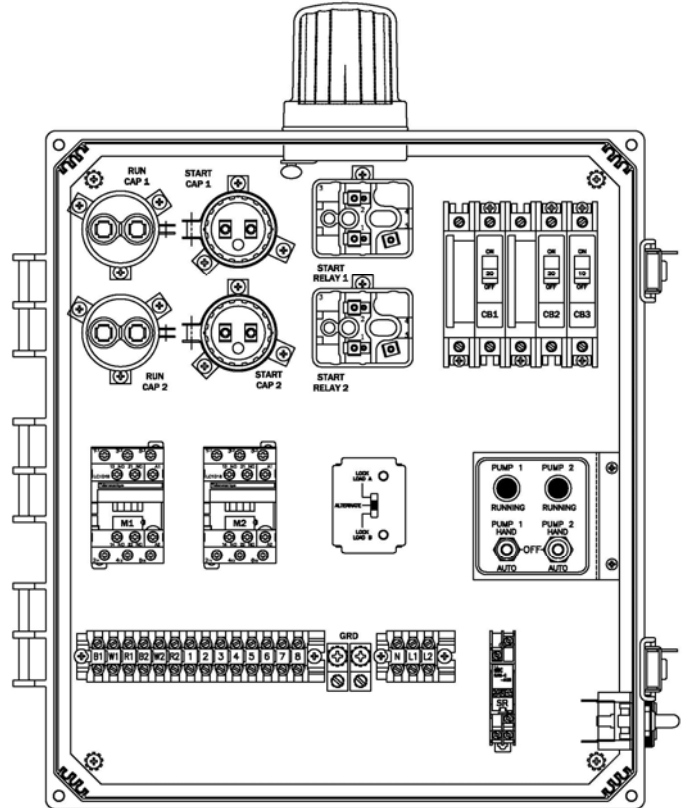


## CONTROL PANEL

### **“50A750” Duplex Grinder Pump Control Panel**

#### **Features & Benefits**

- Circuit Breaker for Pump Circuit
- Definite Purpose Motor Contactor
- Easy to Access Terminal Block
- Single & Three Phase Available
- Start Component Included on Single Phase (Start & Run Capacitor, Start Relay)\*
- Externally Mounted Test/Normal/Silence Switch w/UV Resistant Sealing Boot
- Externally Mounted Audible Alarm
- Pump Hand-Off-Auto Switch
- Pump Running Light
- Large External Alarm Light
- Control & Alarm Circuit Breaker
- Ground Lugs
- Color Coded Internal Wiring
- Rugged Weather Resistant Hinged Poly Enclosure w/Sst Latches
- Built and Labeled to UL 508A Standard w/Nema 4x Rating
- Provided with Wiring Schematic and Detailed Connection Diagram for Installer
- Mounting Feet for Enclosure



(Standard 50A750 Shown)

#### **Available Options(\*)**

- Fiberglass Enclosure
- Seal Leak Detection Circuitry
- Heat Sensor Connections
- IEC Motor Contactors with Overloads
- Flasher
- Dead Front Inner Door
- Auxiliary Alarm Contacts
- Elapsed Timer Meters or Cycle Counters
- Mercury or Mechanical Float Switches for the Pumps and High Water Alarm Circuits

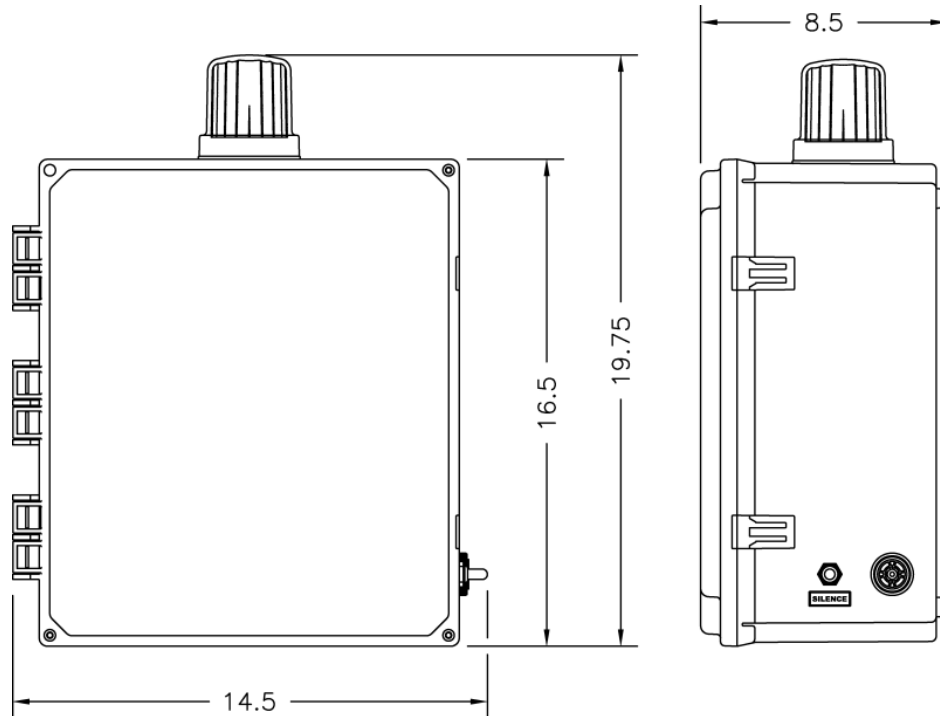


\*Note: Consult the factory for other available options. Also, some options may require an increase in the enclosure size. On single phase units, the pump model, cord configuration, and the start kit information are required

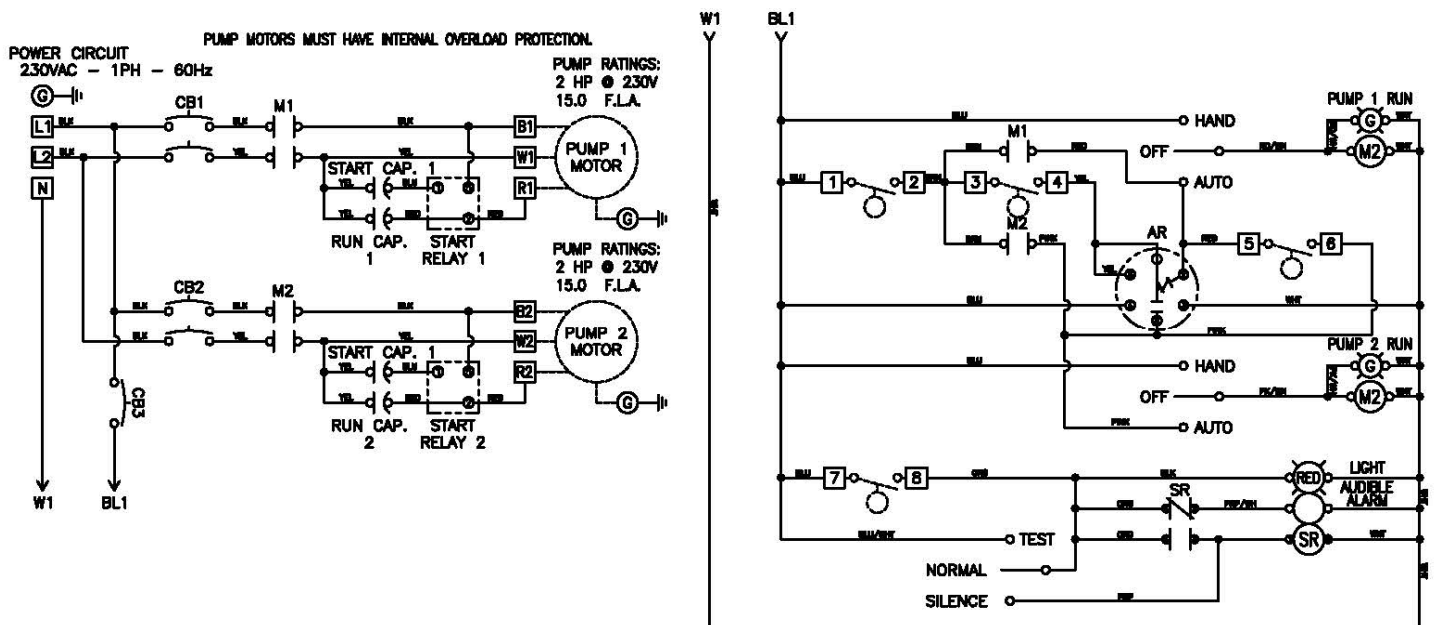


## "50A750" Duplex Grinder Pump Control Panel

### Panel Dimensions



### Panel Schematic



## IGP-M SERIES

### APPLICATIONS

Franklin Electric's IGP-M Series grinder pumps are ideal for the toughest residential and commercial wastewater applications, ranging from sewage lift stations to low pressure sewer systems used with housing developments, lake communities or anywhere high vertical lift or long force mains are present

### FEATURES

- Powerful 2 hp, 3450 rpm motor to handle the demands of grinding domestic sewage
- Externally-mounted start components\*
- Carbon/Ceramic mechanical seal
- Deflection-resistant, short motor shaft
- Corrosion-resistant brass impeller minimizes downtime and maintenance
- Seven-vane, angled face, non-clogging, balanced impeller
- Tight cutting clearances for superior grinding at 414,000 cuts per minute
- Epoxy-coated finish for corrosion resistance and durability
- Built-in overload protection prevents over-current and over-temperature damage

\*The IGP Manual Series requires a specific control panel or capacitor kit from FPS, matched to the pump for proper operation and third-party approval.

### MODEL INFORMATION

Item No.	Model	HP	Volts	Hz	Phase	Full Load Amps/Watts	Cord
515864*	IGP-M231-15	2	208-230	60	1	13.9/3200	15'
515879	IGP-M231-30	2	208-230	60	1	13.9/3200	30'
515870	IGP-M233-30	2	208-230	60	3	10/1300	30'
515871	IGP-M463-30	2	460	60	3	4.5/1025	30'

\*Does not include leg kit

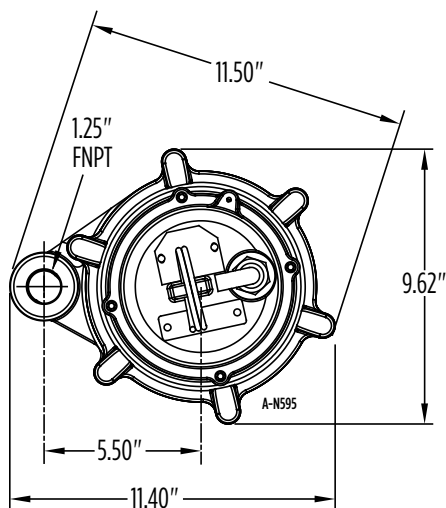
Performance (GPM @ Head)						Shut-Off	PSI	Weight (lbs)
20'	40'	60'	80'	100'	120'			
32	31	30	25	20	10	130'	56	75



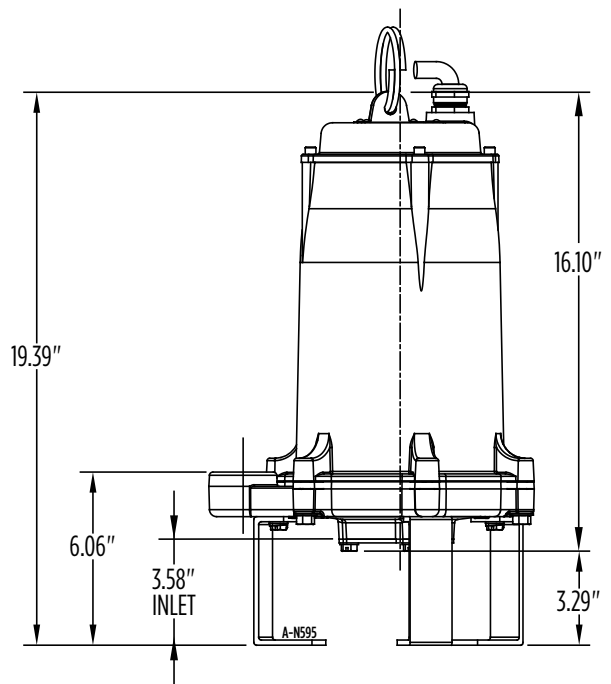
(U.S. Patent No. 7,237,736)

## IGP-M SERIES

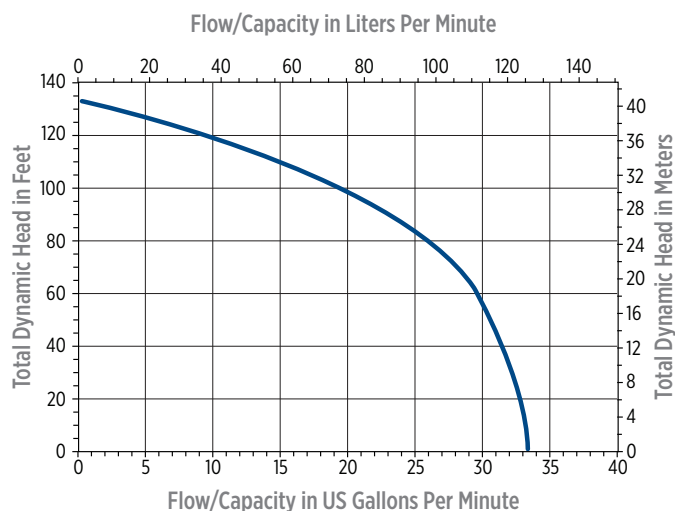
### DIMENSIONS



Shown with optional leg kit (599078)



### PERFORMANCE



### CONSTRUCTION

<b>Discharge</b>	1.25" Vertical FNPT
<b>Motor Cover</b>	Cast iron with epoxy coating
<b>Motor Cover O-ring</b>	Nitrile
<b>Motor Design</b>	Single-phase, capacitor start, capacitor run or three-phase
<b>Insulation Class</b>	F
<b>Overload Protection</b>	Internal, on winding thermal protector
<b>Motor Shaft</b>	*AISI 300 series stainless steel
<b>Ball Bearing-Upper</b>	Single row ball, 6203
<b>Ball Bearing-Lower</b>	Single row ball, 6306
<b>Seal Housing</b>	Cast iron with epoxy coating
<b>Mechanical Seal</b>	Carbon/Ceramic
<b>Volute</b>	Cast iron with epoxy coating
<b>Impeller</b>	Brass
<b>Rotating Cutter</b>	AISI 440C stainless steel, through-hardened to Rockwell 55-60C
<b>Stationary Cutter</b>	AISI 440C stainless steel, hardened to Rockwell 55-60C
<b>External Hardware</b>	300 series stainless steel
<b>Power Cable</b>	Type SOW-A or SOW 14/4 AWG

\* In contact with fluid pumped

## IGP SERIES RETROFIT KITS

### APPLICATIONS

Direct simplex replacement grinder for positive displacement grinder systems

### FEATURES

- Fast, lightweight, and easy installation
- Epoxy-coated steel cover
- Electrical connections made in dry top housing come standard for simplified installation
- 1-1/4" cast iron anti-siphon/check valve
- 1-1/4" NPT piping
- Adjustable alarm float switch preset at factory
- 2 hp 3450 rpm automatic grinder pump with mechanical float switch
- Quick disconnect plug
- Rigid construction for ease of handling

### MODEL INFORMATION

Item No.	Model	Volts	Hz	Phase	Full Load Amps/Watts	Plug	Total Height (A)	Cover Depth (B)
515805	IGP-A-RFKS	208-230	60	1	13.9/3200	Black	44.15	31.89
515806	IGP-A-RFKS				13.9/3200	Gray	44.15	31.89

Model	Performance (GPM @ Head)							Shut-Off	PSI	Weight (lbs)
	40'	60'	80'	100'	120'	150'	175'			
IGP-A-RFKS	31	30	25	20	10	-	-	130'	56	123

### ACCESSORIES

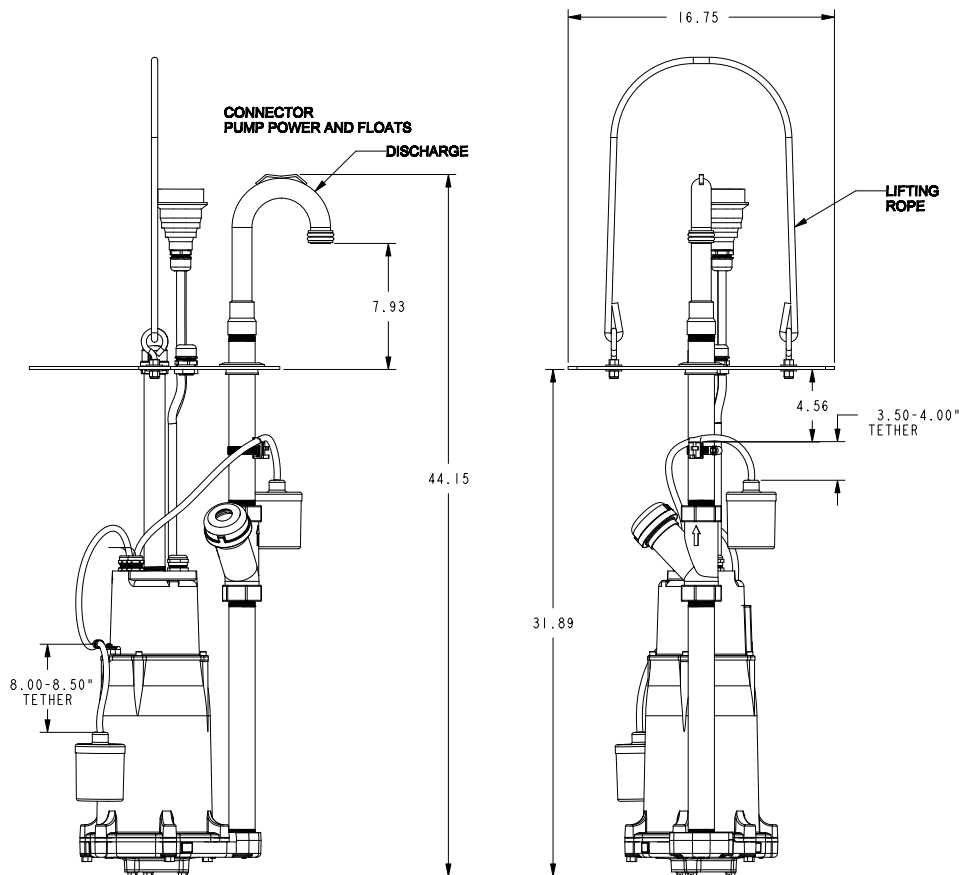
Item No.	Description
115156	Adapter Harness, 1 ft (Gray Female Plug to Black Male Plug)
115159	Adapter Harness, 1 ft (Black Female Plug to Gray Male Plug)



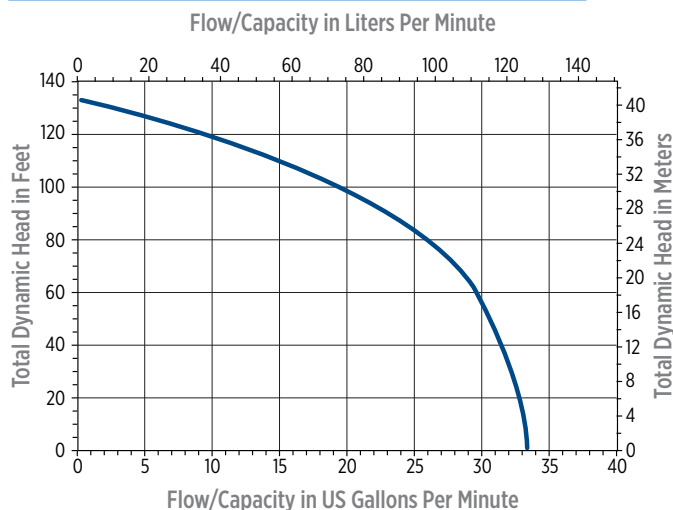
Adapter Harness

## IGP SERIES RETROFIT KITS

### DIMENSIONS



### PERFORMANCE



### CONSTRUCTION

<b>Discharge</b>	1.25" Vertical
<b>Motor Cover</b>	Cast iron with epoxy coating
<b>Motor Cover O-Ring</b>	Nitrile
<b>Motor Design</b>	Single-phase, capacitor start, capacitor run
<b>Insulation Class</b>	F
<b>Overload Protection</b>	Internal, on winding thermal protector
<b>Motor Shaft</b>	AISI 300 Series stainless steel
<b>Ball Bearing-Upper</b>	Single row ball, 6203
<b>Ball Bearing-Lower</b>	Single row ball, 6306
<b>Seal Housing</b>	Cast iron with epoxy coating
<b>Mechanical Seal</b>	Carbon/ceramic
<b>Volute</b>	Cast iron with epoxy coating
<b>Impeller</b>	Brass
<b>Rotating Cutter</b>	AISI 440C stainless steel, through-hardened to Rockwell 55-60C
<b>Stationary Cutter</b>	AISI 440C stainless steel, hardened to Rockwell 55-60C
<b>External Hardware</b>	300 Series stainless steel
<b>Power Cable</b>	Type SOOW/or SOW 14/6 AWG