

# Business and Economic Development Update

**May 7, 2025**



**Washington County**

**M A R Y L A N D**

# Opening Remarks

The Washington County Department of Business and Economic Development (DBED) continued its mission to create and foster a thriving economic environment that supports job growth, business expansion, and community investment. Through our strategic partnerships, targeted programs, and innovative tools such as the Foreign Trade Zone #255, the department drove measurable outcomes that strengthened the County's position as a competitive and business friendly destination.

## 2024 Snapshot

- Achieved record setting return on investment!
  - \$8.81 for every \$1 invested in DBED
- Directly facilitated \$264,850,000 in new investments
- Supported the creation and retention of 1,340 jobs
- Assisted 32 new and expanding businesses



# Warehouse Update

## There are only 2 empty warehouses in Washington County!

- Creekside Logistics – Huyett’s Crossroads
- Hagerstown Crossroads at I-81 – Wright Road

## The warehouses were built due to strategic importance:

- The government does not control private industry – land use via zoning are only controls
- Most U.S. logistics demand is insulated from trade shocks – 75% of logistics real estate demand is tied to regional distribution and local consumption
- International trade-oriented markets are highly concentrated
  - Savannah, GA, Memphis, TN, Ports of Southern CA and NJ are highly exposed
- Uncertainty, not particularly tariffs themselves, are delaying decision making until clarity emerges
  - Developers and brokers are seeing requests for more short-term and flexible leasing options
- Short-term measures are driving demand for flexible solutions. Companies are pursuing overflow space, third party logistics (3PL) assistance and Foreign Trade Zones (FTZ) as stopgap tools to navigate volatility



\*Source: Prologis Research. U.S. Customs and Border Protection. U.S. Bureau of Economic Analysis\*

# Warehouse Update

Top Tax Paying Industries in WashCo:	1-YR Tax Collected	% of Top 20 Taxpayers
Warehouse/Logistic/Distribution	\$7,519,552	63.2%
Property Management	\$1,692,805	14.2%
Manufacturing	\$624,071	5.2%
AC&T Fulton Empire	\$530,020	4.5%
Convention Center/Bar/Restaurant	\$518,188	4.4%
Retail	\$352,862	3.0%
Technology	\$335,478	2.8%
Apartment Complex	\$326,912	2.7%





# WHAT IS ECONOMIC DEVELOPMENT?

# Who We Are

We are the “Department of Business and Economic Development”!

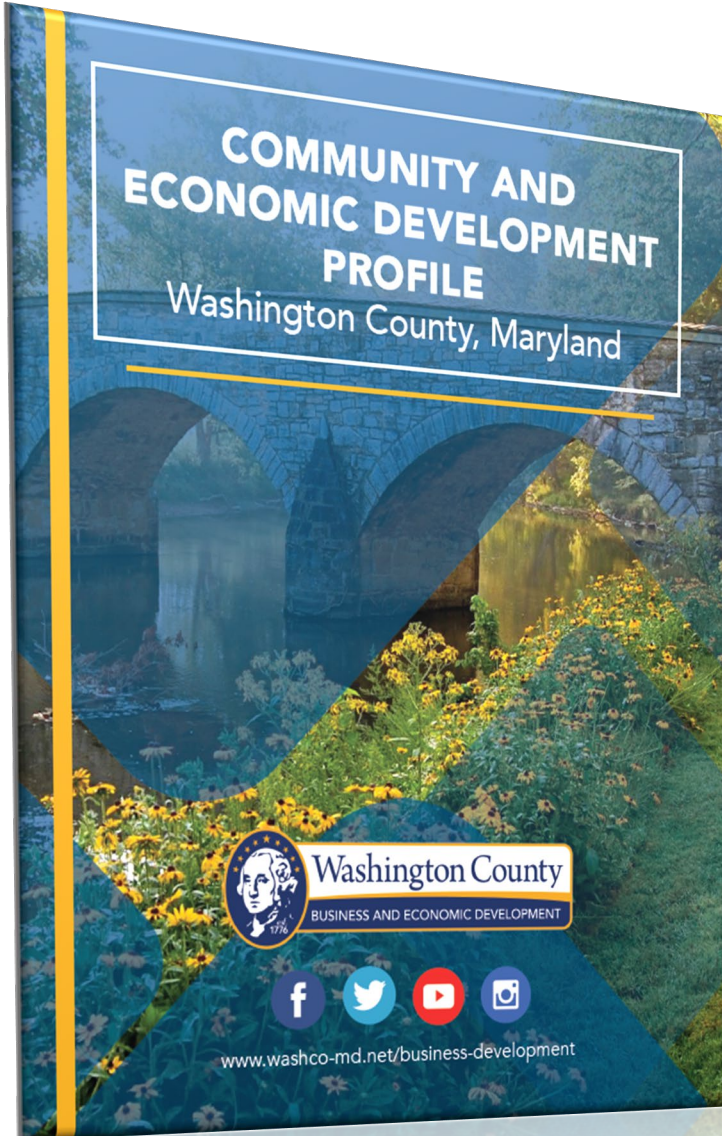
*Economic development is programs, policies and activities that seek to improve the economic well-being and quality of life for a community by creating and retaining jobs and providing a stable tax base.*

Three main structures for EDOs – Economic Development Organizations

Full Governmental | Quasi-governmental | Private 501(c)



# What We Do



## MAIN STRATEGIES

- ☐ Business Retention and Expansion (BRE)
- ☐ Marketing & Attraction
- ☐ Entrepreneurial Support
- ☐ Industry Sector Support

## SERVICES PROVIDED

- ☐ Site Selection Assistance
- ☐ Attraction and stabilization financial support programs
- ☐ Business scaling and startup planning
- ☐ Workforce development programs
- ☐ Data gathering/compilation/analysis
- ☐ Connections – industry, peers, leadership, utilities, zoning, permitting
- ☐ Community Partnership Liaison

# Community Partners



## Municipal EDOs





# Outside Partners



Tri County Council  
*For Western Maryland*







Washington County

M A R Y L A N D

# COMMUNITY PROFILE

## Washington County's Economy is Strong, Diverse and Stable

- Low Unemployment Rate
  - 3.5% as of January 2025
- 3,622 Jobs Added
- Known New Investments of \$1.79 billion
- Vibrant Towns
  - Revitalization of Fort Ritchie/Cascade



*Currwood Logistics Center*

- 700 Jobs
- \$150 million Invested
- Partnership with Webstaurant Store - 1.2M sq. ft. lease



Students from the University of Maryland present their Fort Ritchie Livable Community Concepts at Fort Ritchie.

# Major Employers

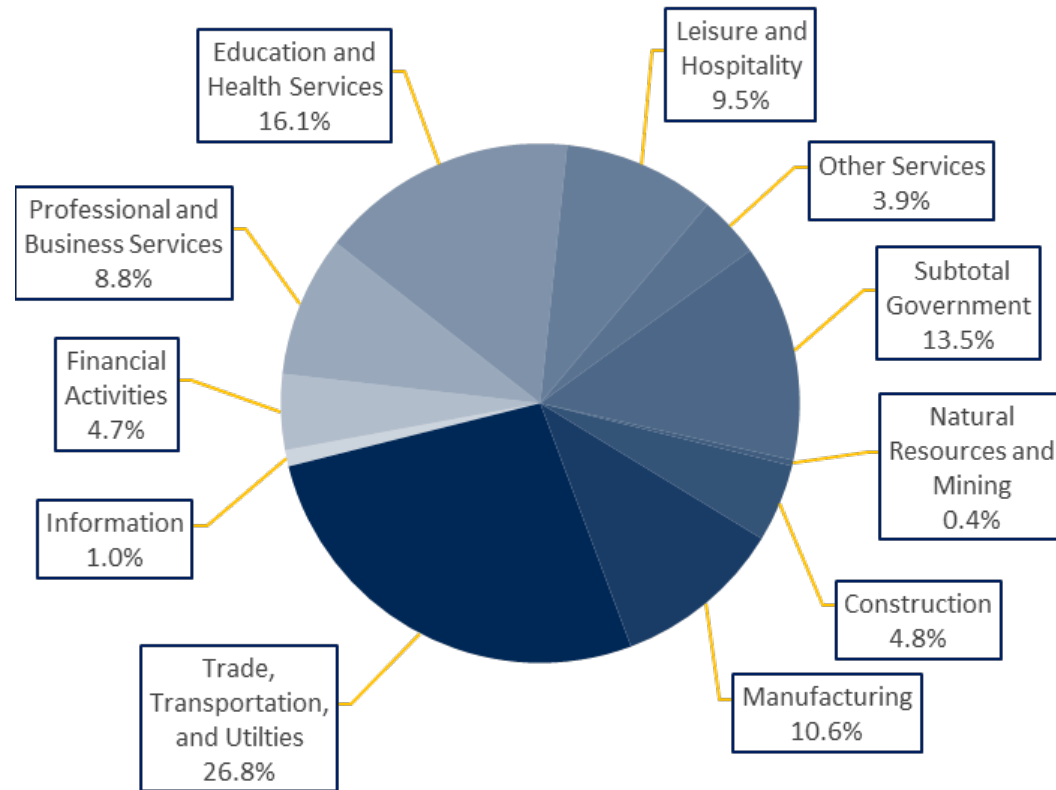
6,000+ Businesses



2025 Top 10 Employers	
Washington County Public Schools	3,705
FedEx Ground	2,654
Meritus Health	2,590
State of Maryland	1,855
Volvo Group	1,836
WashCo Government	1,418
Amazon	1,200
FiServ	993
Bowman	861
Hagerstown Community College	700

# Major Employers

## CATEGORIES

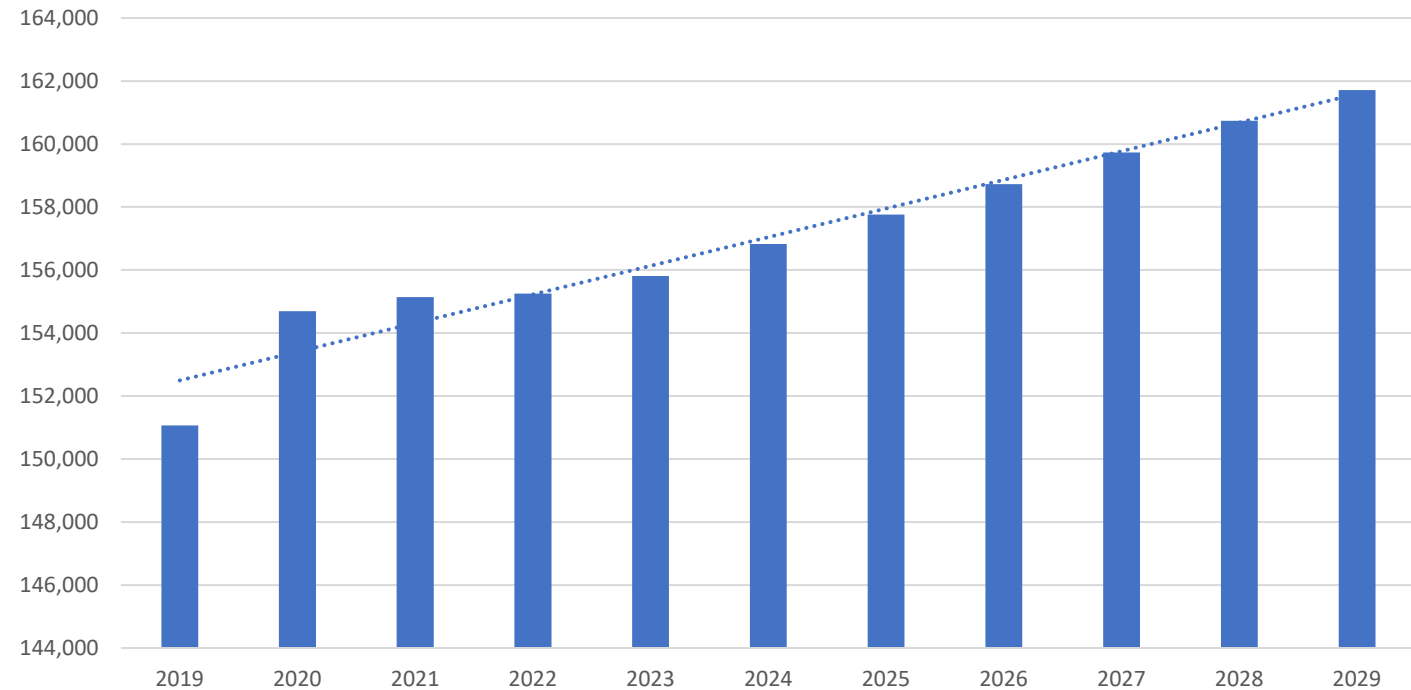


Industry	Estab- lishments	Annual Avg Empl	Empl %	Avg Wkly Wage
Federal Government	40	608	1.0%	\$ 1,812
State Government	14	1,751	2.8%	1,744
Local Government	66	6,102	9.8%	1,108
Subtotal Government	120	8,461	13.5%	1,287
<i>Private Sector</i>				
Natural Resources and Mining	37	232	0.4%	1,164
Construction	327	3,031	4.8%	1,160
Manufacturing	144	6,617	10.6%	1,392
Trade, Transportation, and Utilities	890	16,747	26.8%	883
Information	44	637	1.0%	1,388
Financial Activities	315	2,950	4.7%	1,410
Professional and Business Services	561	5,500	8.8%	1,079
Education and Health Services	467	10,044	16.1%	1,218
Leisure and Hospitality	398	5,932	9.5%	465
Other Services	301	2,415	3.9%	803
Subtotal Private Sector	3,484	54,105	86.5%	1,029
Total	3,604	62,566		\$ 1,064

# Population

- Population is 156,826 (2024)
  - Increased by 3.8% since 2019, growing by 5,760
  - Population is expected to increase by 3.1% between 2024 and 2029, adding 4,886
- Average annual population growth rate
  - 2010-2020 was 0.5%
  - Ranked 10<sup>th</sup> in population growth in Maryland
- Foreign born population has increased by 20.8% from 2019-2023

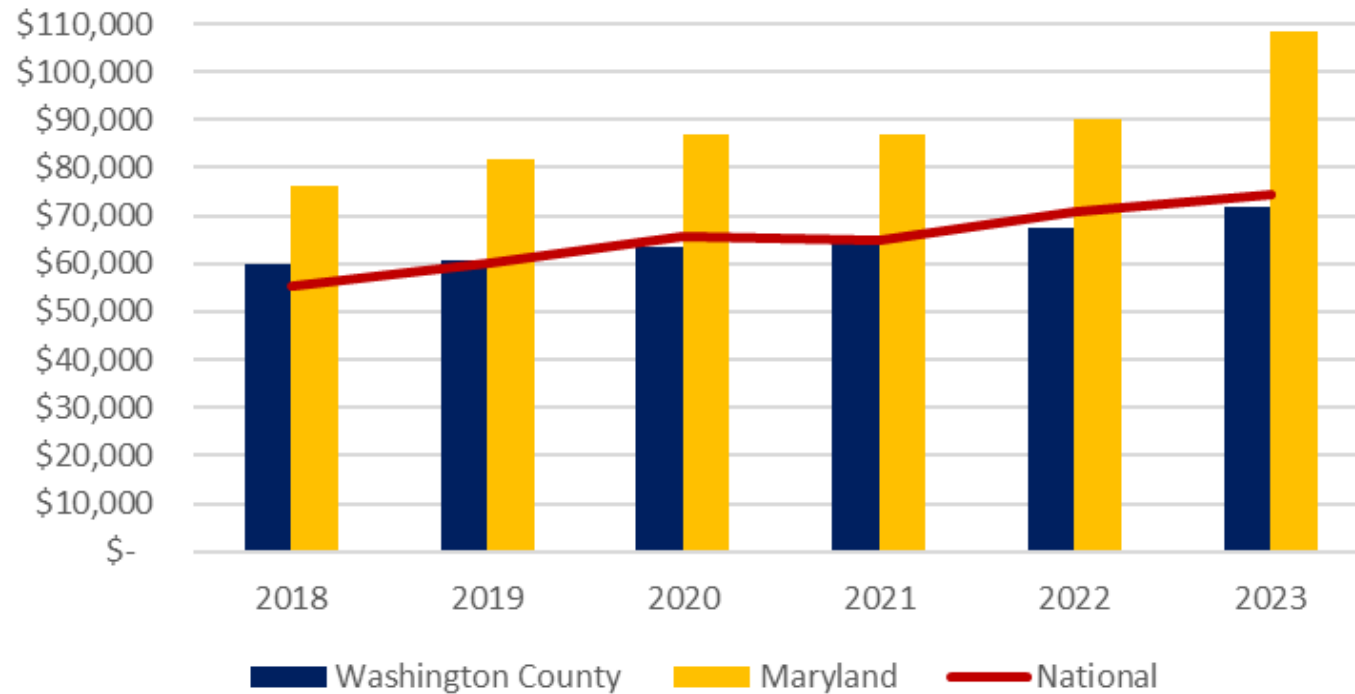
Washington County, MD Population Trend





# Household Income

Median Household Income

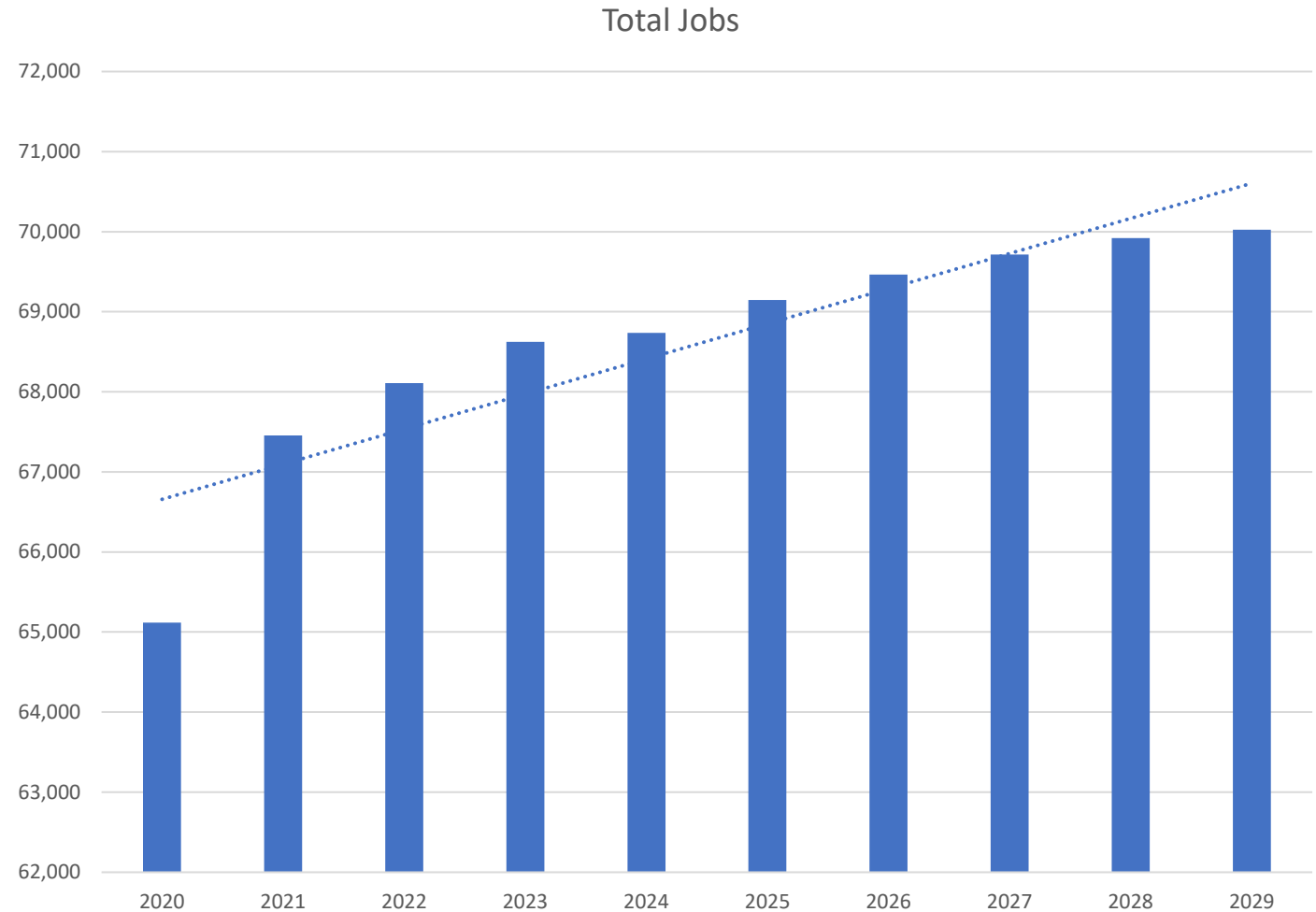


- \$71,685 in 2023
  - 30% less than Maryland's Median Household Income of \$102,000
  - An increase of 6% over 2022



# Jobs

- 2024 Total Jobs: 68,737
- 2024 Private Sector Jobs: 59,314
  - 86% of employment base in 2023 and 2024 is private sector
- From 2020-2029:
  - The number of jobs increased 5.2% from 2020-2024
  - Predicted to increase 1.9% from 2024 to 2029



# Job Posting Analytics

## Job Posting Overview

15,681 Unique posting of Jobs in  
Washington County

### Top Industries

- General Medical and Surgical Hospitals
- Supermarkets and Other Grocery Retailers
- Truck, Utility trailer, Warehouse
- Pharmacies and Drug Retailers
- Home Health Care services
- General Management

### Top Companies Hiring

- Meritus Medical
- Wal\*Mart
- Sierra Nevada Corportation
- Volvo
- HCC
- Washington County Public Schools

\$32.68/hr  
median  
advertised  
salary

# Job Posting Analytics

## Job Titles/Occupations

### Top Posted Occupations

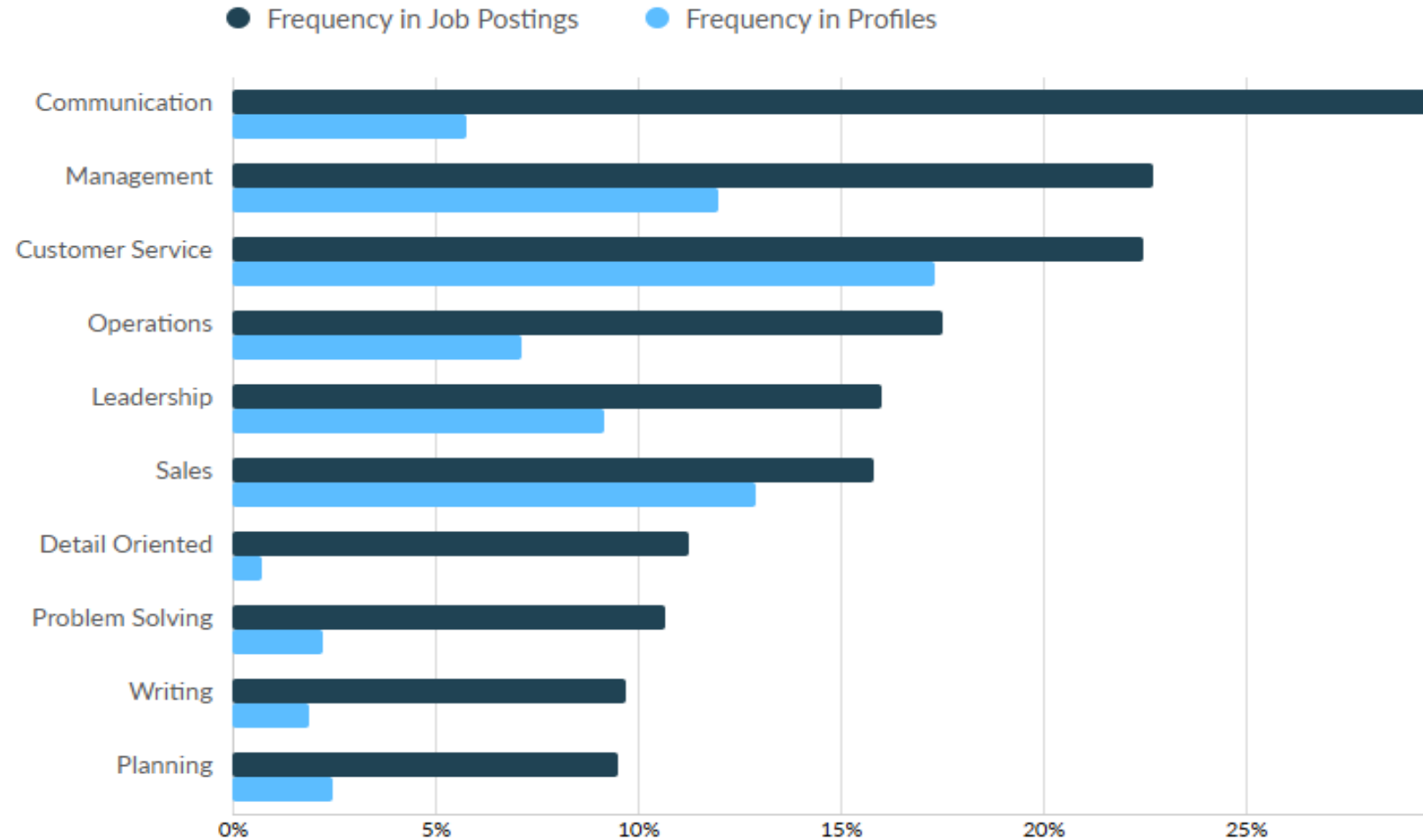
- Registered Nurse
- Retail Salesperson
- Heavy and Tractor Trailer Truck Drivers
- Laborers and Freight, Stock and Material Movers
- First-Line Supervisors Retail Sales Workers
- Computer Occupations
- Physical Therapist
- General and Operations Managers
- Software Developers
- Project Management Specialist
- Medical and Health Services Managers

### Top Posted Job Titles

- CDL-Truck Drivers
- Sales Associates
- Forklift Operators
- Maintenance Technicians
- Registered Nurse
- Project Managers
- Licensed Practical Nurses
- Machine Operators
- Store Managers
- Assistant Store Managers
- Warehouse Associates
- Program Managers
- Production Supervisors
- Systems Engineers

# Job Posting Analytics In Demand Skills

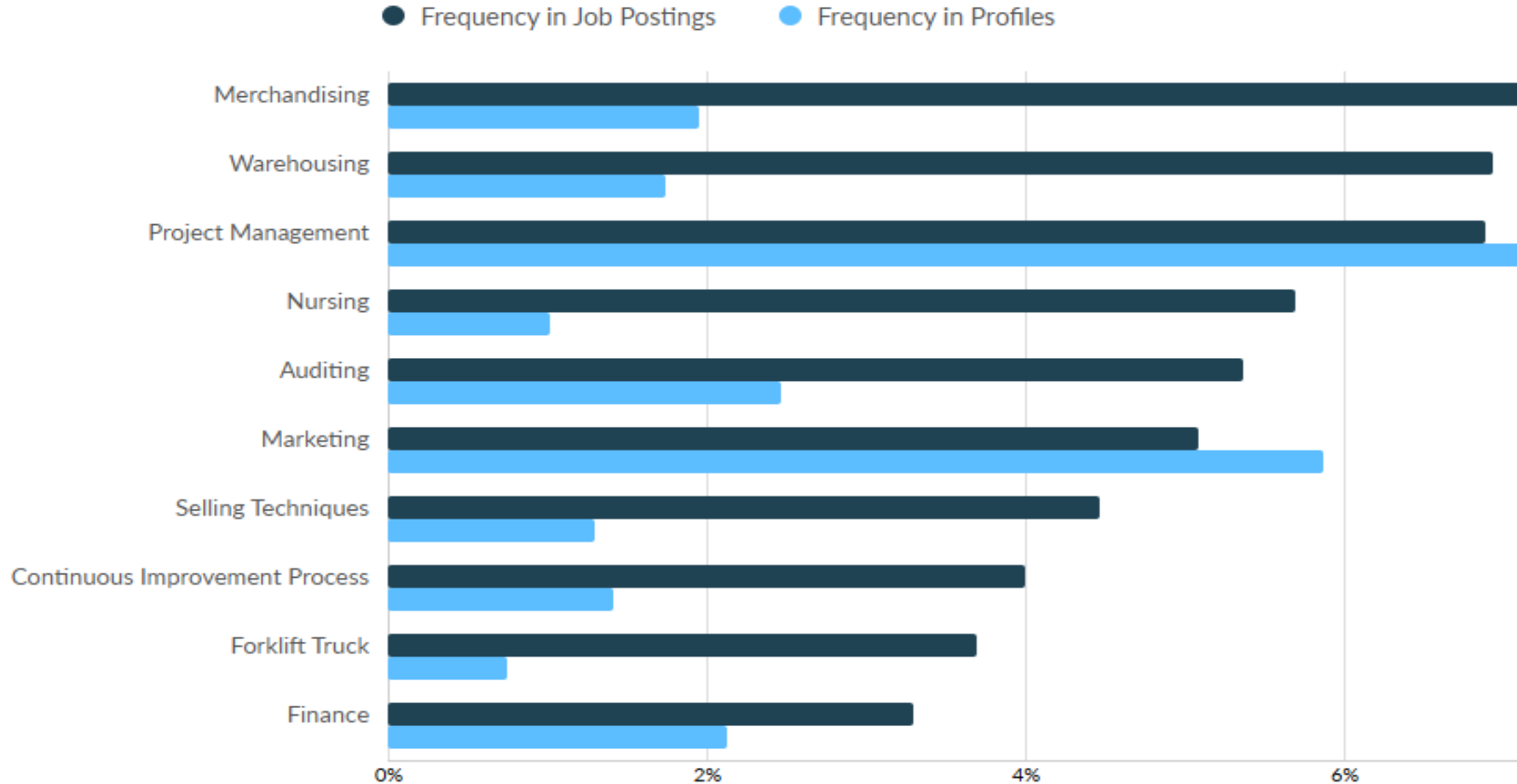
## Top Common Skills





# Job Posting Analytics- In Demand Skills

## Top Specialized Skills



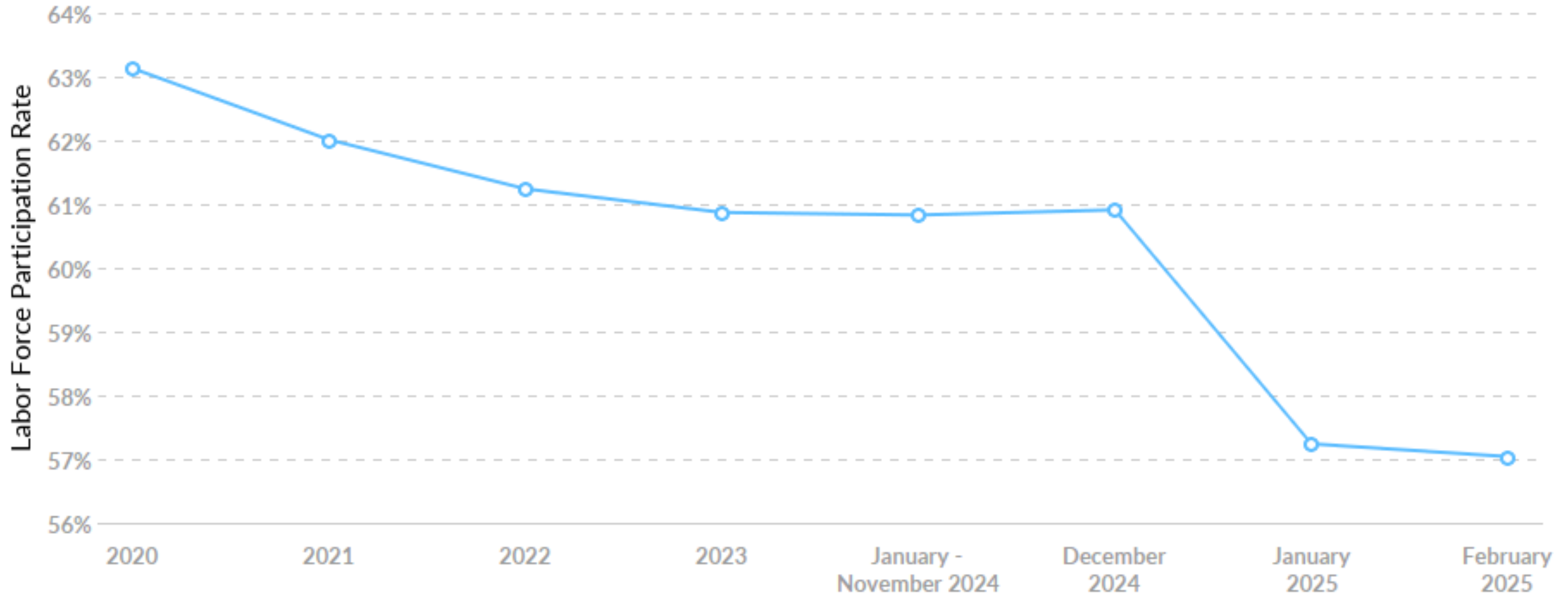


Washington County

M A R Y L A N D

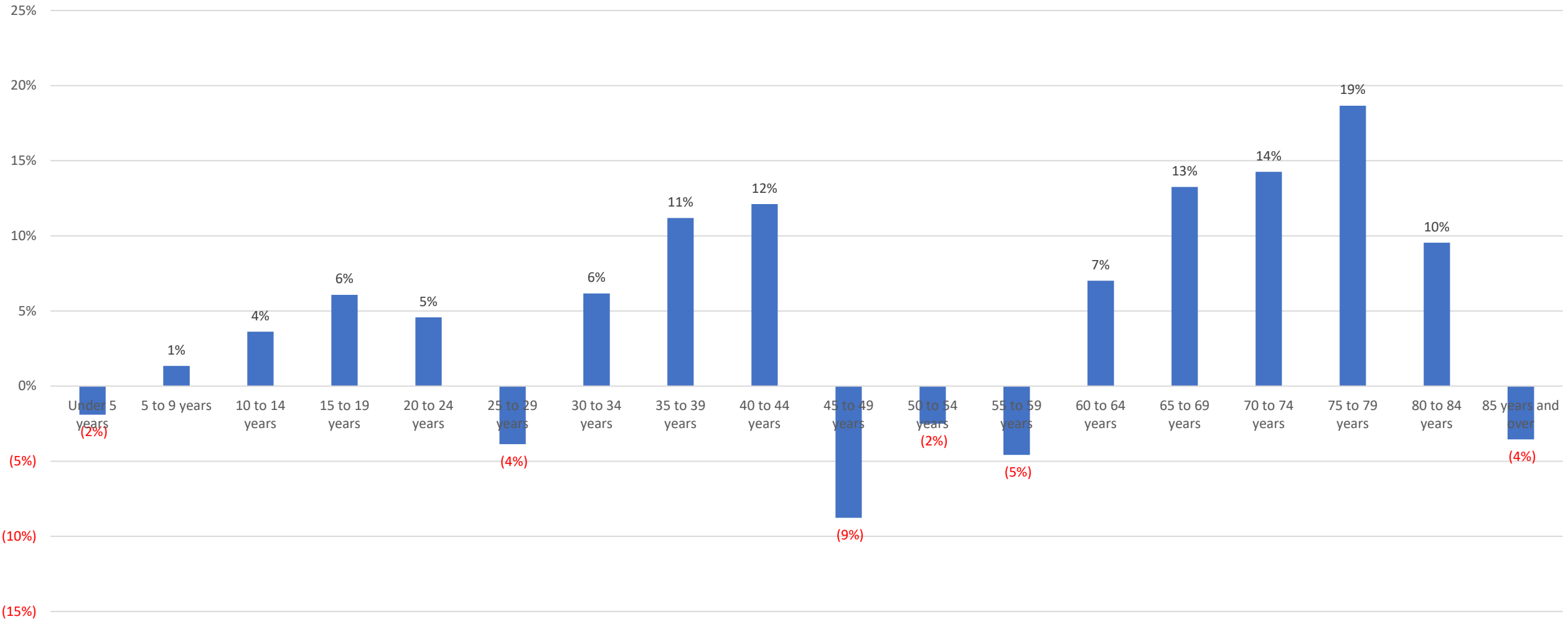
# WORKFORCE & EDUCATION

# Labor Force Participation Rate



# % Change – Population Age

% Change



# Regional Workforce Draw

	Population <sup>1</sup>	Labor Force	Employed	Unemployed	Unemployment Rate (%)	Commuters entering Washington County <sup>2</sup>	Commuters leaving Washington County <sup>2</sup>
State of Maryland	6,263,220	3,248,293	3,150,089	98,224	3.0		
United States	340,110,988	170,744,000	161,861,000	161,861,000	4.0		
<i>Maryland</i> <sup>3</sup>							
Washington County	157,228	73,189	70,745	2,444	3.5		23,860
Allegany County	67,097	31,426	30,231	1,195	3.4	455	
Frederick County	299,317	137,865	133,635	4,230	2.4	3,231	
<i>Pennsylvania</i> <sup>4</sup>							
Franklin County	159,285	76,300	73,600	2,700	3.6	9,674	
Fulton County	14,452	7,000	6,700	300	4.4	1,101	
<i>West Virginia</i> <sup>5</sup>							
Berkeley County	136,287	64,360	62,270	2,090	3.3	7,507	
Jefferson County	61,264	31,260	30,420	840	2.7	485	
Morgan County	17,780	8,190	7,430	260	3.2	1,158	
<b>Regional Totals</b>	<b>912,710</b>	<b>429,590</b>	<b>415,031</b>	<b>14,059</b>		<b>23,611</b>	<b>23,860</b>

Employment and unemployment data are seasonally adjusted.

1 - U.S. Census Bureau - 2024 Population Estimates

2 - U.S. Census Bureau 2016-2020 - 5-Year ACS Commuting Flow

3 - MD Monthly Labor Review - January 2025

4 - PA Dept. of Labor & Industry - Work State - County Profile - January 2025

5 - WV - WorkForceWV.org - LMI - January 2025



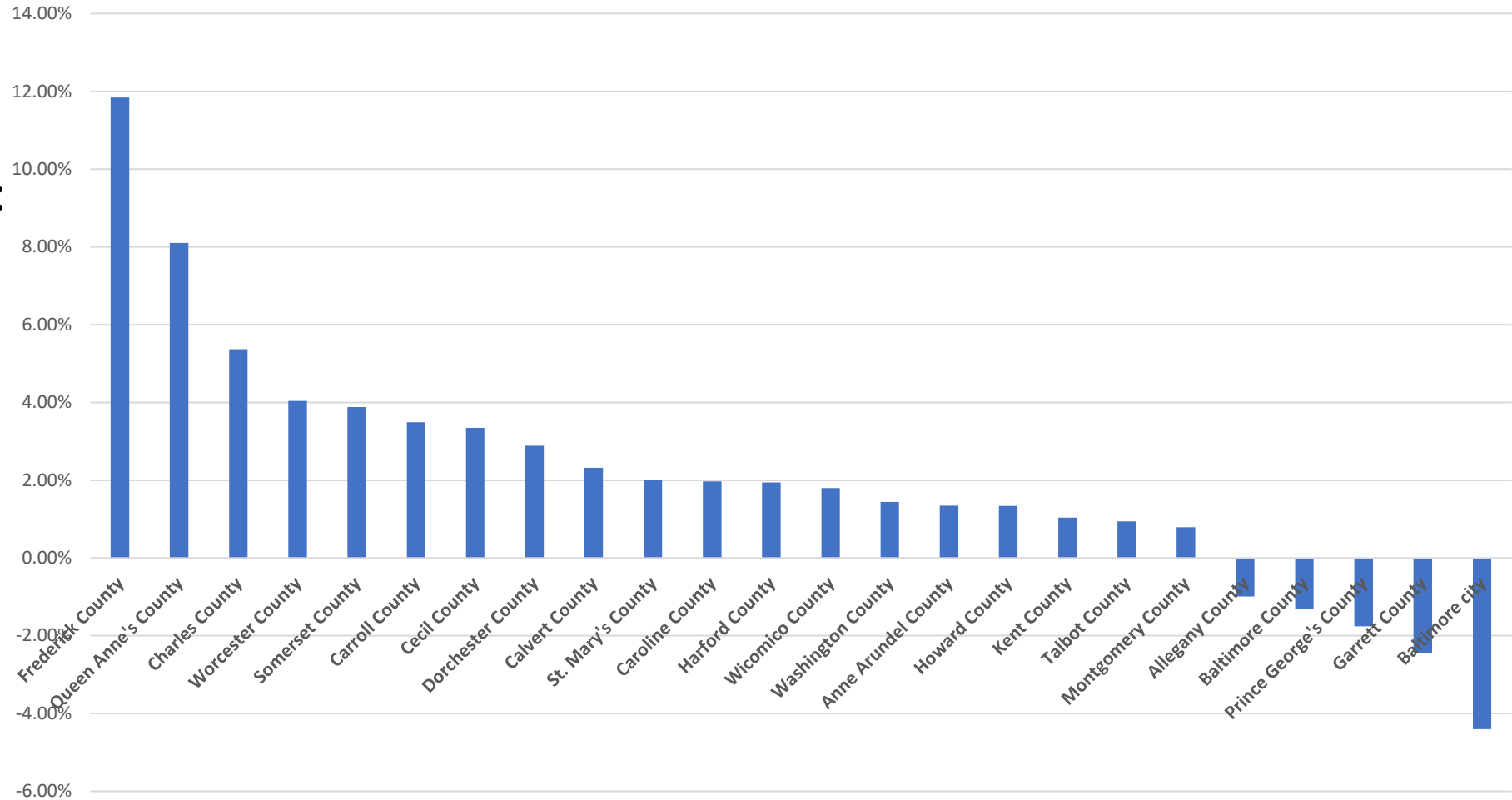
# Maryland Migration Patterns

## MD 11<sup>th</sup> Largest County

### Factors Driving Migration:

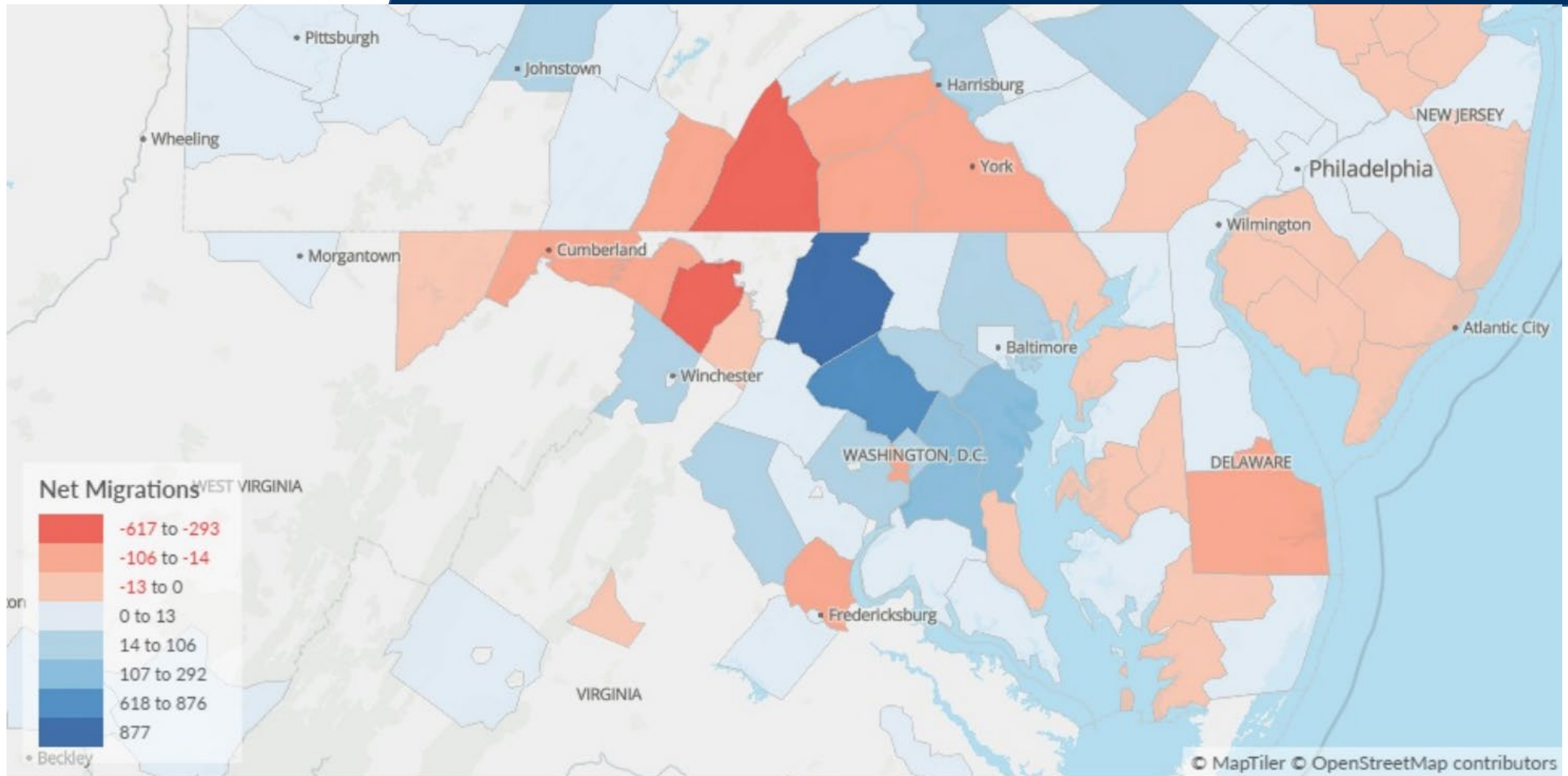
- Remote Work
- Affordability – Housing & COL
- Job Opportunities
- Aging Population Demographics

Population - Percentage of Increase





# Maryland Migration Patterns



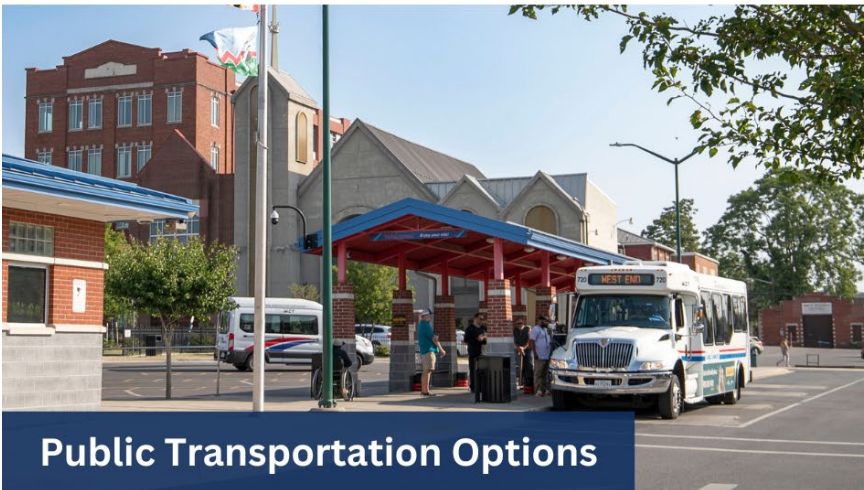
# Workforce attraction challenges



**Affordable Childcare Options**



**Affordable Housing Options**



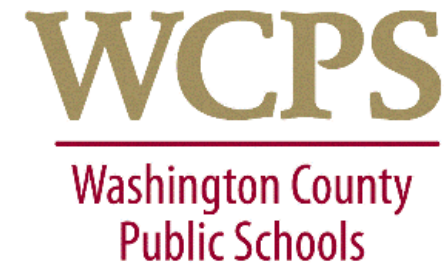
**Public Transportation Options**



**Engagement of disenfranchised youth, second chance population, immigrant population**



# Educational Partners





# Workforce Development Partners

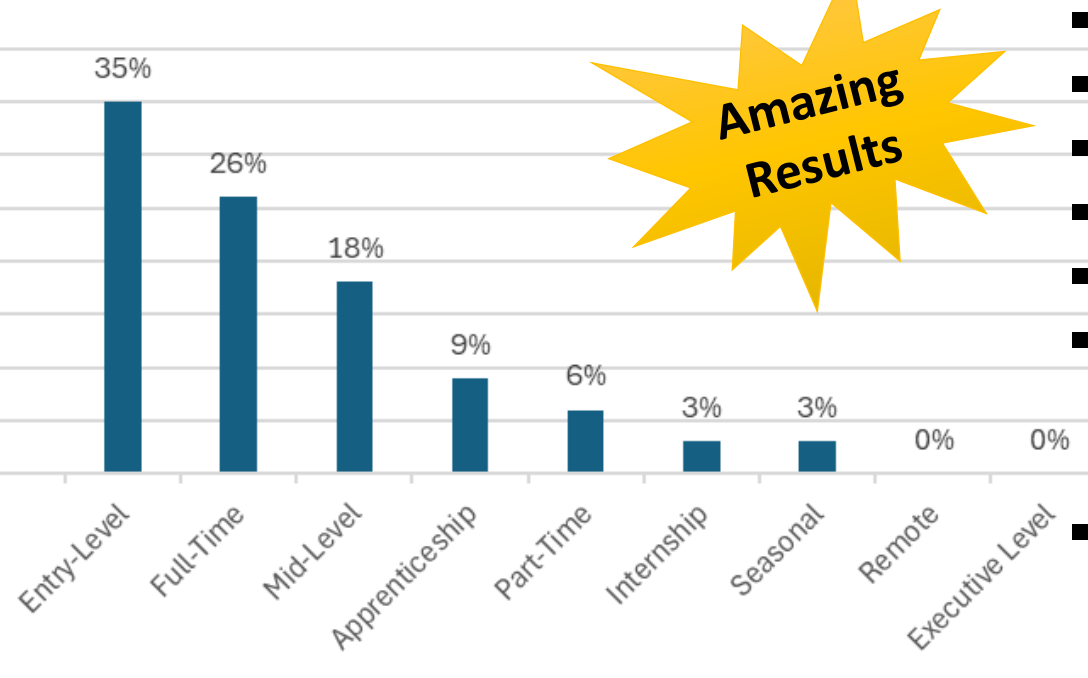


**BARR CONSTRUCTION INSTITUTE**



# Workforce Partnership - HCC

Type Of Position Seeking to Hire



Amazing  
Results

- Biz Attendance = 123
- # of Representatives = 257
- Event Attendees = 1,324
- HCC Students = 208
- WCPS Students = 300
- Public Job Seekers = 793
- 55% of Businesses met with 21 or more job seekers!!
- 33% anticipate making a hire from this event!!



**MARCH 28, 2025 | 10 AM - 2 PM**  
HAGERSTOWN COMMUNITY COLLEGE ARCC

**CAREER EXPLORATION • PROFESSIONAL NETWORKING  
EMPLOYMENT RESOURCES • EDUCATIONAL PATHWAYS**

PRESENTED BY HAGERSTOWN COMMUNITY COLLEGE, WASHINGTON COUNTY BUSINESS & ECONOMIC DEVELOPMENT,  
WASHINGTON COUNTY CHAMBER OF COMMERCE, WASHINGTON COUNTY PUBLIC SCHOOLS



- Offer local employers the opportunity to showcase their organizations and share job and career pathway information
- Offer job seekers the opportunity to apply and interview for local jobs
- Offer local higher education institutions the opportunity to share information about credit and workforce training options
- Offer break-out training sessions for both job seekers and employers



REGISTER NOW >> [HAGERSTOWNCC.EDU/CAREEREXPO](https://hagerstowncc.edu/careerexpo)



Washington County

M A R Y L A N D

# TOURISM

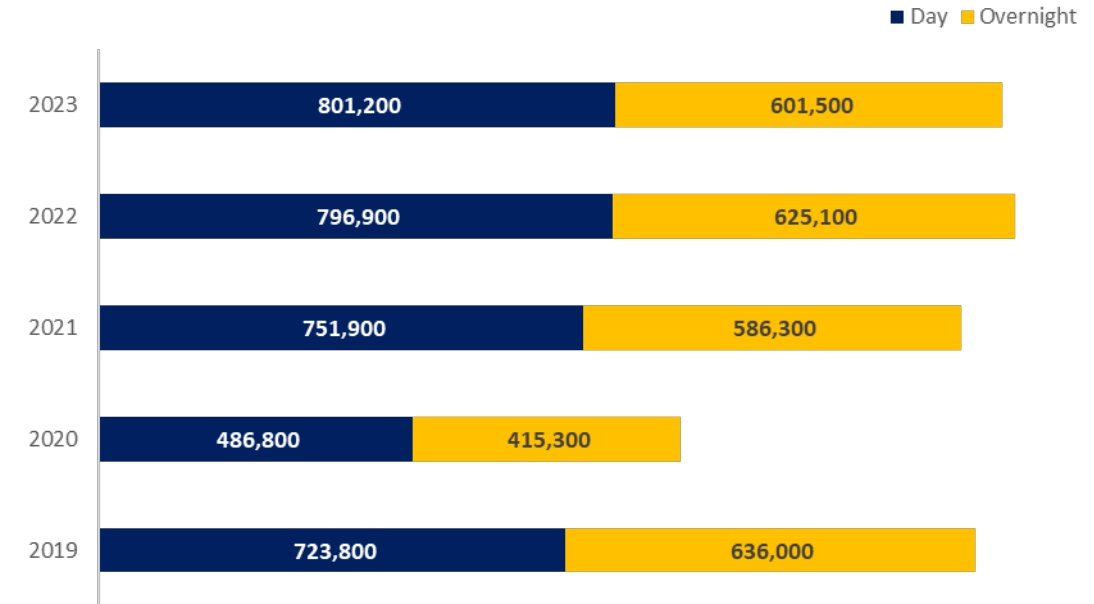


# Visitors to Washington County

Despite a year-over-year decrease in visitor volumes, the majority of key indicators remained above pre-pandemic levels.



Washington County Tourism  
Annual Visitors



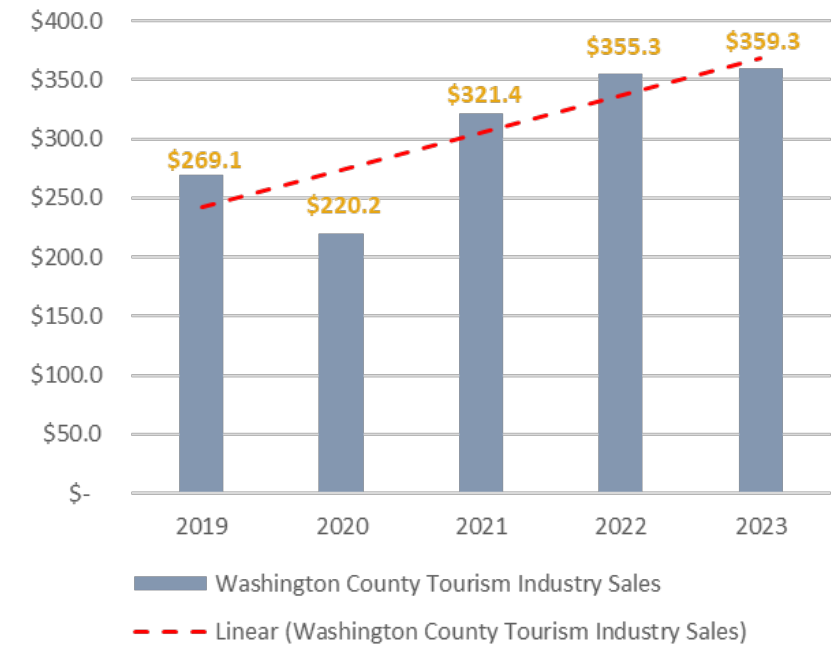


# Visitor Spend

Visitor spending grew 1% in Washington County in 2023, reaching \$359 million in 2023.

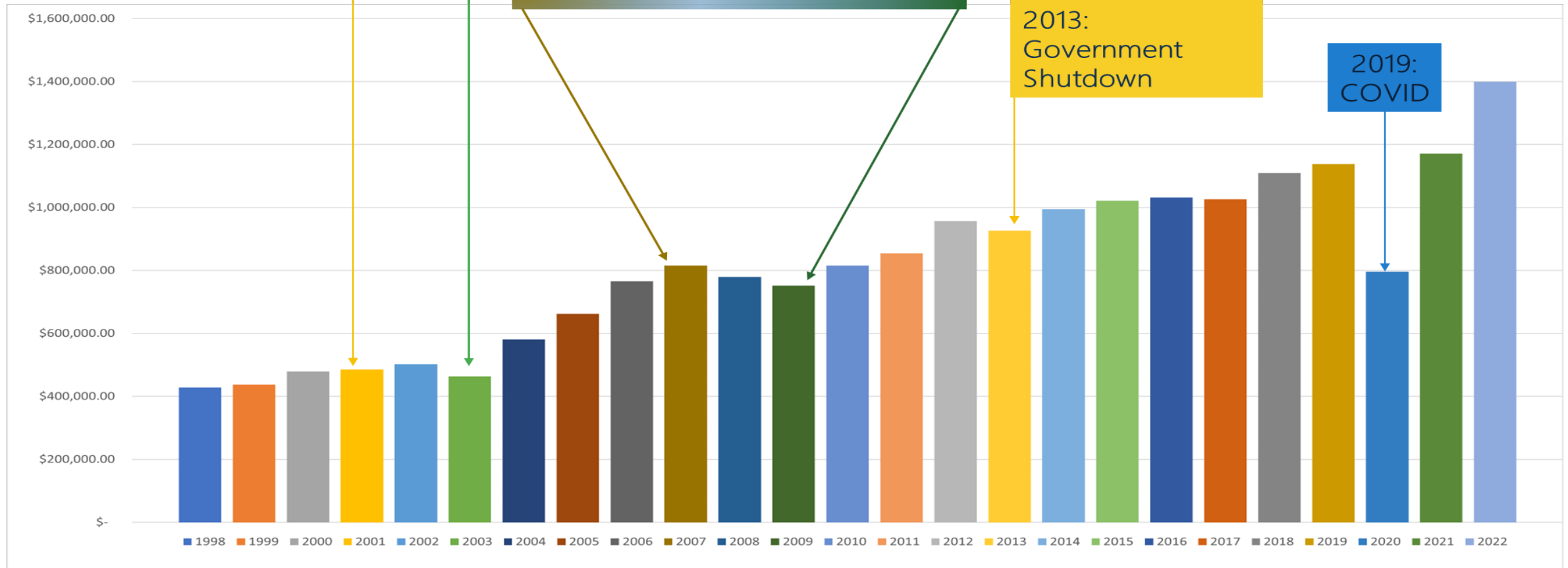


Washington County Tourism Industry Sales (in millions)



# Tourism's Resiliency

## LODGING TAX



# Multi-Use Sports / Events Facility



- ❑ Home to the Hagerstown Flying Boxcars, a minor league baseball team within the Atlantic League of Professional Baseball (APLB)
- ❑ Grand opening game held on May 17, 2024
  - 60 professional games held
  - Several amateur baseball games hosted
  - Joe Nichols concert
  - Welcome home party for Olympic Bronze Medalist Aaron Brooks
  - Other community events, such as New Year's Eve Krumpes Donut Drop
- ❑ Expect 200,000+ visitors to downtown Hagerstown in 2025!!



# What else do they come for?

- ☐ Antietam Battlefield
- ☐ Breweries/Wineries/Distilleries/Cideries
- ☐ C&O Canal
- ☐ Country Clubs
- ☐ Golf Courses
- ☐ Hagerstown Aviation Museum
- ☐ Hagerstown Regional Airport
- ☐ Hagerstown Speedway
- ☐ Atlantic League Baseball
- ☐ Maryland Theatre
- ☐ Mason Dixon Dragstrip
- ☐ Retail/Dining
- ☐ Ritchie Revival
- ☐ Outdoor Recreation/Parks/Scenic Vistas
- ☐ Washington County Museum of the Fine Arts
- ☐ 5 National Parks





Washington County

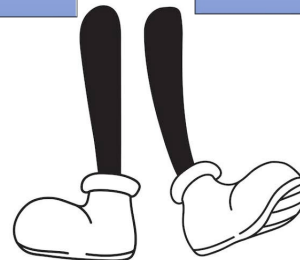
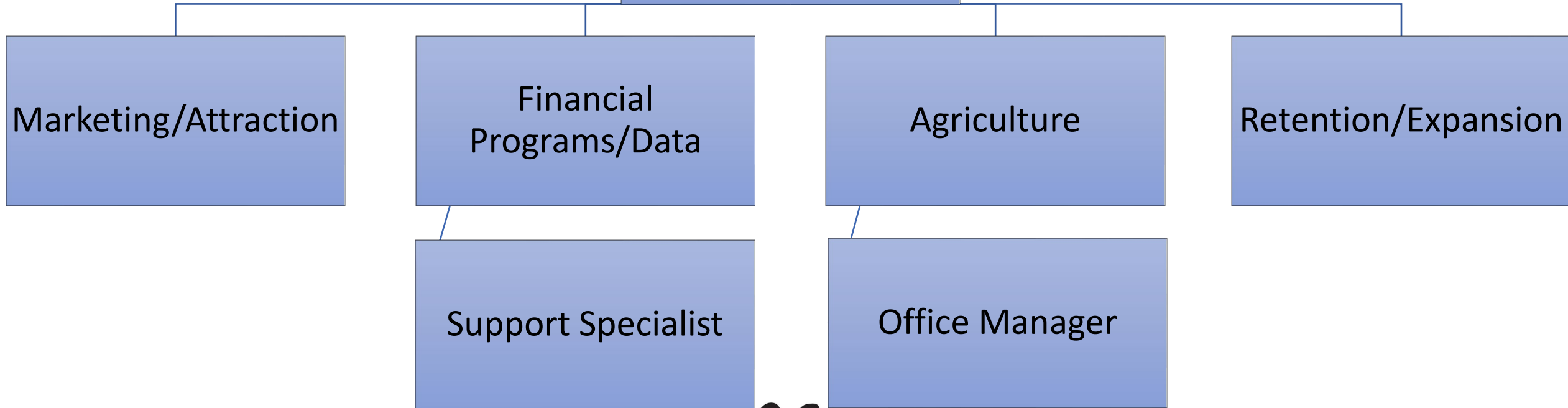
M A R Y L A N D

# DEPARTMENTAL PERFORMANCE

*Taking*  
CARE  
OF *Business*  
WASHINGTON COUNTY, MD

# Reorganization

Director





- ✓ 41% (121,251 ac) of Washington County acreage (293,223 ac total) is farmland
  - Ranked #1 in Maryland in number of cattle and calves
    - 266 beef farms with 7,068 beef cattle
  - Ranked #1 in Maryland in milk production
    - 94 dairy farms milking 10,815 cows
  - Ranked #1 in Maryland in sales of fruits, tree nuts and berries
    - 41 orchards producing on 1,464 acres
    - 25 farms producing berries on 48 acres



Washington County Statistics	
Number of Farms	869
Total Land in Farms	121,251
Average Acres/Farm	140
<i>Estimated Market Value of Land &amp; Buildings:</i>	
Average per Farm	\$1,209,385
Average per Acre	\$8,668
Total Farm Income	\$167.9 mil
Average Market Value of Products Sold, per Farm	\$193,219

# Ag Marketing Professional (AMP)



Groundhog Day 2025



Farm of the Year Award 2024



Faces of Farming Video Campaign



Hagerstown Magazine Grown Local  
Special Edition Supplement



Washington County Maryland Agriculture  
Innovation and Equipment Grant



Ice Cream Trail 2024



## Growth of Wineries, Breweries, and Distilleries

- ☐ 9 Wineries currently open
- ☐ 1 Cidery – 2 scheduled to open in 2026
- ☐ 8 Breweries currently open
- ☐ 3 Distilleries currently open

## Growth in value added products from local farms as part of the Buy Local Movement

- ☐ Cheese
- ☐ Ice cream
- ☐ Ready to eat foods
- ☐ Agritourism
- ☐ Kombucha



*Red Heifer Winery*

# Incentive Programs - JCRP



## Tier 1

- Create at least 5 FT jobs
- Min sq/ft requirements
- Abate property tax for 3 yrs

## Job Creation and Real Property Tax Credit Program

Provides County property tax abatement to developers and tenants in exchange for the creation of new employment opportunities and investment into properties and infrastructure

## Tier 2

- Create at least 25 FT jobs
- Min sq/ft requirements
- Abate property tax for 6 yrs



## Tier 3

- Create at least 200 FT jobs
- Invest at least \$20M CAPEX
- Must pay 80% of employees 200% Maryland Min. Wage
- Abate property tax for 15 yrs

\*Pad Ready Site Stimulus & New Jobs Tax Credit will sunset effective 6/30/25\*



# Incentive Programs - FTZ



## Creating Jobs

Employing More Than **800** Washington County Workers in a Foreign Trade Zone #255. For example: Conair & Lenox are proudly participating in the Foreign Trade Zone in Washington County. Discover the benefits of our strategic location today!



## Mitigating Risk

Leveraging strategic positioning to optimize supply chains, reducing costs and improving efficiency. Our Proximity to key hubs streamlines import/export processes and minimizes customs duties and taxes. The advantageous location enhances your Company ability to compete internationally!



## It worked!

Two companies activated already, and a 3<sup>rd</sup> is in process

## FOREIGN TRADE ZONE #255

Washington County, Maryland



**Boost Your Business's Competitiveness in Washington County, MD - Unlock Greater Benefits Today!**



## Cutting Costs

Minimize duties, taxes, and other expense related to importing and exporting goods, improve your bottom line and deliver exceptional value!



## Driving Growth

Offering efficiency, innovation and incredible reach, this Foreign Trade Zone is located directly off I-81 and I-70 corridor. Reaching two thirds of the United States Population within in 1 day and one of the largest ports in the United States within in 1 hour.

**Cut Costs.  
Mitigate Risk.  
Drive Growth.**

Washington County, Maryland  
**Foreign Trade Zone #255**



- ❑ \$29,077,000 - Foreign Status Value
- ❑ \$127,597,000 - Merchandise Received for Domestic Status (inside the U.S.)
- ❑ \$179,332,000 - Merchandise Received for Foreign Status
- ❑ \$306,929,000 - Merchandise Received
- ❑ \$255,095,000 - Forwarded to U.S. markets
- ❑ \$1,000,000 - Forwarded to Foreign Countries
- ❑ 203 Workers hired inside FTZ #255



# Marketing and Attraction

SITE PROFILE ► **Washington County, Maryland**

## WASHINGTON COUNTY, MARYLAND:

WHERE INNOVATION MEETS INFRASTRUCTURE –  
A STRATEGIC EPICENTER OF INDUSTRY AND OPPORTUNITY

Washington County emerges as a prominent core of industry, showcasing a tapestry of innovation across approximately 20 industrial technology and business parks. Here, the landscape resonates with the hum of productivity, where sectors ranging from robust fabricated metals to the intricate craftsmanship of clay, cement and concrete thrive side by side with precision manufacturing of transportation equipment parts and so much more.

Nestled about one hour from Baltimore and Washington D.C., our community embodies a unique fusion — a blend where metropolitan vibrancy meets the tranquility of rural life. This proximity not only enriches daily living but also fuels a spirit of innovation and enterprise among its residents and businesses.

A critical gateway to global trade lies just 70 miles east of Hagerstown at the Port of Baltimore, boasting two 500-foot-deep channels, capable of accepting two mega-ships simultaneously,

supporting the Country's largest roll-on/roll-off terminal. Coupled with Washington County's designation under Foreign Trade Zone #255, which facilitates duty-free processing of international goods, businesses here enjoy a strategic advantage in the global marketplace.

Moreover, Washington County's infrastructure is tailor-made for success, boasting comprehensive rail and airport access that seamlessly integrates with its excellent interstate visibility. This strategic positioning not only enhances logistical efficiency but also underscores the county's commitment to supporting the growth and prosperity of its diverse manufacturing community and logistic community.

In this thriving environment, Washington County, Maryland emerges as more than just a location — it's a strategic epicenter where innovation, opportunity and community converge, fostering a landscape ripe for visionary enterprises.

**Cut Costs.  
Mitigate Risk.  
Drive Growth.**

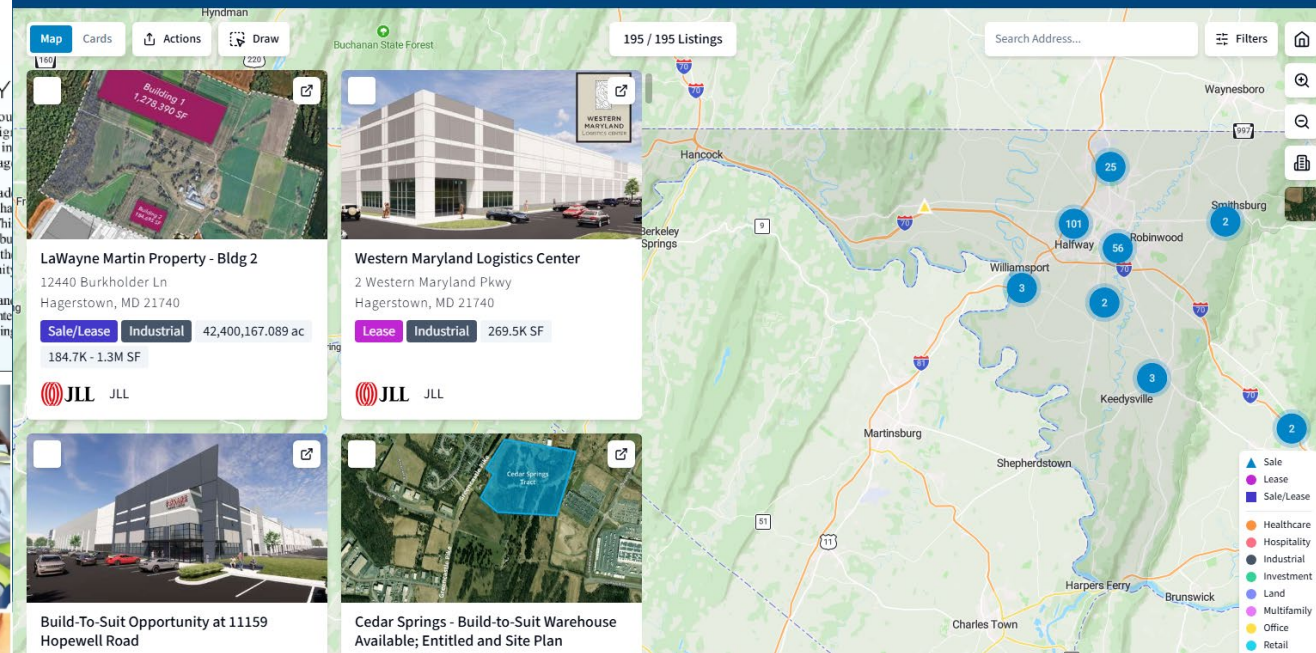
Washington County,  
Maryland  
**Foreign Trade Zone #255**



**PORT OF BALTIMORE**  
DIRECTORY ONLINE

## Site Search

The Washington County Business and Economic Development office understands that securing the ideal commercial property is essential for your business success. Explore a diverse selection of real estate options in Washington County, including shovel-ready sites, custom build-to-suit properties, high-tech office parks, and premium retail spaces in prime locations.



# SITE SELECTION

**Cut Costs.  
Mitigate Risk.  
Drive Growth.**



Washington County, Maryland  
**Foreign Trade Zone #255**

[www.washco-md.net/dbd/foreign-trade-zone](http://www.washco-md.net/dbd/foreign-trade-zone)



Where *Innovation* Meets *Opportunity*

Maryland's economic evolution:  
Local strategies fuel  
Statewide Advancement

Washington County, MD  
DBED Update 2025



# Entrepreneurial Ecosystem



- ❑ 3-day event for Entrepreneurs & Small Business Owners
- ❑ Conference designed to empower, inspire with tools, resources and connections.



- ❑ Business Starts – 15
- ❑ Capital Infusion - \$2,453,850
- ❑ Clients Counseled – 205



- ❑ 40 offices + wet labs
- ❑ 5 common areas
- ❑ 2 conference rooms
- ❑ 2 kitchen areas
- ❑ 1 commercial kitchen
- ❑ 7 in-house mentors
- ❑ 7 community partners

# Ribbon Cuttings/Celebrations

The Department of Business and Economic Development represented the BOCC at

**145**

events since the last Eggs and Issues in June 2023!!





# George Edwards Fund

Project Name	Total Project Value	Award Amount
Fort Ritchie (Phase 1)	\$3,075,000	\$1,000,000
Fort Ritchie (Phase 2)	\$2,445,000	\$750,000
Meritus - MSOM (Phase 1)	\$46,000,000	\$1,523,853
Meritus - MSOM (Phase 2)	\$46,000,000	\$1,500,000
Optimize Water Solutions	\$638,000	\$200,000
HCC Workforce Training Center	\$18,000,000	\$447,476
PIA	\$2,423,840	\$1,300,000
Lanco Pennland	\$6,910,449	\$1,161,600
Brooklane	\$1,800,000	\$1,080,000
Boonsboro Entertainment	\$6,200,000	\$500,000
WMD Cyber Range	\$2,058,000	\$617,400
Hub City Vinyl	\$800,000	\$500,000
One North LLC (Ringers)	\$1,525,000	\$500,000
CVB Visitors Center	\$7,500,000	\$500,000
Potomac Ridge Brewing	\$216,940	\$194,940
Port 44 LLC	\$221,500	\$166,764
Project Gateway	\$45,000,000	\$2,000,000
<b>Total Project Values</b>	<b>\$190,813,729</b>	
	<b>Total Award</b>	<b>\$13,942,033</b>
	<b>Leverage Multiplier</b>	<b>13.69</b>



# Hagerstown Regional Airport



- ❑ Enhanced flight schedule for 2025 – approximately 337 flights
  - Flights to Orlando-Sanford and St. Pete-Clearwater expanded to 3 days a week
  - Flights to Myrtle Beach and St. Pete-Clearwater extended through November
  - Many flights will be operated on Allegiant's new Boeing 737 Max 8 200 aircraft
- ❑ Services Provided:
  - Nearly 20 businesses offering aviation services at HGR
  - 2 asphalt runways (7,000 x 150 ft and 3,165 x 100 ft)
  - Federally – funded Air Traffic Control Tower
  - Commercial service air passenger service/ charter flights
  - Fuel sales
  - Flight training programs
  - Aircraft rental and sales, corporate flights
  - Automobile rentals
- ❑ \$5.25 million grant awarded under Bipartisan Infrastructure Law:
  - Expand terminal by 20%, providing essential space for airline operations, concessions, and passenger amenities.



# Infrastructure Projects

## ❑ I-81 Phase II- Lane Widening

- \$100M in State's long-term capital transportation plan
  - 90% of that came through federal funding
  - Construction funding begins in 2027
- Widening from 4 to 6 lanes
- 4 mile stretch from MD 63 / MD 68 (Lappans Rd) to Halfway Blvd, 3 interchanges
- Enhance safety and improve access to business and industrial parks
- Final Design anticipated to be complete by 2026

## ❑ County Funded

- \$5M for Pavement Maintenance and Rehab
- \$874K in FY25 for Eastern Blvd Widening and Improvements (total \$23.9M)
  - Widens Eastern Blvd from 2-lane roadway to 4-lane divided roadway from Jefferson Blvd to Antietam Drive
  - Economic development opportunity – supports regional growth
- Halfway Blvd (\$2M in FY25, \$11.4M total) and Wright Rd (\$0 in FY25, \$4.8M total)
  - Economic development opportunities – business and industrial park infrastructure



*Interstate 81*



*Halfway Boulevard Extended*

## 2025 Projects under development

- \$783 million in new investment with 2,094 new jobs estimated
  - ❑ \$146M Meritus Health (Hagerstown)- Osteopathic Medical School – 196,000 S.F., 50 jobs
  - ❑ \$75M National Pk Logistics (Bldg 2, Hagerstown) - Warehouse /Distribution – 1,400,000 S.F., 300 jobs
  - ❑ \$30M Currwood (Hagerstown)- Warehouse /Distribution – 300,000 S.F., 250 jobs
  - ❑ \$59M Lifetime Brands (Huyett's) - Warehouse /Distribution – 1,000,000 S.F., 236 jobs
  - ❑ \$250M Project Oyster – Warehouse/Distribution - 250,000 S.F. - 150
  - ❑ \$4M Hitachi Rail (Hagerstown)- Manufacturing / R&D – 6,000 S.F., 5 jobs
  - ❑ \$50M Penzance (Cushwa Crossing, Williamsport)- Warehouse/Distribution – 510,000 S.F., 400 jobs
  - ❑ \$30M Victaulic (Virginia Ave) - Warehouse/Distribution - 300,000 S.F., 200 jobs
  - ❑ \$10M Meritus Commons (Student Housing) - **Osteopathic Medical School**
  - ❑ \$50M Cascade Properties (Former Fort Ritchie)- Mixed Use – 120 jobs
  - ❑ \$50M Martin Farm (Diversified Capital)- Commercial – 1,000,000 S.F. - 300 jobs
  - ❑ \$26M Hagerstown Field House/Sports Complex (Hagerstown)- Commercial – 114,000 S.F., 43 jobs
  - ❑ \$7M Stratosphere Social (County) – Commercial – 25,000 S.F., 40 jobs
  
- An additional \$300M in estimated project costs for New Projects Announced in 2025



*Hagerstown Field House*



# Coming Soon!

## Stratosphere Social 10313 Arnett Drive Hagerstown, MD

- Community focused entertainment venue
- Packed with state-of-the-art attractions for all ages- high tech bowling alley, modern arcade, virtual reality experiences.
- Delicious food and a full-service bar.
- Host Birthday parties, Team building events , Networking events and more!





Washington County

M A R Y L A N D

# Thank you

Jonathan Horowitz

Director - DBED

Washington County, MD

240-313-2283

[jhorowitz@washco-md.net](mailto:jhorowitz@washco-md.net)

*Connect with us*



[www.washco-md.net](http://www.washco-md.net)