



# Making Connections

Washington County, Maryland



October 16, 2018

# Making Connections Projects

*"Connecting Washington County by creating partnerships and improving economic development, transportation, public safety and pedestrian access."*

## 📍 Colonel Henry K. Douglas Drive



The project involves the construction of 1,500 LF of four-lane closed-section road and will extend Colonel Henry K. Douglas Drive from Maryland Route 65 (Sharpsburg Pike) to Bushwillow Way in the Cross Creek subdivision. The project will spur commercial development on the lands surrounding the new road, and provide a much-needed second access to the subdivision. In addition, there are future plans to construct the road to Alternate Route 40 to access land for development, and improve the transportation network.

### Contributing Partners

Appalachian Regional Commission (ARC)  
Bowman Development Corp.  
Manor House Builders  
Sharpsburg Pike Holdings, LLC

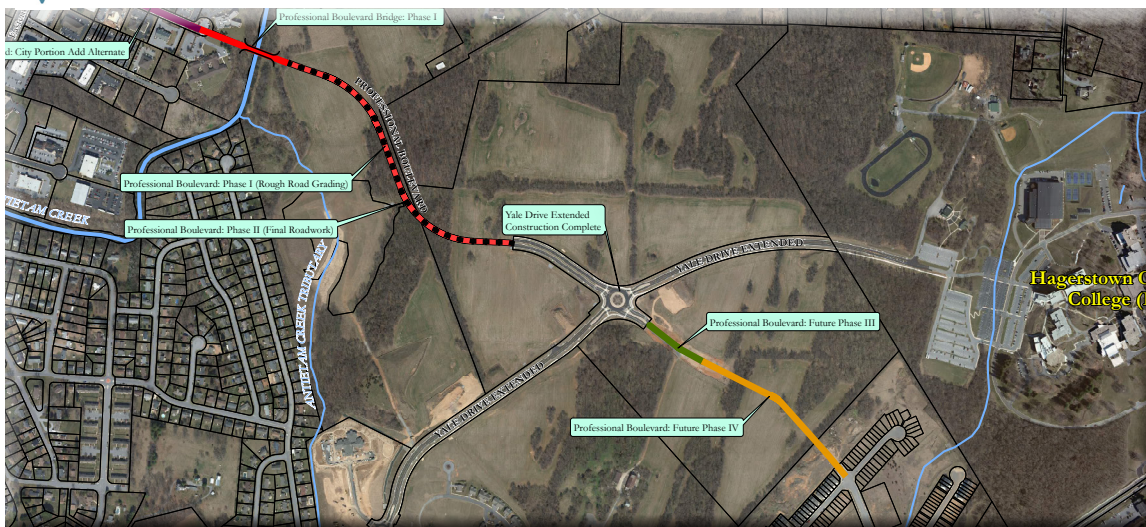
### Funding

ARC Grant  
Developer Contributions  
Local

### Timeline

Advertised | October '18  
Bid | Fall '19  
Complete | Summer '19

## 📍 Professional Boulevard Corridor



Phase 1 and Phase 2 of the project involve the construction of a four-lane closed-section road to connect Eastern Boulevard to Yale Drive, including building a 300-ft span bridge over Antietam Creek. The connection will provide access to Mt. Aetna Technology Park, reduce emergency service response times from Eastern Boulevard to the Meritus Medical Center, and avoids a route with multiple traffic signals which will improve traffic flow and congestion. Construction of Phase 3 and Phase 4 will connect Professional Boulevard from Yale Drive to Robinwood Drive.

### Contributing Partners

Appalachian Regional Commission (ARC)  
CHIEF  
City of Hagerstown  
Washco Developments, Inc.

### Funding

ARC Grant  
CHIEF Donated Land  
Local

### Timeline

Bid (Phase 1) | Fall '18  
Complete (Phase 1) | Fall '20  
Complete (Phase 2) | Fall '21  
Complete (Phase 3, 4) | Fall '22

## Crayton Boulevard Extended



The project involves the construction of 3,050 LF of a three-lane closed-section road to connect Maugans Avenue to Showalter Road and will occur in two phases. The extension of the road will facilitate development of the surrounding land into a business and industrial park, and provide an additional service route to the Hagerstown Regional Airport and an alternate route between Exit 9 and Exit 10 on Interstate 81. Phase 1, which extends existing Crayton Boulevard 1,850 LF, is currently under construction.

### Contributing Partners

Appalachian Regional Commission (ARC)  
Bowman Development Corp.  
Perini Industrial Land, LLC  
Trammell Crow Company

### Funding

ARC Grant  
Developer Contributions  
Local

### Timeline

Groundbreaking | October '18  
Complete | Summer '19

## Halfway Boulevard



The project involves the construction of 3,250 LF of a four-lane open-section road and major culvert to connect MD Route 63 (Greencastle Pike) to existing Halfway Boulevard at Newgate Boulevard. The extension of the road will facilitate commercial development of the surrounding land and accommodate heavy truck traffic in the area by providing an alternate route between Interstate 81 and Interstate 70.

### Contributing Partners

Appalachian Regional Commission (ARC)  
Bowman Development Corp.  
Pax Edwards

### Funding

ARC Grant  
Developer Contributions  
Local

### Timeline

Bid | Fall '20  
Complete | Fall '22



## Economic Development

JOB CREATION

INCREASED DEVELOPMENT

INCREASED TAX BASE



## Transportation

MANAGE INCREASING TRAFFIC VOLUMES

ALTERNATIVE ROUTES & EASIER ACCESS

IMPROVED LOGISTICS & ACCESS TO I-81



## Public Safety

SHORTER ROUTES TO MERITUS HOSPITAL

RESPONSE TIMES REDUCED SIGNIFICANTLY

EMERGENCY SERVICES QUICK ACCESS



## Pedestrian Access

SIDEWALKS AND WALKING PATHS

BIKING LANES, TRAILS AND BRIDGE

MORE BUS STOPS FOR COMMUTING