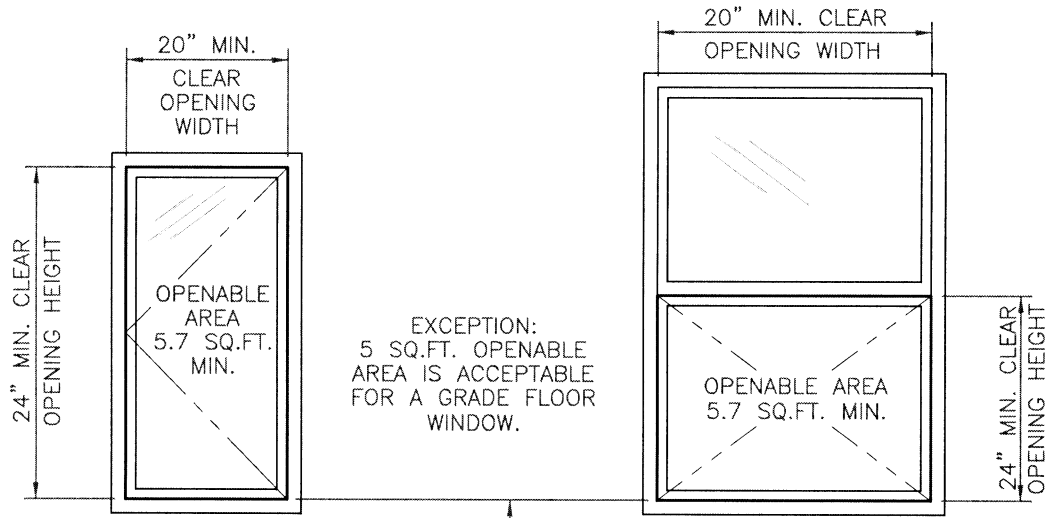


# EMERGENCY ESCAPE AND RESCUE WINDOW

## ONE WINDOW REQUIRED PER BEDROOM

SECTION R310 OF THE 2006 IRC



EXCEPTION:  
5 SQ.FT. OPENABLE  
AREA IS ACCEPTABLE  
FOR A GRADE FLOOR  
WINDOW.

THE HEIGHT MULTIPLIED BY THE WIDTH  
OF THE WINDOW CLEAR OPENING  
MUST BE EQUAL TO OR GREATER THAN  
5.7 SQ.FT.

\* GRADE FLOOR WINDOWS MUST BE  
EQUAL TO OR GREATER THAN 5 SQ.FT.

NOTE: THE OPENING SIZE MUST BE  
OBTAINED BY THE NORMAL OPERATION  
OF THE WINDOW. KEYS OR SPECIAL  
TOOLS MUST NOT BE NEEDED TO  
OPERATE THESE OPENINGS.

\* TILT AND REMOVABLE SASHES ARE  
NOT CONSIDERED NORMAL OPERATION.

SILL HEIGHT 44" MAX.

FINISHED FLOOR

# WINDOW SILL HEIGHT REQUIREMENTS

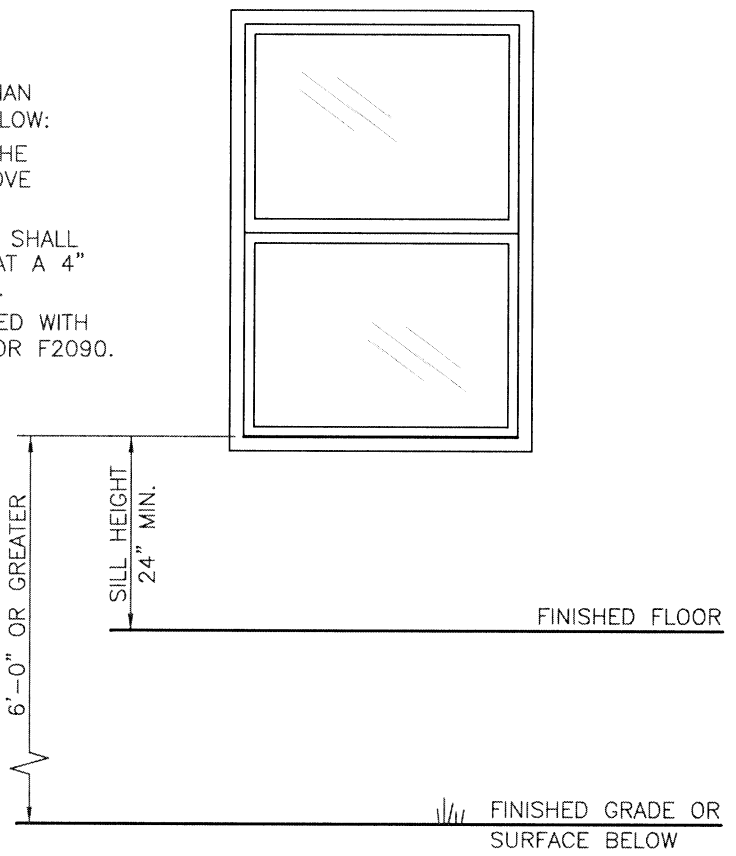
SECTION R613.2 OF THE 2006 IRC

## NEW WINDOW REQUIREMENTS

WHERE A WINDOW OPENING IS GREATER THAN  
72" ABOVE FINISH GRADE OR SURFACE BELOW:

1. LOWEST PART OF CLEAR OPENING OF THE  
WINDOW SHALL BE A MINIMUM OF 24" ABOVE  
FINISHED FLOOR.
2. GLAZING BETWEEN THE FLOOR AND 24" SHALL  
BE FIXED OR HAVE AN OPENING SUCH THAT A 4"  
DIAMETER SPHERE CANNOT PASS THROUGH.

\* EXCEPTION: OPENINGS THAT ARE PROVIDED WITH  
GUARDS THAT COMPLY WITH ASTM F2006 OR F2090.



6'-0" OR GREATER

SILL HEIGHT  
24" MIN.

FINISHED FLOOR

FINISHED GRADE OR  
SURFACE BELOW