

WASHINGTON COUNTY DEPARTMENT OF PERMITS AND INSPECTIONS

TERMINOLOGY:

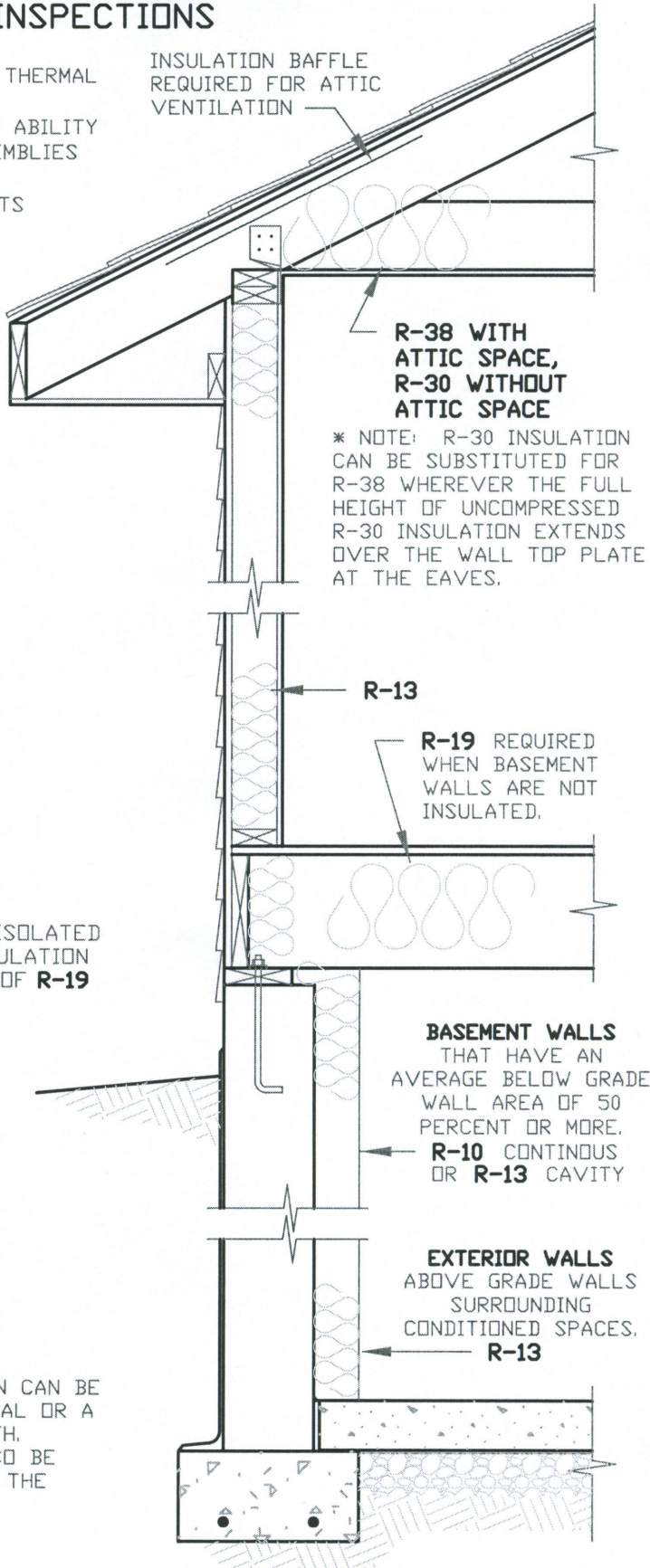
- R-VALUE: A COEFFICIENT WHICH MEASURES A MATERIAL'S THERMAL RESISTANCE (THE HIGHER THE BETTER).
- U-FACTOR: A COEFFICIENT WHICH MEASURES A MATERIAL'S ABILITY TO TRANSFER HEAT. APPLIES TO GLAZING ASSEMBLIES (THE LOWER THE BETTER).
- GLAZING: GLASS ASSEMBLIES, SUCH AS WINDOWS, SKYLIGHTS AND GLASS DOORS.
- FENESTRATION: DESIGN AND POSITION OF WINDOWS IN A BUILDING.

INSULATION & FENESTRATION REQUIREMENTS BY COMPONENT

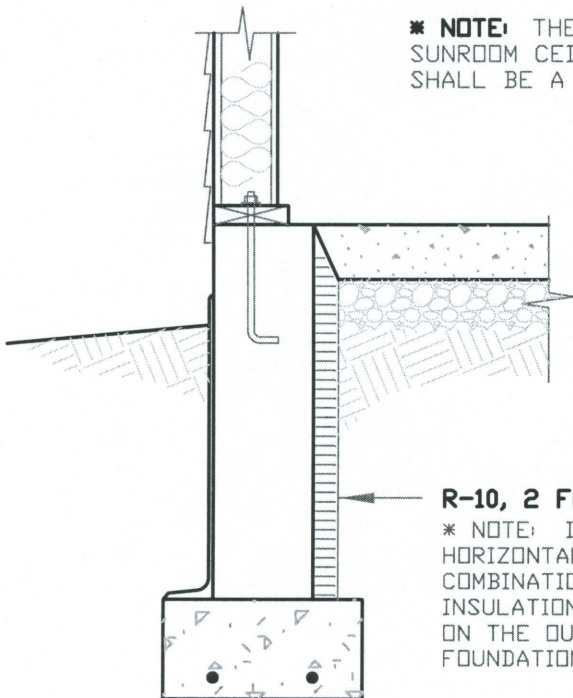
- FENESTRATION U-FACTOR - 0.35
- SKYLIGHT U-FACTOR - 0.60
- CEILING R-VALUE - 38
- WOOD FRAMED WALL R-VALUE - 13
- MASS WALL R-VALUE - 5/10
- FLOOR R-VALUE - 19
- BASEMENT WALL R-VALUE - 10/13
- SLAB R-VALUE AND DEPTH R-10, 2 FEET
- CRAWL SPACE WALL R-VALUE - 10/13

EQUIVALENT U-FACTORS

- FENESTRATION U-FACTOR - 0.35
- SKYLIGHT U-FACTOR - 0.60
- CEILING U-FACTOR - 0.030
- FRAMED WALL U-FACTOR - 0.082
- MASS WALL U-FACTOR - 0.141
- FLOOR U-FACTOR - 0.047
- BASEMENT WALL U-FACTOR - 0.059
- CRAWL SPACE WALL U-FACTOR - 0.065



*** NOTE:** THERMALLY ISOLATED SUNROOM CEILING INSULATION SHALL BE A MINIMUM OF R-19



RESIDENTIAL INSULATION REQUIREMENTS

BUILDING ENVELOPES THAT ENCLOSE CONDITIONED SPACE SHALL COMPLY WITH THE CURRENT INTERNATIONAL ENERGY CONSERVATION CODE