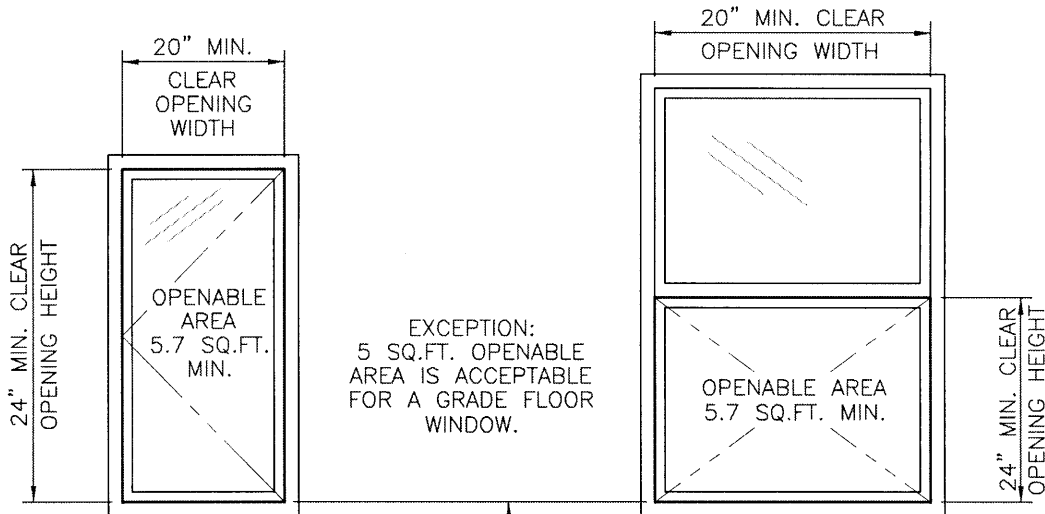


# EMERGENCY ESCAPE AND RESCUE WINDOW

## ONE WINDOW REQUIRED PER BEDROOM

SECTION R310 OF THE 2009 IRC



THE HEIGHT MULTIPLIED BY THE WIDTH OF THE WINDOW CLEAR OPENING MUST BE EQUAL TO OR GREATER THAN 5.7 SQ.FT.

\* GRADE FLOOR WINDOWS MUST BE EQUAL TO OR GREATER THAN 5 SQ.FT.

NOTE: THE OPENING SIZE MUST BE OBTAINED BY THE NORMAL OPERATION OF THE WINDOW. KEYS OR SPECIAL TOOLS MUST NOT BE NEEDED TO OPERATE THESE OPENINGS.

\* TILT AND REMOVABLE SASHES ARE NOT CONSIDERED NORMAL OPERATION.

SILL HEIGHT 44" MAX.

FINISHED FLOOR

# WINDOW SILL HEIGHT REQUIREMENTS

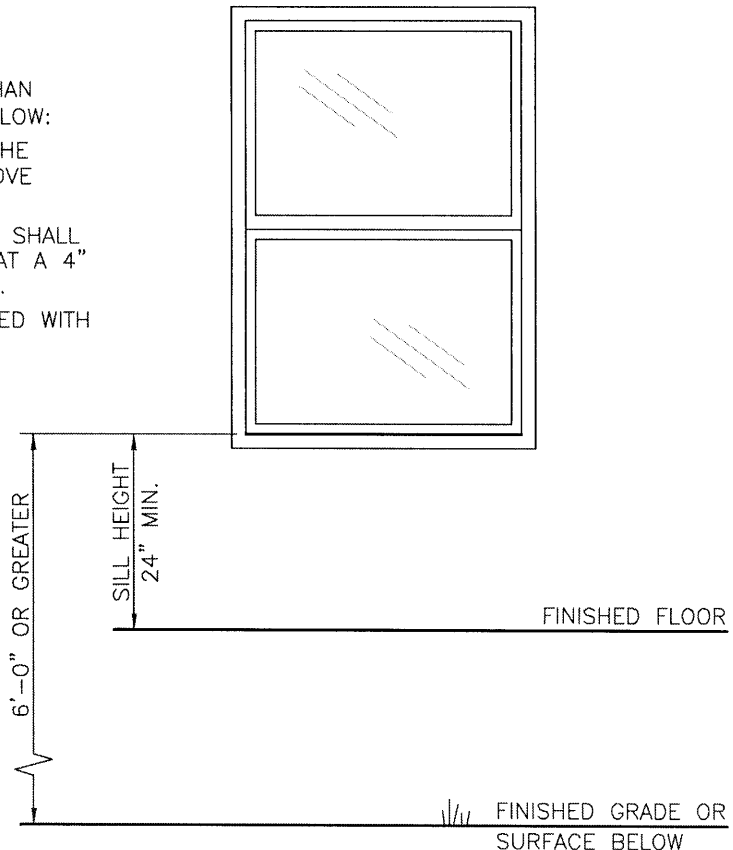
SECTION R612.2 OF THE 2009 IRC

## NEW WINDOW REQUIREMENTS

WHERE A WINDOW OPENING IS GREATER THAN 72" ABOVE FINISH GRADE OR SURFACE BELOW:

1. LOWEST PART OF CLEAR OPENING OF THE WINDOW SHALL BE A MINIMUM OF 24" ABOVE FINISHED FLOOR.
2. GLAZING BETWEEN THE FLOOR AND 24" SHALL BE FIXED OR HAVE AN OPENING SUCH THAT A 4" DIAMETER SPHERE CANNOT PASS THROUGH.

\* EXCEPTION: OPENINGS THAT ARE PROVIDED WITH GUARDS THAT COMPLY WITH ASTM F2090.



WASHINGTON COUNTY  
DEPARTMENT OF  
PERMITS AND INSPECTIONS

REV: 9/01/10

FINISHED GRADE OR  
SURFACE BELOW