

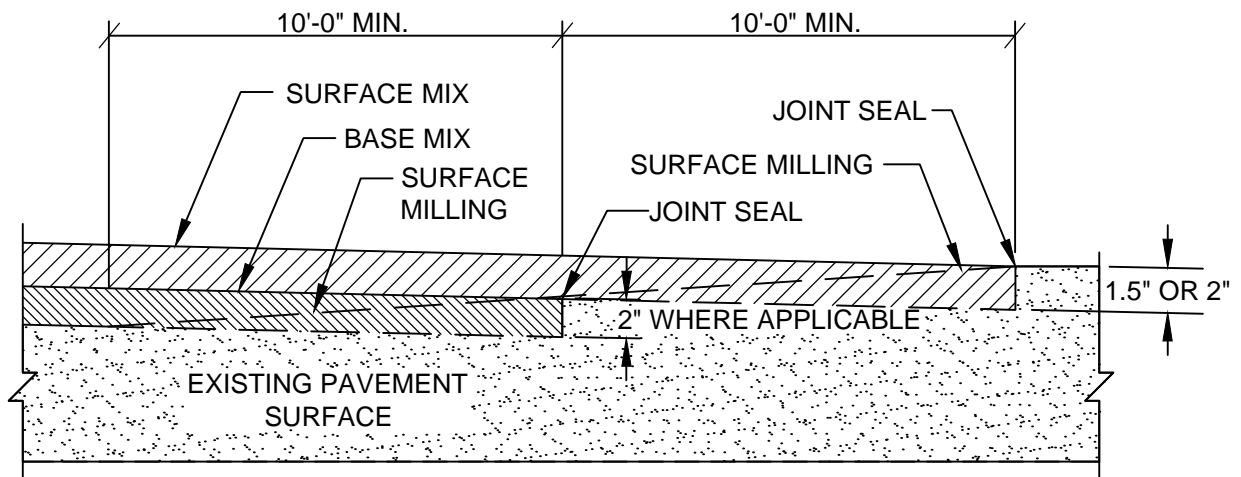
Attachment No. 2

STANDARD PLATES

TABLE OF CONTENTS

Plate Numbers

Roadway Tie-In Detail.....	503
Full Depth Patch Detail.....	504
Partial Depth Patch Detail.....	505
Flagging Operation / 2-Lane, 2-Way Equal or Less Than 40 MPH.....	MD104.02-10
Intersection Flagging Operation / 2-Lane, 2-Way Equal or Less Than 40 MPH.....	MD104.02-14



NOT TO SCALE



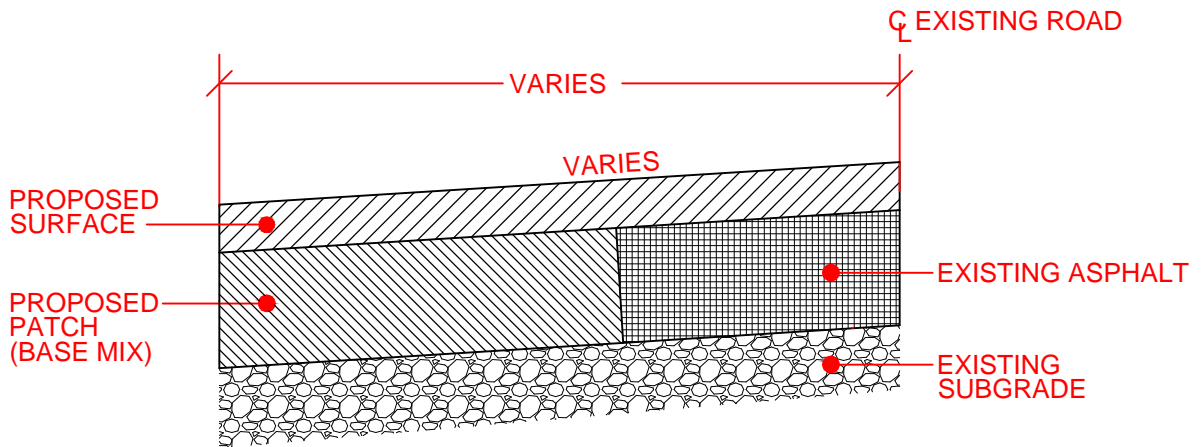
DIVISION OF PUBLIC WORKS
WASHINGTON COUNTY, MARYLAND

ENGINEERING & CONSTRUCTION
 Washington County Administrative Annex Building
 80 West Baltimore Street, Hagerstown, MD 21740
 Phone: (240) 313-2400 Fax: (240) 313-2401

REVISIONS

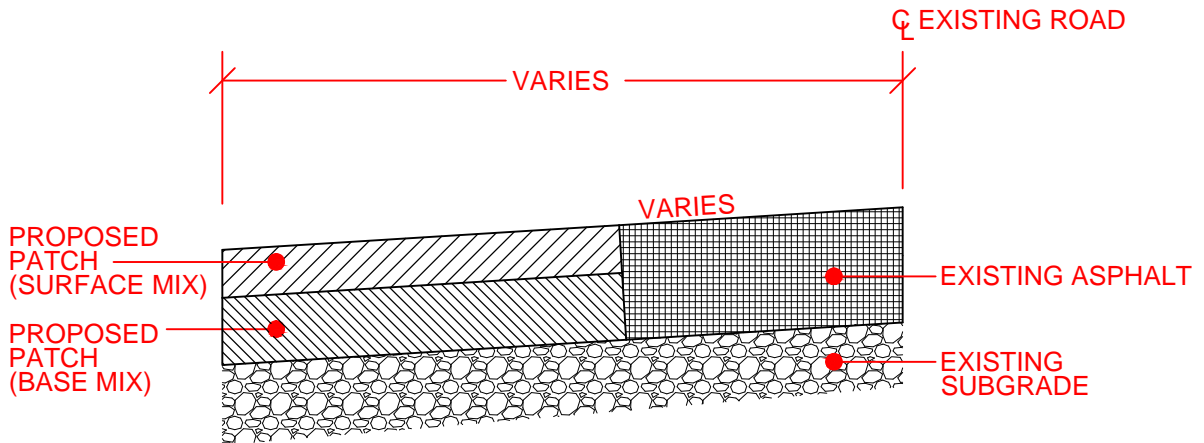
**ROADWAY TIE-IN
 DETAIL**

STD. PLATE NO. 503



FULL DEPTH PATCH (FDP) w/ BASE MIX
N.T.S.

FDP WITH BASE MIX SHALL CONSIST OF THE REMOVAL OF SPECIFIED AREAS OF THE FULL THICKNESS OF THE EXISTING ASPHALT PAVEMENT SECTION, TO THE TOP OF THE UNDERLYING AGGREGATE BASE MATERIAL, AND REPLACEMENT WITH HMA BASE MIX TO MATCH EXISTING HMA SURFACE. HMA OVERLAY OR CHIP SEAL SHALL FOLLOW THIS TREATMENT.



FULL DEPTH PATCH (FDP) w/ SURFACE MIX & BASE MIX
N.T.S.

FDP WITH BASE AND SURFACE MIX SHALL CONSIST OF THE REMOVAL OF SPECIFIED AREAS OF THE FULL THICKNESS OF THE EXISTING ASPHALT PAVEMENT SECTION, TO THE TOP OF THE UNDERLYING AGGREGATE BASE MATERIAL, AND REPLACEMENT WITH HMA BASE MIX UP TO 1.5 IN. OF THE EXISTING PAVEMENT SURFACE FOLLOWED BY SURFACE MIX TO MATCH EXISTING HMA SURFACE. THIS WILL SERVE AS FINAL ROAD SURFACE.

NOT TO SCALE

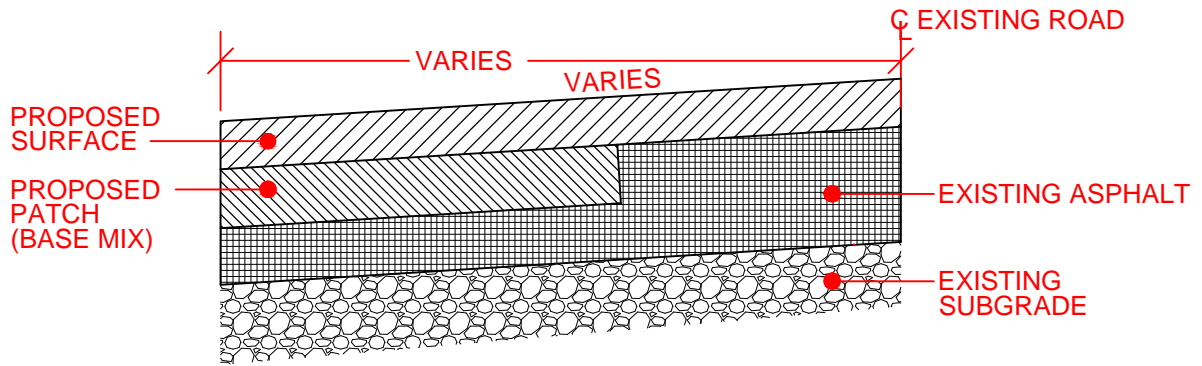


DIVISION OF PUBLIC WORKS
WASHINGTON COUNTY, MARYLAND
ENGINEERING & CONSTRUCTION
Washington County Administrative Annex Building
80 West Baltimore Street, Hagerstown, MD 21740
Phone: (240) 313-2400 Fax: (240) 313-2401

REVISIONS

FULL DEPTH PATCH
DETAIL

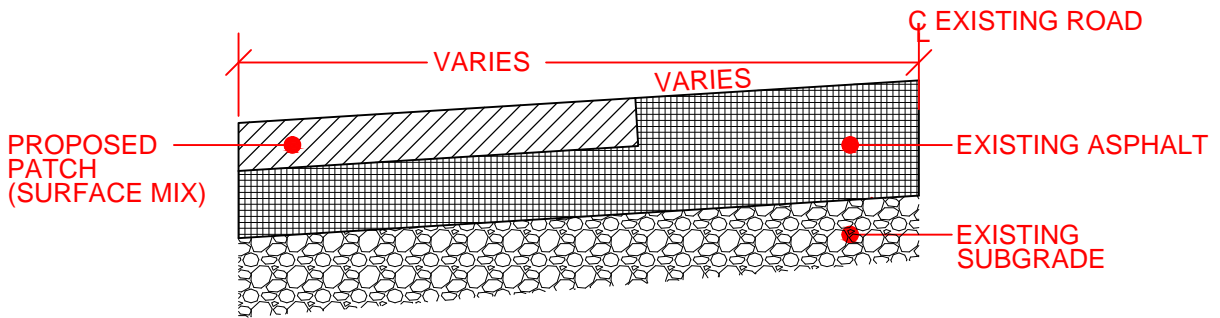
STD. PLATE NO. 504



PARTIAL DEPTH PATCH (PDP) w/ BASE MIX

N.T.S.

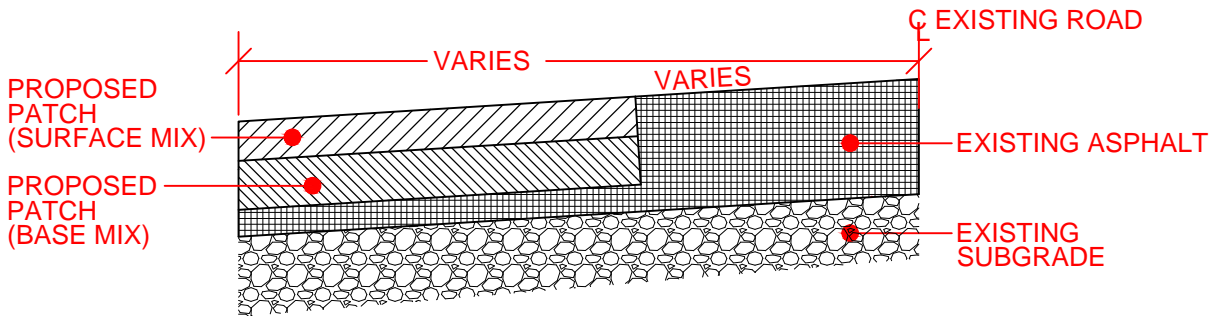
PDP WITH BASE MIX SHALL CONSIST OF THE REMOVAL OF A PORTION OF THE UNSOUND PAVEMENT IN SPECIFIED AREAS AND AND REPLACEMENT WITH HMA BASE MIX TO MATCH THE EXISTING HMA SURFACE TO REMAIN. HMA OVERLAY OR CHIP SEAL SHALL FOLLOW THIS TREATMENT.



PARTIAL DEPTH PATCH (PDP) w/ SURFACE MIX

N.T.S.

PDP WITH SURFACE MIX SHALL CONSIST OF THE REMOVAL OF A PORTION OF THE UNSOUND PAVEMENT IN SPECIFIED AREAS AND REPLACEMENT WITH HMA SURFACE MIX TO MATCH EXISTING HMA SURFACE TO REMAIN. THIS WILL SERVE AS FINAL ROAD SURFACE



PARTIAL DEPTH PATCH (PDP) w/ SURFACE MIX & BASE MIX

N.T.S.

PDP WITH BASE AND SURFACE MIX SHALL CONSIST OF THE REMOVAL OF A PORTION OF THE UNSOUND PAVEMENT IN SPECIFIED AREAS, AND REPLACEMENT WITH HMA BASE MIX UP TO 1.5 IN. OF THE EXISTING PAVEMENT SURFACE FOLLOWED BY SURFACE MIX TO MATCH EXISTING HMA SURFACE. THIS WILL SERVE AS FINAL ROAD SURFACE.

NOT TO SCALE



DIVISION OF PUBLIC WORKS
WASHINGTON COUNTY, MARYLAND
ENGINEERING & CONSTRUCTION
 Washington County Administrative Annex Building
 80 West Baltimore Street, Hagerstown, MD 21740
 Phone: (240) 313-2400 Fax: (240) 313-2401

REVISIONS

**PARTIAL DEPTH PATCH
 DETAIL**

STD. PLATE NO. 505

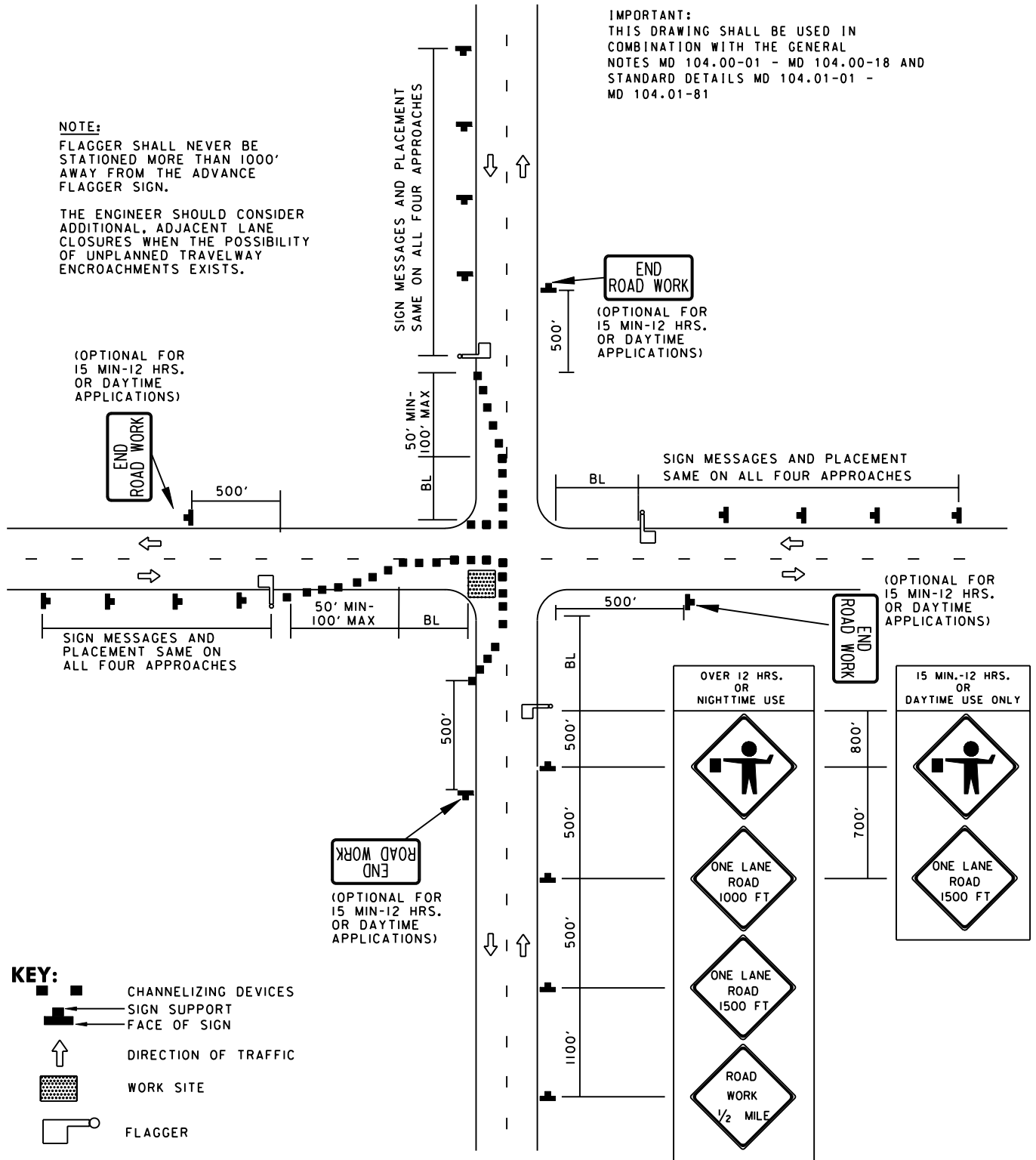
TEMPORARY TRAFFIC CONTROL TYPICAL APPLICATION

NOTE:

FLAGGER SHALL NEVER BE STATIONED MORE THAN 1000' AWAY FROM THE ADVANCE FLAGGER SIGN.

THE ENGINEER SHOULD CONSIDER ADDITIONAL, ADJACENT LANE CLOSURES WHEN THE POSSIBILITY OF UNPLANNED TRAVELWAY ENCROACHMENTS EXISTS.

IMPORTANT:
THIS DRAWING SHALL BE USED IN COMBINATION WITH THE GENERAL NOTES MD 104.00-01 - MD 104.00-18 AND STANDARD DETAILS MD 104.01-01 - MD 104.01-81



KEY:

- CHANNELIZING DEVICES
- SIGN SUPPORT
- FACE OF SIGN
- DIRECTION OF TRAFFIC
- WORK SITE
- FLAGGER

SPECIFICATION 104	CATEGORY CODE ITEMS	
APPROVED	DIRECTOR - OFFICE OF TRAFFIC AND SAFETY	
	APPROVAL • SHA REVISIONS	APPROVAL • FEDERAL HIGHWAY ADMINISTRATION
	APPROVAL 8-20-03	APPROVAL 9-23-03
	REVISED 8-11-10	REVISED 7-29-10
	REVISED	REVISED

Maryland Department of Transportation
STATE HIGHWAY ADMINISTRATION
STANDARDS FOR HIGHWAYS AND INCIDENTAL STRUCTURES
INTERSECTION FLAGGING OPERATION
2-LANE, 2-WAY EQL/LESS THAN 40 MPH

STANDARD NO.

MD 104.02-14