

FULL DEPTH SAW CUT FOR PAVEMENT REMOVAL. FOLLOW FULL DEPTH PATCH RESTORATION DETAIL IN ATTACHMENT 2.

**EX. 5' INLET**  
**B.L. CONSTR.**  
**STA 3+95.78, 12.89' L**  
**TOP ELEV.=562.45'**

**EX. I-1**

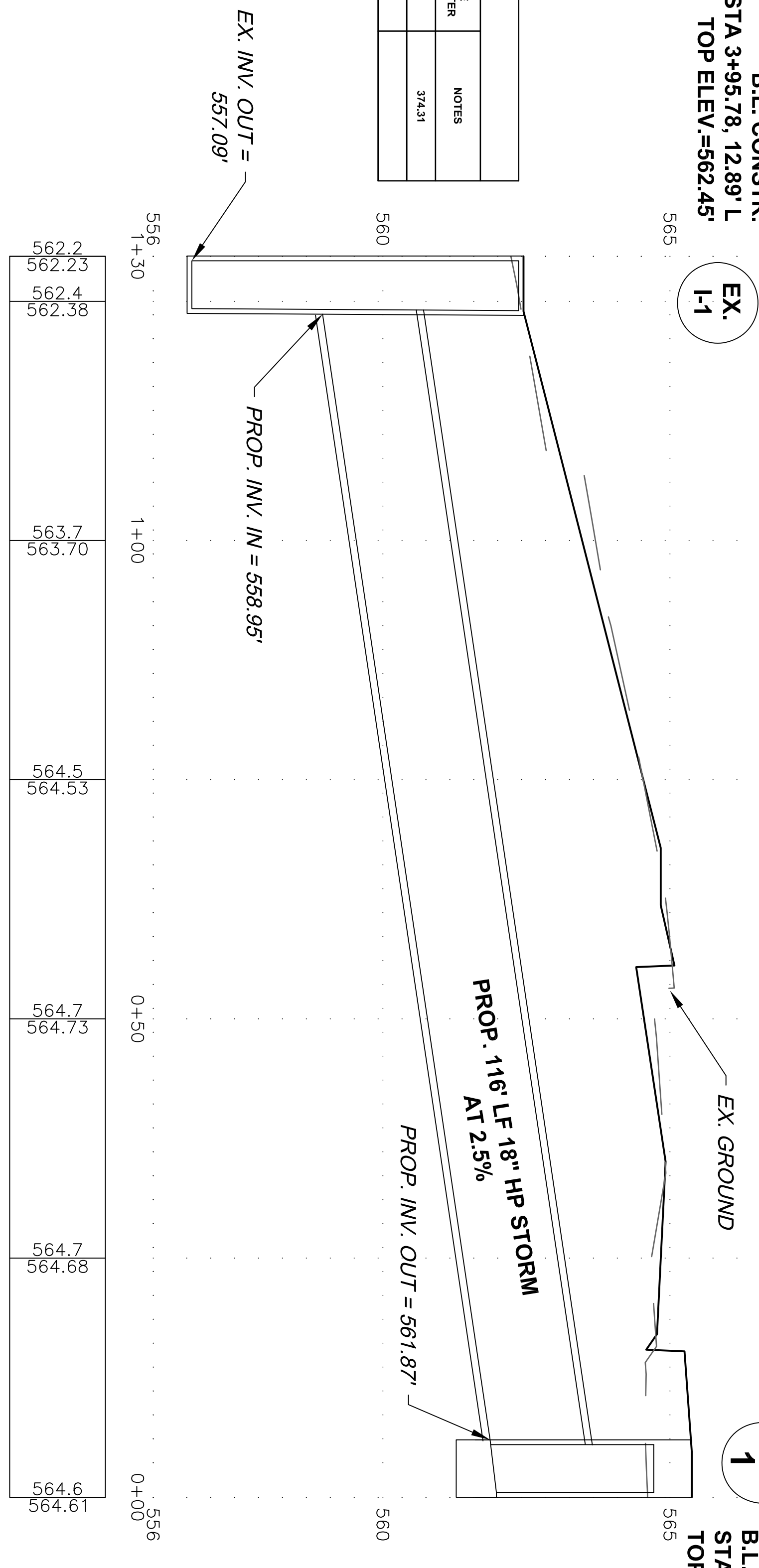
PROFILE VIEW OF WC (2)

**1**

**PROP. 5' STANDARD COG INLET**  
**SHA STD NO. 374.31**  
**B.L. CONSTR.**  
**STA 5+18.98, 20.96' L**  
**TOP ELEV.=562.45'**

**TABLE 1 - INLETS**

INLET NO.	LOCATION	OPENING	ELEVATIO	INVERT IN	INVERT OUT	PIPE DIAMETER	NOTES
I-1	STA 5+18.98 OFFSET 20.96 LEFT	CURB	562.45	-	561.87	18"	374.31
EX-1	STA 3+95.78 OFFSET 12.89 RIGHT	COMB.	562.45	568.95	567.09	18"	



<p><b>UNDERPASS WAY SIDEWALK EXTENSION</b></p> <p><b>STORM DRAIN PROFILE</b></p>	<p><b>WASHINGTON COUNTY, MARYLAND</b>          DIVISION OF ENGINEERING</p> <p>Washington County Administrative Annex, Building          80 W. Baltimore St., Hagerstown, MD 21740          Phone: 240-313-2460 Fax: 240-313-2401</p>	DESIGNED BY:	NO.	REVISION DESCRIPTION	BY	DATE
		MM/PM				
		DRAWN BY:				
		MM				
		CHECKED BY:				
		MM/PM				
		DATE:				
		7-29-19				

SCALE	1"=10' H, 1"=30' V, 1"=5'
SHEET NO.	1 OF 1
PROJECT NO.	28-271